

Panasonic[®]

MEASUREMENT SENSOR

HL-G1

Easy Setup Guide

Table of Contents

1	Hardware	3
2	Download Software	4
3	Wire The Hardware	7
4	Install the GT Driver	9
5	Install Software for the GT Touch Terminal	12
5.1	Use Computer Management to Find COM Port.....	15
6	Install PC Software	16
7	Basic Settings in the PC Software HL-G1SMI	20
8	Wiring the Components	22
9	Operation	23
9.1	Using the HL-G1 Sensor and GT Touch Terminal.....	23
9.2	Using the HL-G1 Sensor, GT Touch Terminal and PC Software	24

10 Questions? 25

1 Hardware

The HL-G1xx-S-J and GT touch terminal have arrived.



Please have a USB-to-Mini-USB cable ready to connect the GT touch terminal to the PC.



2 Download Software

Please find the application software on our home page
<http://www.panasonic-electric-works.com/peweu/de/html/27143.php>:



◆ Procedure

1. Click the download symbol next to the software desired (HL-G1 GTxx software, HL-G1 setting software).




[HOME](#) / [IHR PANASONIC ELECTRIC WORKS](#) / [DOWNLOADS BY PRODUCT NAME](#) / [SENSORS](#) / [HL-G1](#)

HL-G1

Manuals

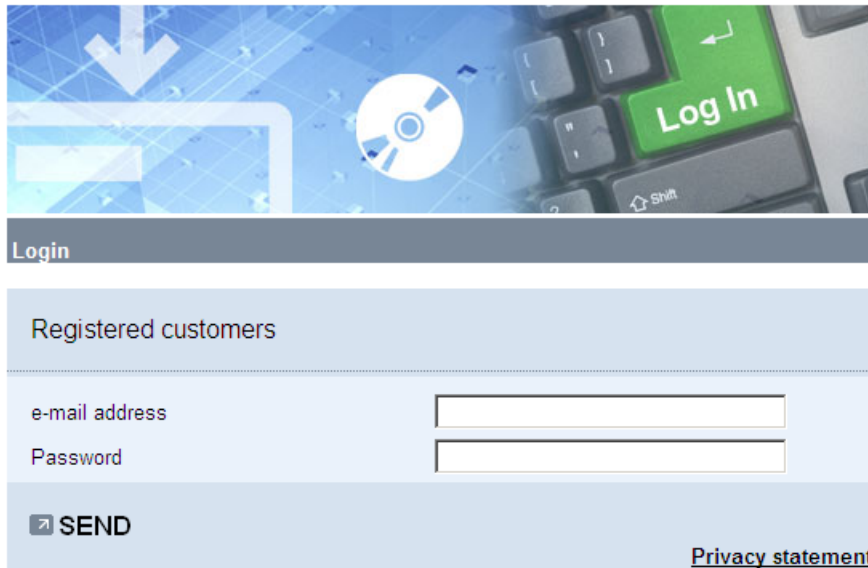
Product number	Description	Language	Release date	Download
ME-HLG1 (00)	HL-G1 Series User's Manual	EN	10/2010	 (1.97MB)
ME-HLG1DP (00)	HL-G1 Series User's Manual (Console Version)	EN	10/2010	 (1.02MB)
	HL-G1 User's Manual, Compact Laser Displacement Sensor (Console-dedicated Version)	EN	10/2010	 (1.02MB)
	HL-G1 User's Manual, Compact Laser Displacement Sensor	EN	10/2010	 (1.97MB)

Software

Product number	Description	Language	Release date	Download
	HL-G1 GT02 software		2/24/2011	 (5.84MB)
	HL-G1 GT12 software		2/24/2011	 (6.24MB)
	HL-G1 PC setting software		2/24/2011	 (22.27MB)

You are directed to our password-protected area.

Login

The image shows a login form with a header banner featuring a blue background with a white arrow pointing down, a CD icon, and a keyboard with a green 'Log In' key. Below the banner is a dark grey bar with the word 'Login' in white. The main form area is light blue and contains the text 'Registered customers' followed by two input fields for 'e-mail address' and 'Password'. A 'SEND' button with a right-pointing arrow is located below the fields. A link for 'Privacy statement' is in the bottom right corner.

Login

Registered customers

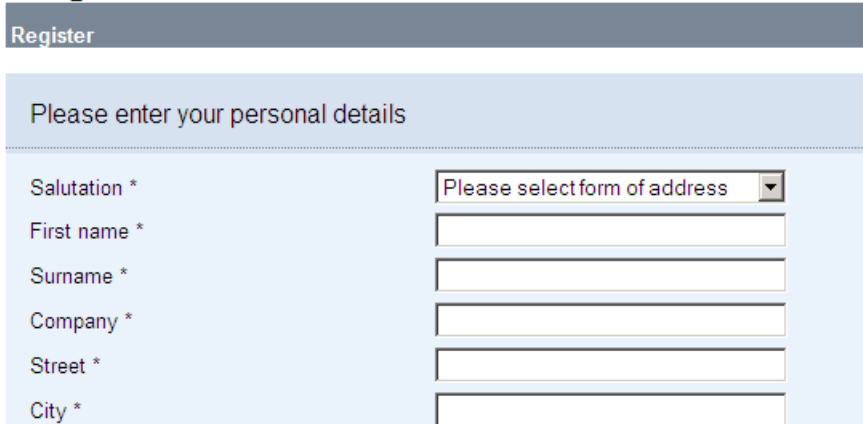
e-mail address

Password

[Privacy statement](#)

2. If already registered, enter your e-mail address and password
or
Register as a new customer.

Register

The image shows a registration form with a dark grey header bar containing the word 'Register' in white. Below the header is a light blue section with the text 'Please enter your personal details'. The form contains several input fields: a dropdown menu for 'Salutation *' with the text 'Please select form of address', and text boxes for 'First name *', 'Surname *', 'Company *', 'Street *', and 'City *'.

Register

Please enter your personal details

Salutation *

First name *

Surname *

Company *

Street *

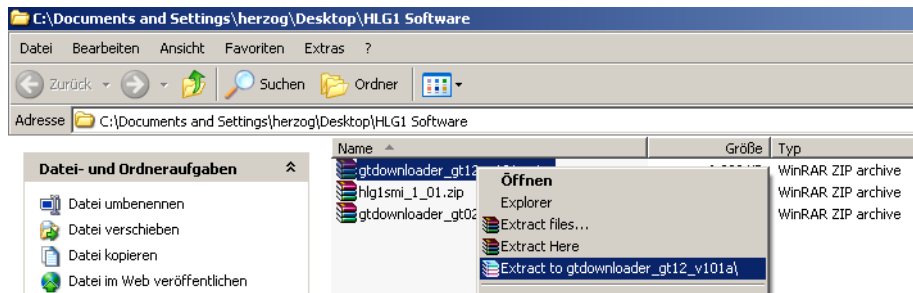
City *

Fill out the online form to profit from this free service for members.

3. After registering, call up the desired software files
<http://www.panasonic-electric-works.com/peweu/de/html/27143.php> again.

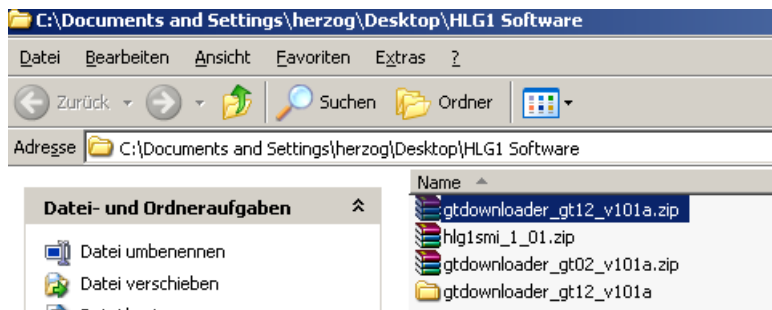
4. Save all files required in one folder.

Remember the folder when it comes time to install the GT driver (see "Install the GT Driver" on page 9).



5. Unpack the ZIP file.

A new subfolder is created with the same name as the ZIP file.



6. Repeat this step for all zipped files.

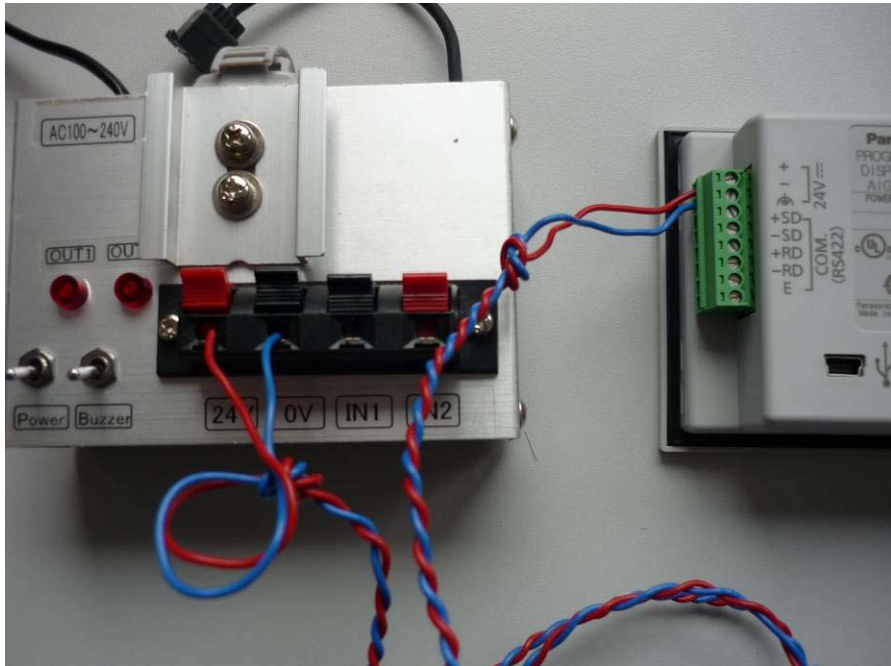
3 Wire The Hardware

Before you can install software on your GT touch terminal, you have to connect it.

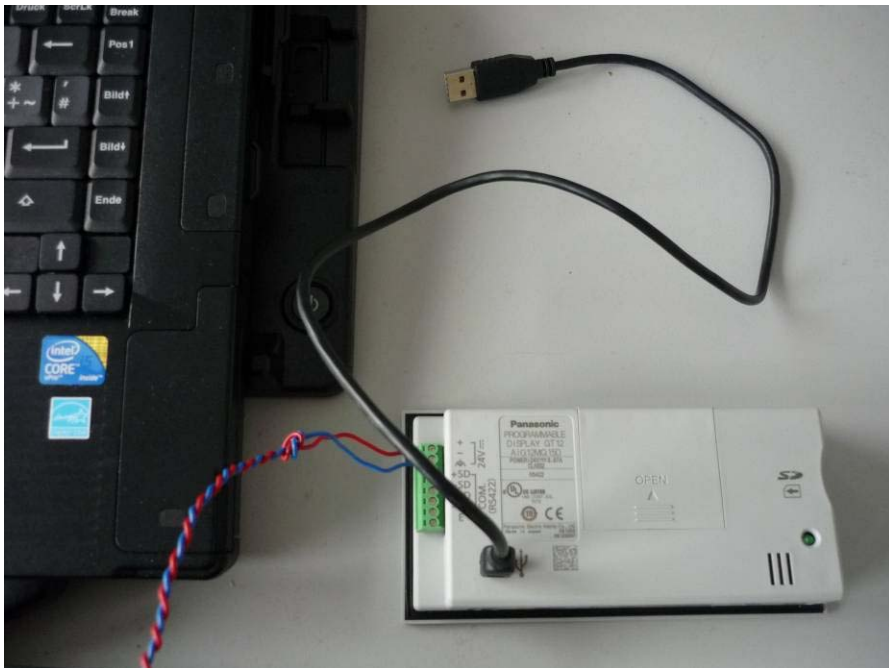


◆ Procedure

1. Connect the GT touch terminal to the terminals +24V and 0V.



2. Connect the GT touch terminal to your PC using a USB-to-Mini-USB cable.



3. Turn on the power.

The GT touch terminal boots. After a few seconds, the screen displays the following:

No Screen data

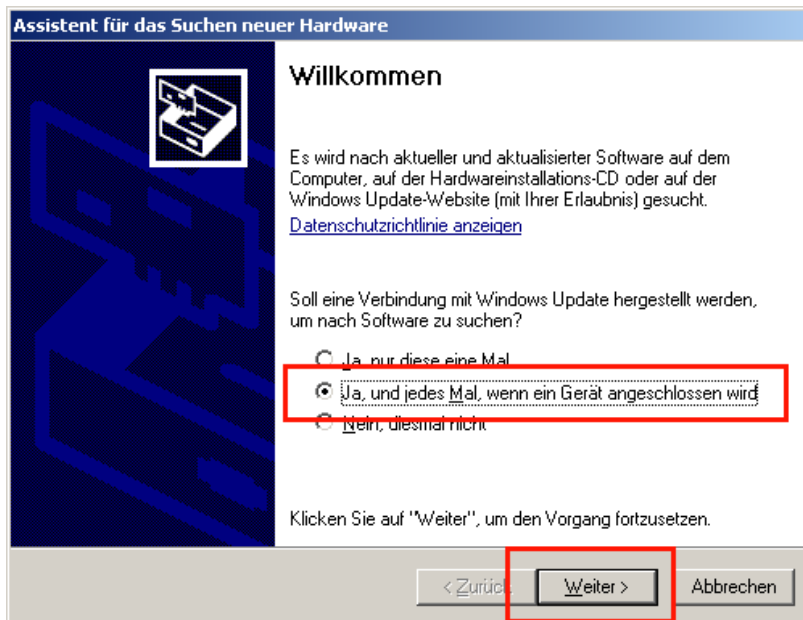
4 Install the GT Driver

Your PC will find new hardware and launch the Hardware Assistant.

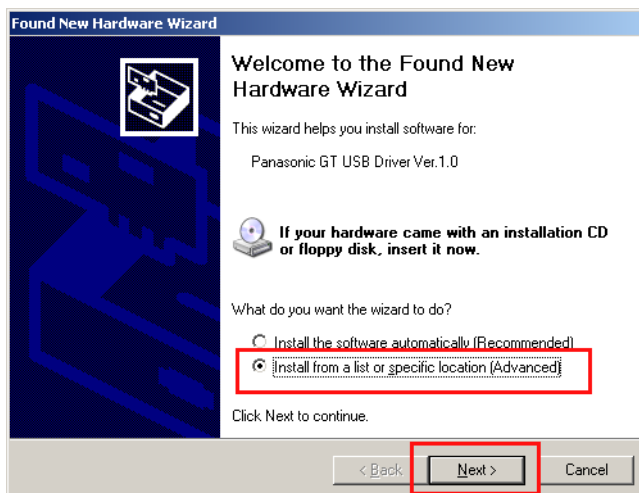


◆ Procedure

1. If this dialog appears, select "Ask me to search Windows every time I connect a new device." Select [Next].

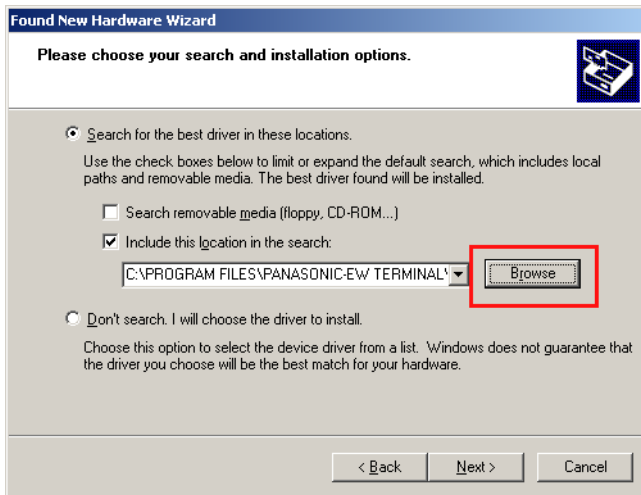


2. Select the option button "Install from a list or specific location (Advanced)." Select [Next].

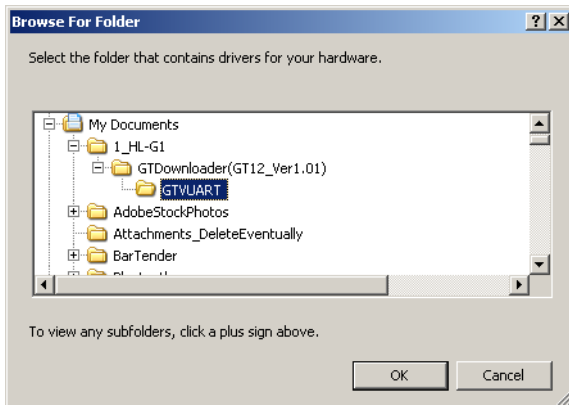


3. Search your PC for the folder, in which you saved the software you

downloaded (see "Download Software" on page 4).

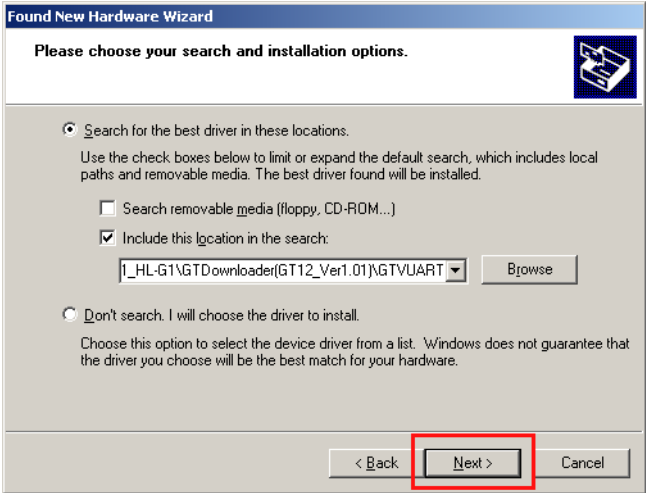


4. Browse to the folder "GTVUART".



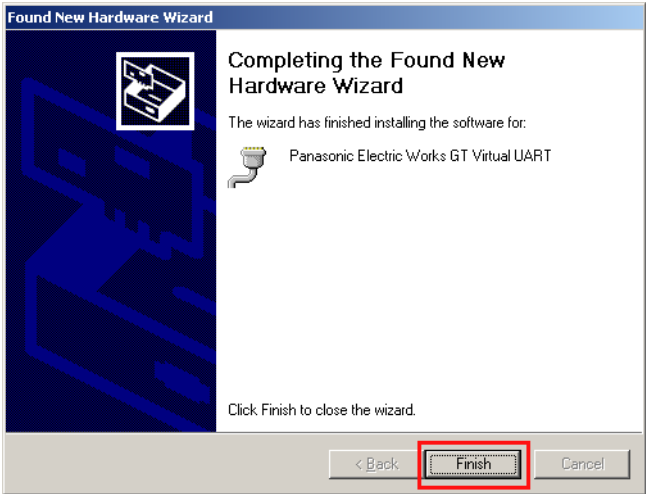
5. Select [OK].

6. Select [Next].



The software installation process begins.

7. When the software has been installed, click [Finish].

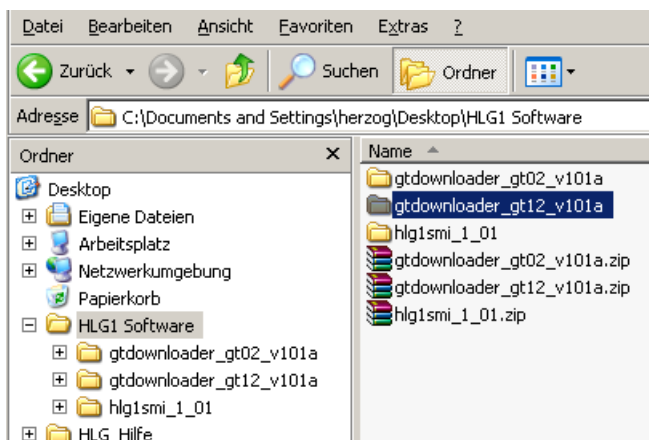


5 Install Software for the GT Touch Terminal

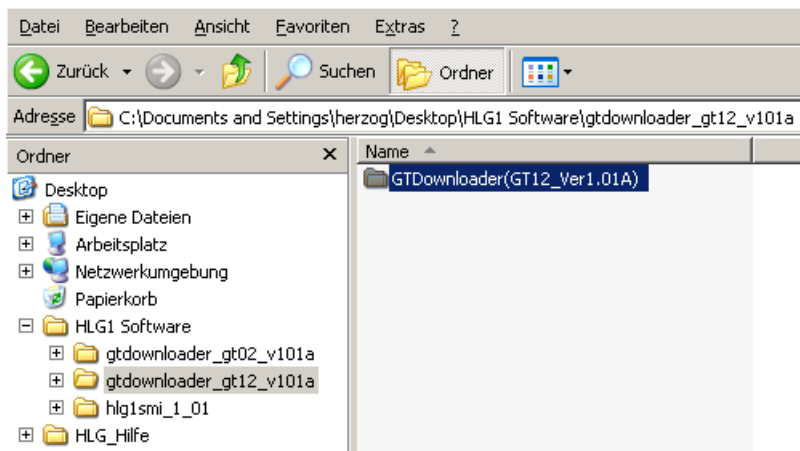


Procedure

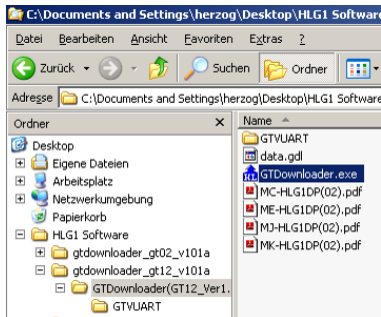
1. Go to the folder where you saved the software when you downloaded it (see "Download Software" on page 4).
2. Open the folder "GTdownloader_gt_xx_xxx".



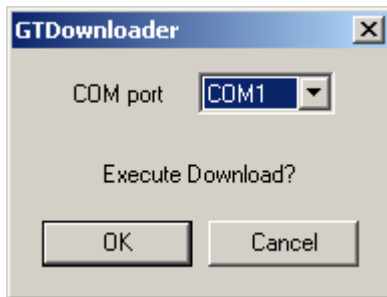
3. Open the folder "GTDownloader".



4. "Double-click "GTDownloader.exe" .

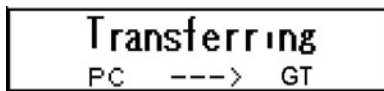


The dialog "GTDownloader" opens.

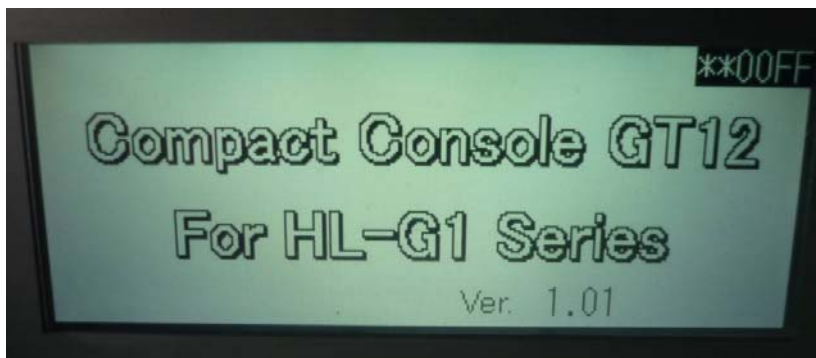


5. Determine which COM port the GT touch terminal uses (see "Use Computer Management to Find COM Port" on page 15).
6. Select the correct COM port.
7. Select [OK].

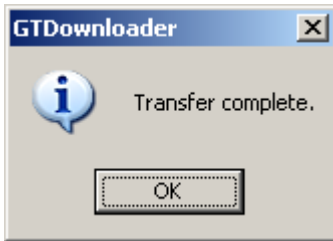
Data transfer begins. **Do not break the connection!**



After a time, the following display appears:



8. Click [OK] after the software has been successfully installed on your GT touch terminal.



9. Turn off the power.

The HL-G1 can now be connected to the GT touch terminal.

And now?

- You wish to use the sensor and GT touch terminal (see "Using the HL-G1 Sensor and GT Touch Terminal" on page 23).
- You also wish to install the PC software HL-G1SMI (see "Install PC Software" on page 16).

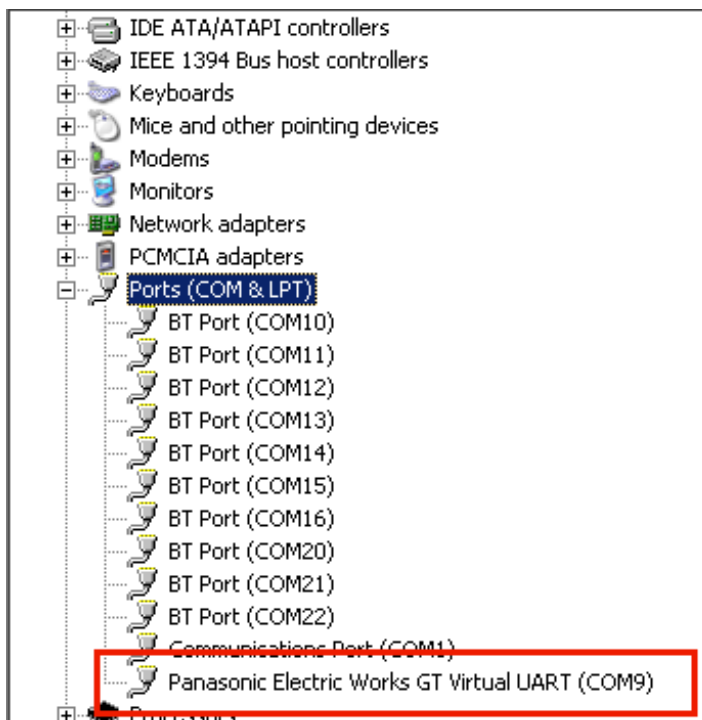
5.1 Use Computer Management to Find COM Port



◆ Procedure

1. Open Computer Management, e.g. via System Control: System → Hardware → Computer Management.
2. Click "Ports (COM & LPT)".

The Panasonic GT touch terminal is shown.



3. Remember the COM port, e.g. COM9.

6 Install PC Software

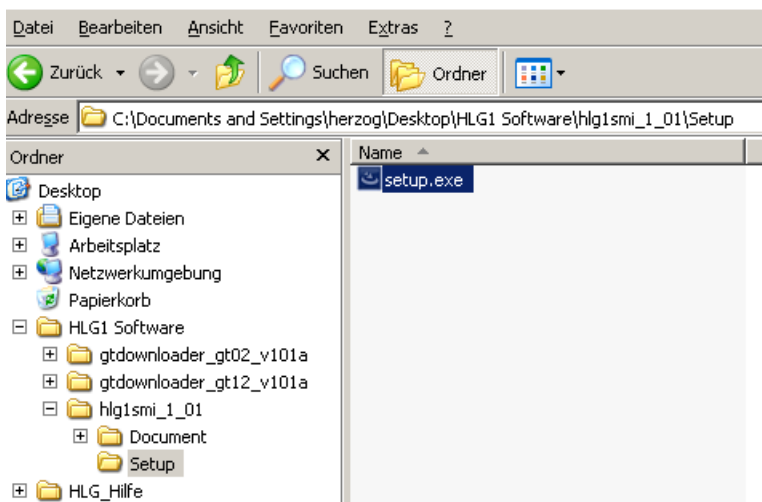
The following operating systems are supported:

- Microsoft Windows® XP Professional 32 bits (SP2) or later
- Microsoft Windows® Vista Business 32 bits
- Microsoft Windows® 7 Professional 32 bits



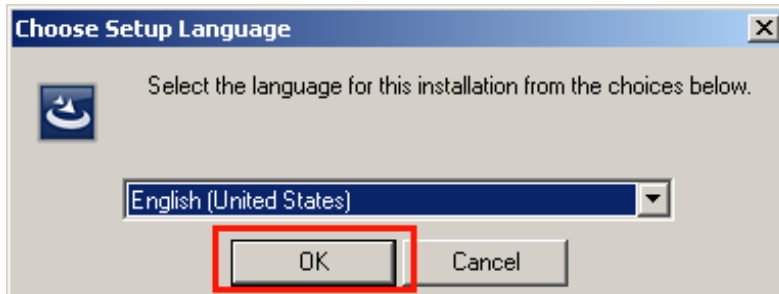
◆ Procedure

1. **Search your PC for the folder, in which you saved the software you downloaded (see "Download Software" on page 4).**
2. **Open the folder "hlg1smi_1_01\Setup" and double-click "Setup.exe".**

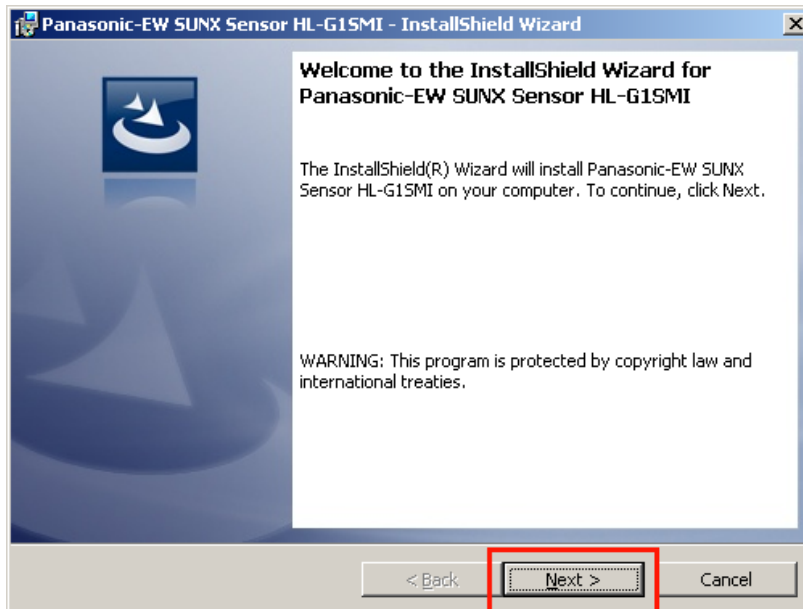


3. **Select the desired language.**

4. Select [OK].

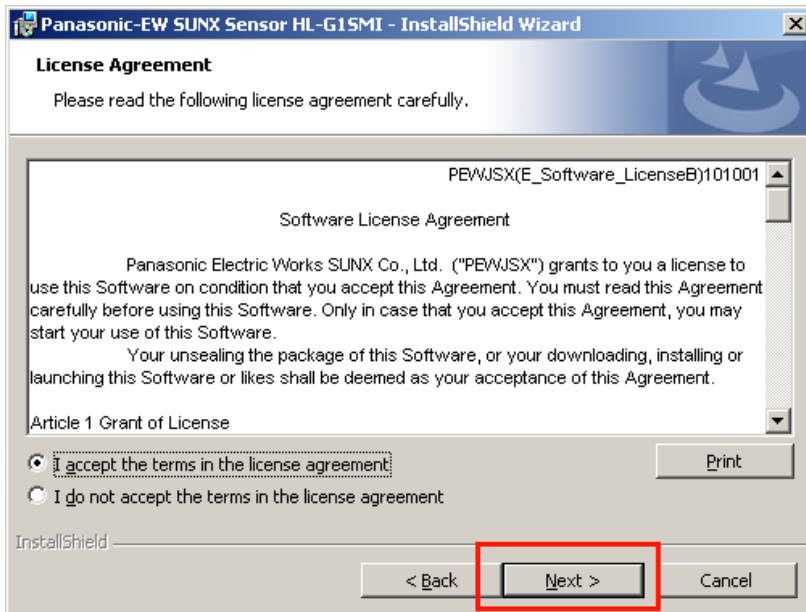


The HL-G1SMI installation assistant opens.

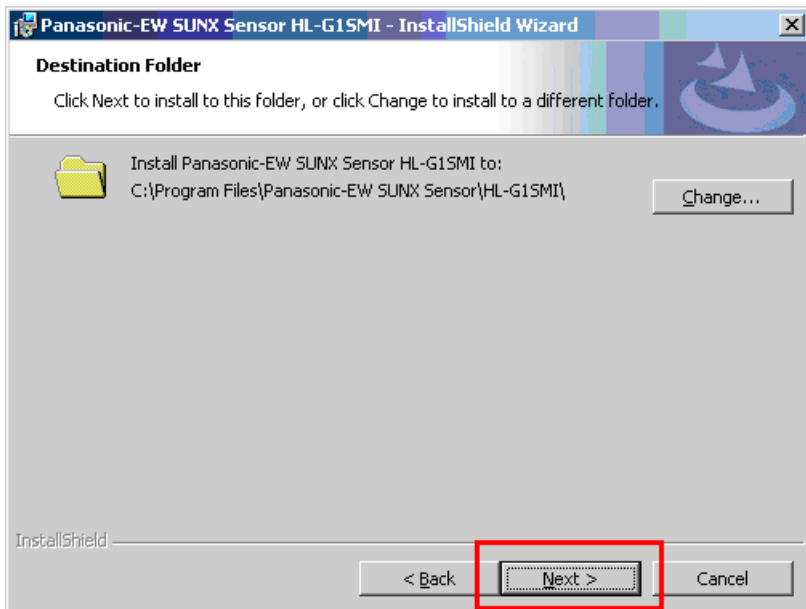


5. Select [Next].

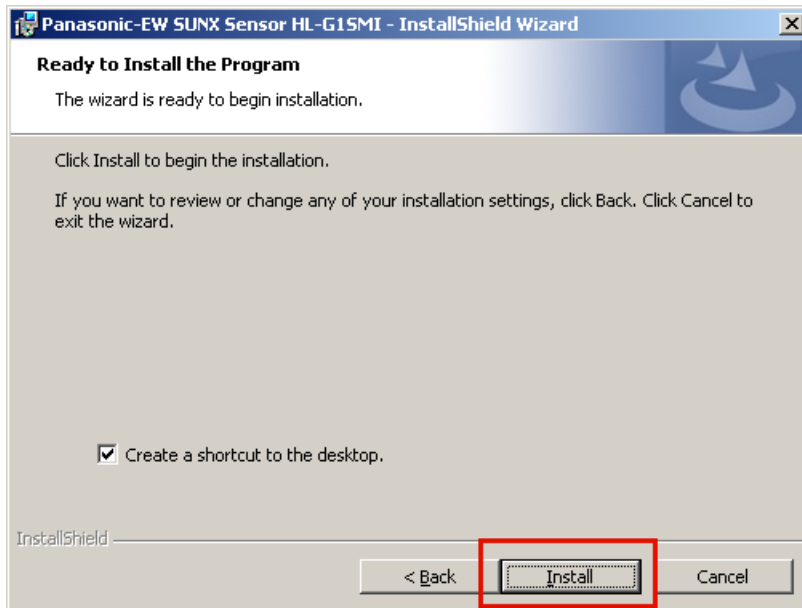
6. Accept the license terms (License Agreement).



7. Select [Next].



8. Select [Next].

9. Select [Next].

The installation begins.

10. When the installation has been finished, click [Finish].

The PC software HL-G1SMI has been installed and can be opened via the icon on the desktop.



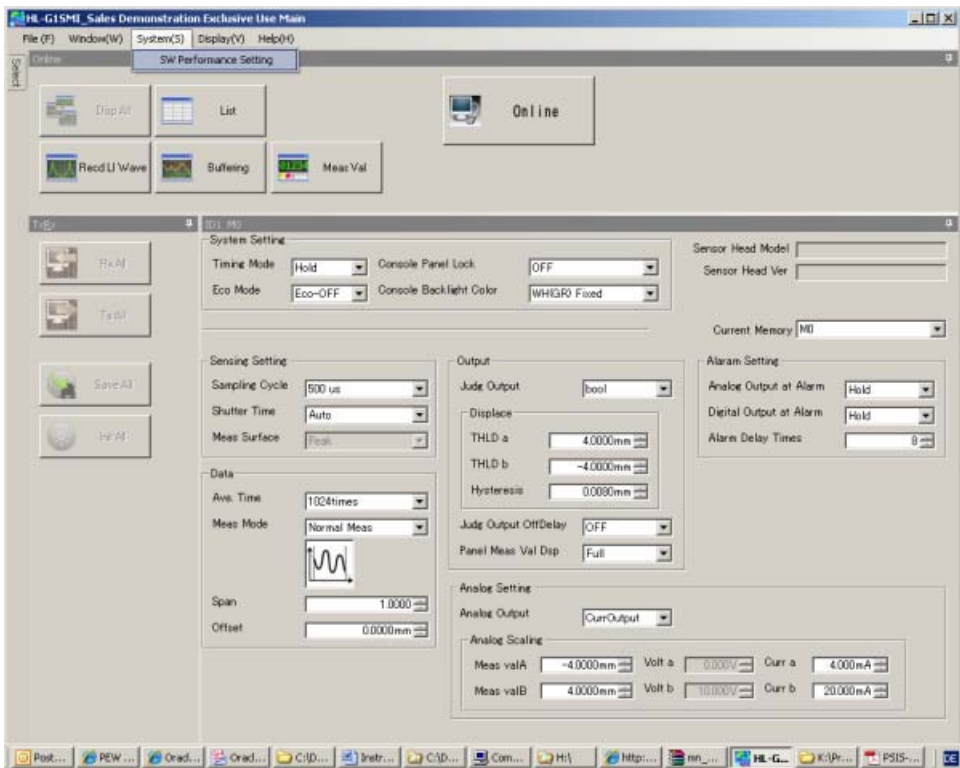
7 Basic Settings in the PC Software HL-G1SMI

The main dialog is displayed when the software is opened.

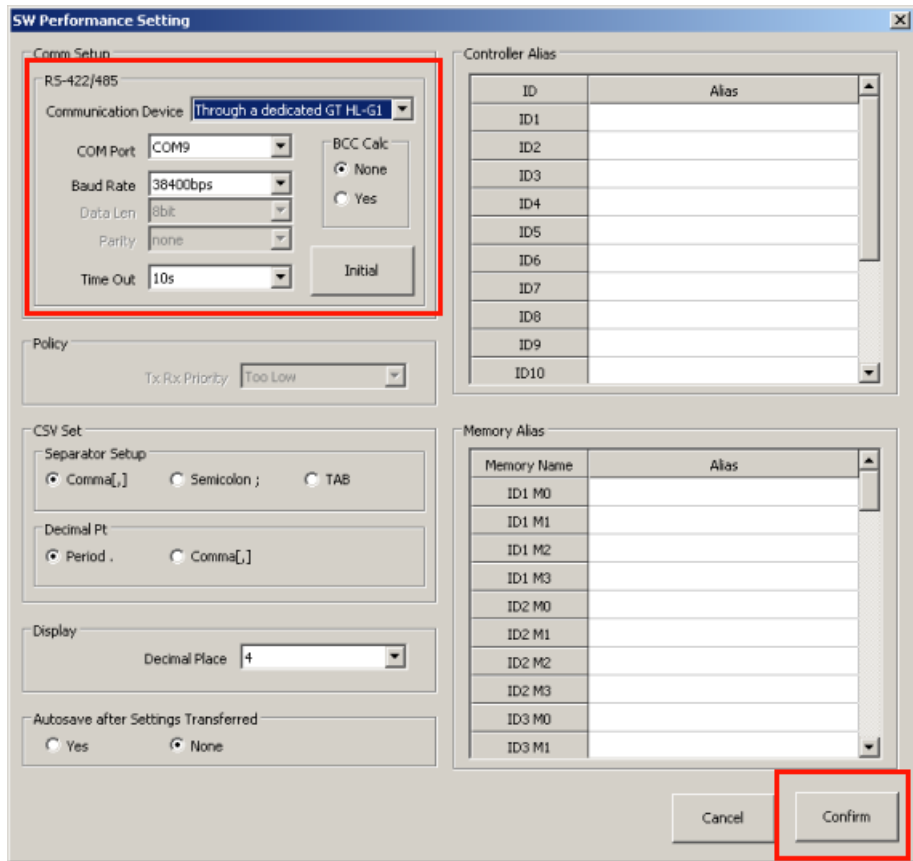


◆ Procedure

1. System(S) → SW Performance Setting



The dialog "SW Performance Setting" opens.



2. Select the following settings:

Parameter	Setting
Communication Device	Through a dedicated GT HL-G1
COM port	As determined by Computer Management (see "Use Computer Management to Find COM Port" on page 15)
Baud Rate	38400 bps
Time Out	10s

3. Select [Next].

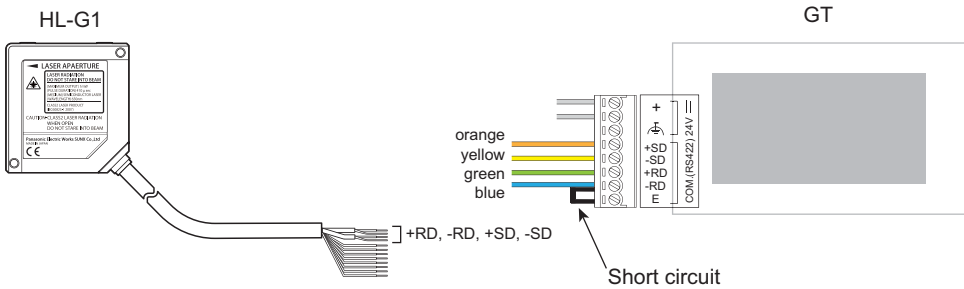
The dialog closes and you return to the main dialog. The software can now be used with the HL-G1 sensor.

8 Wiring the Components



◆ Procedure

1. Turn off the power.
2. Connect the sensor to the power supply directly on the GT touch terminal.
3. Connect the sensor via RS422 with the GT touch terminal as illustrated below.
4. In addition, short -RD and E.



◆ NOTE

- Be sure that none of the unused, open wire ends are short-circuited.
- Setting: "Terminating resistor ON".

9 Operation

9.1 Using the HL-G1 Sensor and GT Touch Terminal



◆ Procedure

- 1. Turn on the power.**

The GT touch terminal boots. The measurement sensor HL-G1 begins emitting its laser beam.
- 2. Aim the laser beam at a test object with the sensing range.**

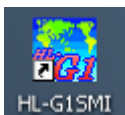
The GT touch terminal displays the same measurement value as the sensor's display.

9.2 Using the HL-G1 Sensor, GT Touch Terminal and PC Software



◆ Procedure

1. Make sure that the GT touch terminal is connected to the PC, that the software is installed completely and that the basic settings have been made according to the directions provided in this manual .
2. Turn on the power.
3. Open the software HL-G1SMI by using the desktop icon, for example.



4. Click [Online].

If online appears in red, your new HL-G1 sensor has been successfully put into operation and the sensor is online.

10 Questions?

If everything does not function as described, call us at: +49 8024 648 737.

North America | **Europe** | **Asia Pacific** | **China** | **Japan**

Panasonic Electric Works Global Sales Companies

Europe		
▶ Headquarters	Panasonic Electric Works Europe AG	Rudolf-Diesel-Ring 2, 83607 Holzkirchen, Tel. +49 (0) 8024 648-0, Fax +49 (0) 8024 648-111, www.panasonic-electric-works.com
▶ Austria	Panasonic Electric Works Austria GmbH PEW Electronic Materials Europe GmbH	Rep. of PEWDE, Josef Madersperger Str. 2, 2362 Biedermannsdorf, Tel. +43 (0) 2236-26846, Fax +43 (0) 2236-46133, www.panasonic-electric-works.at Ennshafenstraße 30, 4470 Enns, Tel. +43 (0) 7223 883, Fax +43 (0) 7223 88333, www.panasonic-electronic-materials.com
▶ Benelux	Panasonic Electric Works Sales Western Europe B.V.	De Rijn 4, (Postbus 211), 5684 PJ Best, (5680 AE Best), Netherlands, Tel. +31 (0) 499 372727, Fax +31 (0) 499 372185, www.panasonic-electric-works.nl
▶ Czech Republic	Panasonic Electric Works Czech s.r.o.	Prumtyslová 1, 34815 Planá, Tel. (+420)-374799990, Fax (+420)-374799999, www.panasonic-electric-works.cz
▶ France	Panasonic Electric Works Sales Western Europe B.V.	Succursale française, 10, rue des petits nuisseaux, 91371 Verrières le Buisson, Tél. +33 (0) 1 6013 5757, Fax +33 (0) 1 6013 5758, www.panasonic-electric-works.fr
▶ Germany	Panasonic Electric Works Europe AG	Rudolf-Diesel-Ring 2, 83607 Holzkirchen, Tel. +49 (0) 8024 648-0, Fax +49 (0) 8024 648-111 www.panasonic-electric-works.de
▶ Hungary	Panasonic Electric Works Europe AG	Magyarország Közvetlen Kereskedelmi Képviselet, 1117 Budapest, Neumann János u. 1., Tel. +36(0)1482 9258, Fax +36 (0) 1482 9259, www.panasonic-electric-works.hu
▶ Ireland	Panasonic Electric Works UK Ltd.	Dublin, Tel. +353 (0) 14600969, Fax +353 (0) 14601131, www.panasonic-electric-works.co.uk
▶ Italy	Panasonic Electric Works Italia s.r.l.	Via del Commercio 3-5 (Z.I. Ferlina), 37012 Bussolengo (VR), Tel. +39 (0) 456752711, Fax +39 (0) 456700444, www.panasonic-electric-works.it
▶ Nordic Countries	Panasonic Electric Works Nordic AB PEW Fire & Security Technology Europe AB	Knararnäsgatan 15, 16440 Kista, Sweden, Tel. +46 859476680, Fax +46 859476690, www.panasonic-electric-works.se Jungmansgatan 12, 21119 Malmö, Tel. +46 40697-7000, Fax +46 40697-7099, www.panasonic-fire-security.com
▶ Poland	Panasonic Electric Works Polska sp. z o.o.	Al. Krakowska 4/6, 02-284 Warszawa, Tel. +48 (0) 22 338-11-33, Fax +48 (0) 22 338-12-00, www.panasonic-electric-works.pl
▶ Portugal	Panasonic Electric Works España S.A.	Portuguese Branch Office, Avda Adelino Amaro da Costa 728 R/C J, 2750-277 Cascais, Tel. +351 214812520, Fax +351 214812529
▶ Spain	Panasonic Electric Works España S.A.	Barajas Park, San Severo 20, 28042 Madrid, Tel. +34 913293875, Fax +34 913292976, www.panasonic-electric-works.es
▶ Switzerland	Panasonic Electric Works Schweiz AG	Grundstrasse 8, 6343 Rotkreuz, Tel. +41 (0) 417997050, Fax +41 (0) 417997055, www.panasonic-electric-works.ch
▶ United Kingdom	Panasonic Electric Works UK Ltd.	Sunrise Parkway, Linford Wood, Milton Keynes, MK14 6LF, Tel. +44(0) 1908 231555, +44(0) 1908 231599, www.panasonic-electric-works.co.uk
North & South America		
▶ USA	PEW Corporation of America	629 Central Avenue, New Providence, N.J. 07974, Tel. +1-908-464-3550, Fax +1-908-464-8513, www.pewa.panasonic.com
Asia Pacific/China/Japan		
▶ China	Panasonic Electric Works (China) Co., Ltd.	Level 2, Tower W3, The Tower Oriental Plaza, No. 2, East Chang An Ave., Dong Cheng District, Beijing 100738, Tel. (010) 5925-5988, Fax (010) 5925-5973, www.pewc.panasonic.cn
▶ Hong Kong	Panasonic Electric Works (Hong Kong) Co., Ltd.	RM1205-9, 12/F, Tower 2, The Gateway, 25 Canton Road, Tsimshatsui, Kowloon, Hong Kong, Tel. (8520) 2956-3118, Fax (0852) 2956-0398
▶ Japan	Panasonic Electric Works Co., Ltd.	1048 Kadoma, Kadoma-shi, Osaka 571-8686, Japan, Tel. (06)-6908-1050, Fax (06)-6908-5781 http://panasonic-electric-works.net
▶ Singapore	Panasonic Electric Works Asia Pacific Pte. Ltd.	101 Thomson Road, #25-03/05, United Square, Singapore 307591, Tel. (06255)-5473, Fax (06253)-5689