

# AZ2150W

## 30 AMP MINIATURE POWER RELAY

### FEATURES

- 1.75 mm contact gap
- DC coils up to 48V
- High dielectric strength version available
- All plastics PTI 250
- Epoxy sealed versions available
- UL Class F (155°C) standard
- UL, CUR E44211
- VDE 40023154



### CONTACTS

<b>Arrangement</b>	SPST (1 Form A)
<b>Ratings</b>	Resistive load: Max. switched power: 900 W or 8310 VA Max. switched current: 30 A Max. switched voltage: 240 VDC* or 440 VAC  * Note: If switching voltage is greater than 30 VDC, special precautions must be taken. Please contact the factory.
<b>UL, CUR</b>	30 A at 277 VAC, General Use, Resistive
<b>VDE</b>	20 A at 250 VAC, AC7a
<b>Material</b>	Silver tin oxide
<b>Resistance</b>	< 50 milliohms initially

### COIL

<b>Power</b>	
<b>At Pickup Voltage (typical)</b>	500 mW
<b>Max. Continuous Dissipation</b>	1.7 W at 20°C (68°F) ambient
<b>Temperature Rise</b>	43°C (77°F) at nominal coil voltage
<b>Max. Temperature</b>	155°C (311°F)

### NOTES

1. All values at 20°C (68°F).
2. Relay may pull in with less than "Must Operate" value.
3. Specifications subject to change without notice.

### GENERAL DATA

<b>Life Expectancy</b> <b>Mechanical</b> <b>Electrical</b>	Minimum operations 2 x 10 <sup>5</sup> 3 x 10 <sup>4</sup> at 30 A 250 VAC Res.
<b>Operate Time</b>	15 msec max. at nominal coil voltage
<b>Release Time</b>	10 msec max. at nominal coil voltage (without suppression)
<b>Dielectric Strength</b> (at sea level for 1 min.)	1500 Vrms contact to contact 2500 Vrms contact to coil 3000 Vrms contact to coil "T" version
<b>Insulation Resistance</b>	1000 megohms min. at 20°C, 500 VDC 50% RH
<b>Dropout</b>	Greater than 10% of nominal coil voltage
<b>Ambient Temperature</b> <b>Operating</b> <b>Storage</b>	-40°C (-40°F) to 85°C (185°F) - DC coils -40°C (-40°F) to 105°C (221°F)
<b>Vibration</b>	0.062" (1.5 mm) DA at 10–55 Hz
<b>Shock</b>	10 g
<b>Enclosure</b>	P.B.T. polyester
<b>Terminals</b>	Tinned copper alloy, P.C.,
<b>Max. Solder Temp.</b>	270°C (518°F)
<b>Max. Solder Time</b>	5 seconds
<b>Max. Solvent Temp.</b>	80°C (176°F)
<b>Max. Immersion Time</b>	30 seconds
<b>Weight</b>	36 grams
<b>Packing unit in pcs</b>	40 per plastic tray / 280 per carton box



**AMERICAN ZETTLER, INC.**

[www.azettler.com](http://www.azettler.com)

75 COLUMBIA • ALISO VIEJO, CA 92656 • PHONE: (949) 831-5000 • FAX: (949) 831-8642 • E-MAIL: SALES@AZETTLER.COM

2/18/11

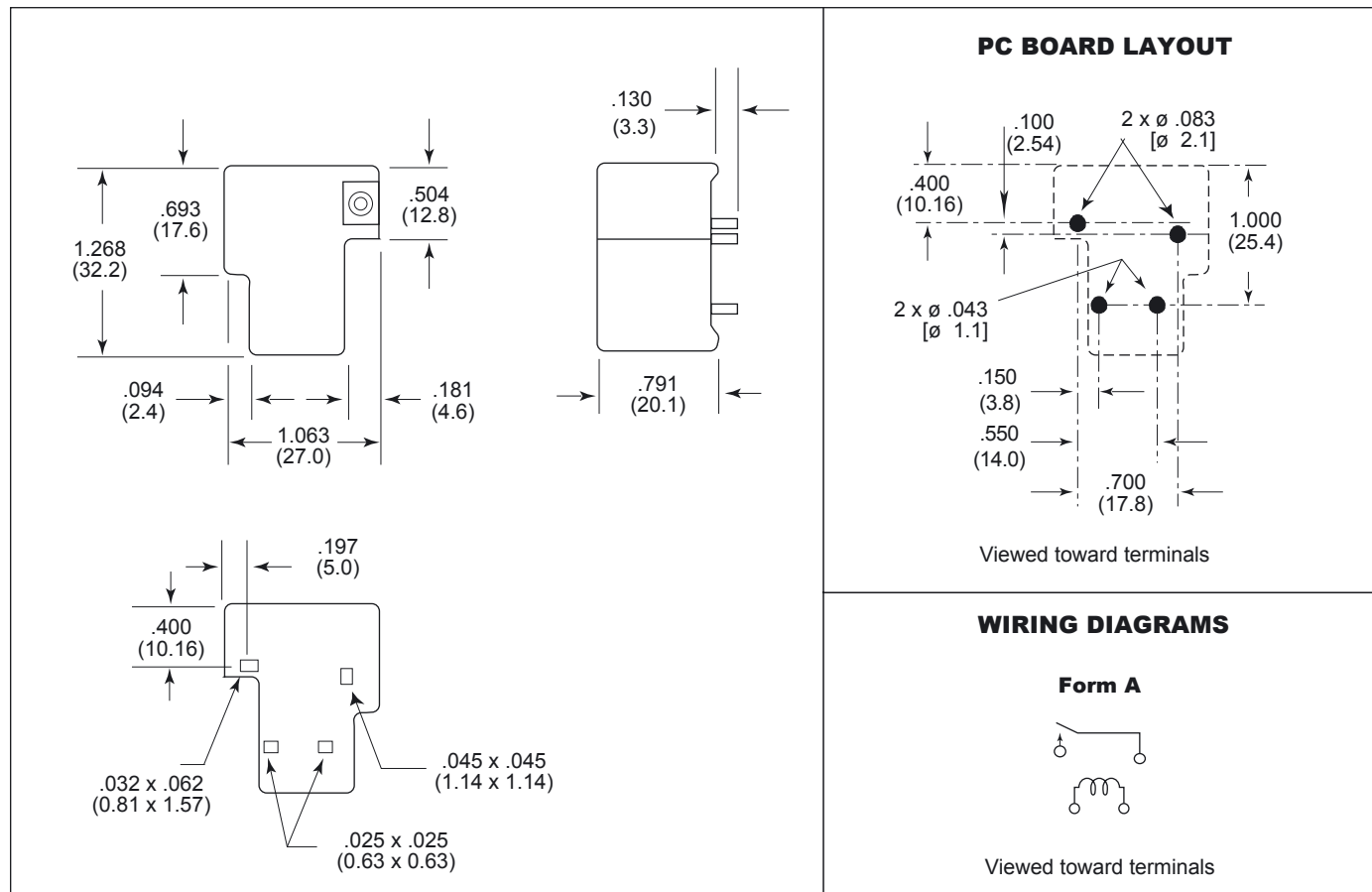
# AZ2150W

## RELAY ORDERING DATA

COIL SPECIFICATIONS – DC Coil					ORDER NUMBER*
Nominal Coil VDC	Must Operate VDC	Max. Continuous VDC	Nominal Current mA ± 10%	Coil Resistance Ohm ± 10%	
5	3.75	6.0	222	22.5	AZ2150W-1AE-5DF
6	4.50	7.2	185	32.5	AZ2150W-1AE-6DF
9	6.75	10.8	123	73	AZ2150W-1AE-9DF
12	9.0	14.4	92	130	AZ2150W-1AE-12DF
24	18.0	38.8	46	520	AZ2150W-1AE-24DF
48	36.0	57.6	23	2,080	AZ2150W-1AE-48DF

\* Substitute "DEF" in place of "DF" for epoxy sealed version.  
Add "T" at the end of part number for 3000 Vrms dielectric strength version.

## MECHANICAL DATA



Dimensions in inches with metric equivalents in parentheses. Tolerance:  $\pm .010$ "



**AMERICAN ZETTLER, INC.**

[www.azettler.com](http://www.azettler.com)

75 COLUMBIA • ALISO VIEJO, CA 92656 • PHONE: (949) 831-5000 • FAX: (949) 831-8642 • E-MAIL: SALES@AZETTLER.COM

2/18/11