

AC-DC SWITCHING ADAPTER SPECIFICATION

MODEL NO.	SPS24-48	ISSUE DATE	2010-4-2
CUSTOMER		REF. NO.	1-1

INPUT

INPUT VOLTAGE	100 to 240 Vac
INPUT FREQUENCY	50 to 60 Hz
NO LOAD POWER CONSUMPTION	< 0.3 W
INPUT FULL LOAD CURRENT(at 120 Vac)	1.1 A Max

OUTPUT

LIGHT LOAD OUTPUT VOLTAGE	9/12/13.5/15/18/20/24 V dc +10%
FULL LOAD OUTPUT VOLTAGE	9/12/13.5/15/18/20/24 V dc ±10%
MIN LOAD OUTPUT CURRENT	0 A
MAX LOAD OUTPUT CURRENT	2.0A@9/12/13.5/15/18/20/24 V dc
LINE REGULATION	0.5 % Input 90 to 254 Vac output loaded at full load
SETUP,RISE,HOLD UPTIME	200ms,30ms,17ms/115Vac; 200ms,20ms,80ms/230Vac

OVERALL PERFORMANCE

TOTAL OUTPUT POWER	48 W Max
EFFICIENCY	COMPLIED with EUP

PROTECTION

<input checked="" type="checkbox"/> OVER CURRENT PROTECTION	<input checked="" type="checkbox"/> SHORT CIRCUIT PROTECTION
<input checked="" type="checkbox"/> OVER VOLTAGE PROTECTION	<input type="checkbox"/> L.P.S (Limits for power source)
<input checked="" type="checkbox"/> OVER POWER PROTECTION	<input type="checkbox"/> OTHER

HI-POT

INPUT TO OUTPUT	3000 Vac 5 mA 50/60 Hz
INPUT TO CASE	3000 Vac 5 mA 50/60 Hz
OUTPUT TO CASE	1500 Vac 5 mA 50/60 Hz
ISOLATION RESISTANCE	100 M Ohms I/P-O/P I/P/Enclosure
APPLIANCE	CLASS I <input type="checkbox"/> II <input checked="" type="checkbox"/> III <input type="checkbox"/>

ENVIRONMENTAL

OPERATING TEMPERATURE	0 °C to 35 °C
STORGE TEMPERATURE	-20 °C to 50 °C
OPERATING HUMIDITY	20%-85% RH. NON-CONDENSING
STORGE HUMIDITY	10%-90% RH. NON-CONDENSING

SAFFTY STANDARDS

SAFETY STANDARDS	EN60950
EMC STANDARDS	CE

RELIABILITY

MTBF	50000 Hours min
BURN-IN	4 Hours 25°C,full load,220Vac,50Hz

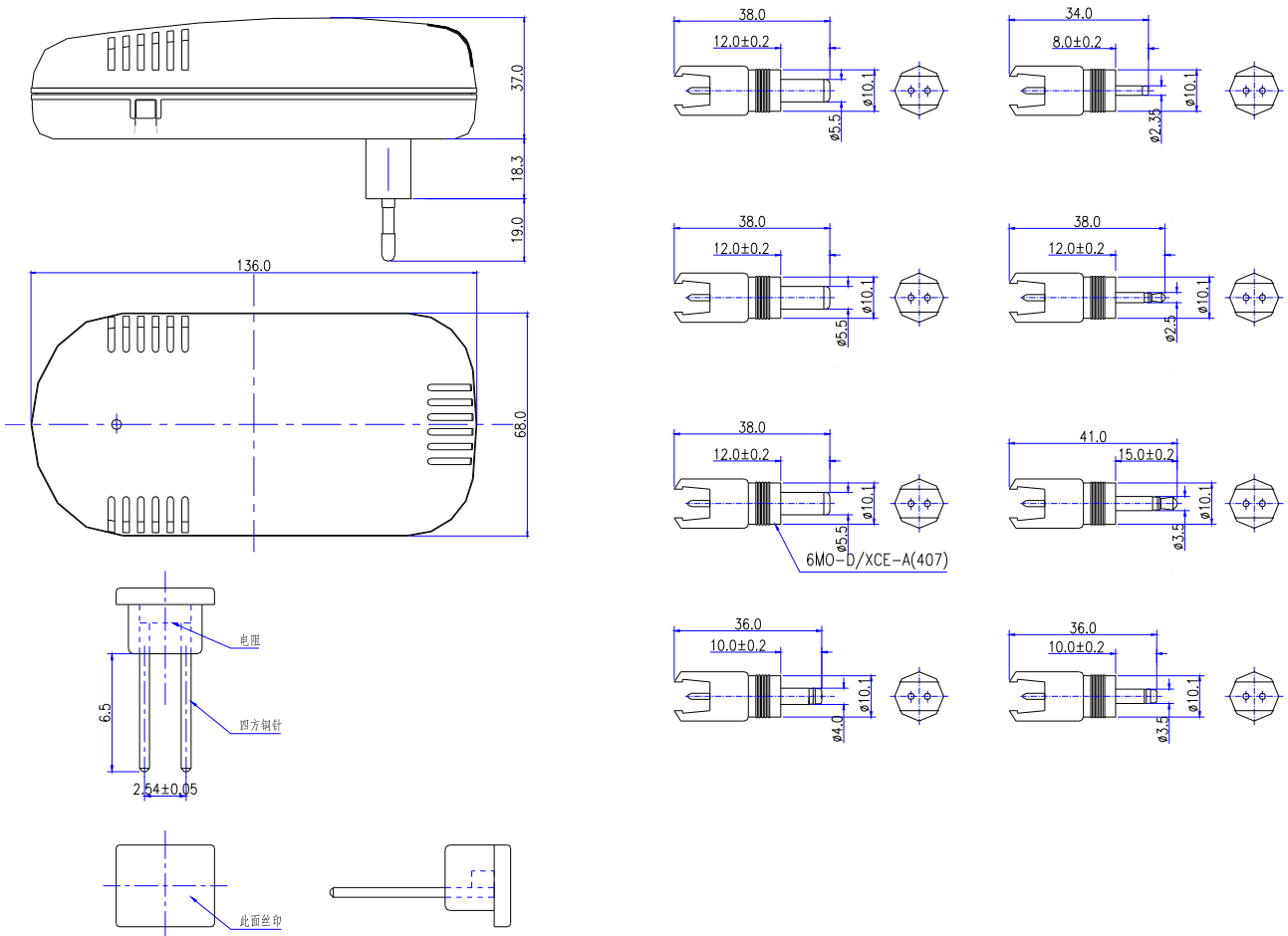
AC-DC REGULATED SWITCHING POWER ADAPTER SPECIFICATION

MODEL NO.	SPS24-48	ISSUE DATE	2010-4-2
CUSTOMER		REF. NO.	1-1

MECHANICAL SPECIFICATION

DIMENSION	136mm(L)* 68mm(W)* 74.3mm(H)
WEIGHT	300 g MAX exclude packing
INPUT CORD	
INPUT PLUG	EU
OUTPUT CORD	
OUTPUT PLUG	
OUTPUT CONNECTOR	8XCC : :2.5 3.5 5.5x2.1 5.5x2.5 1.35x3.5 4.0x1.7 5.5x1.5 2.35x0.75

APPEARANCE & DIMENSIONS



APPROVE:

AUDITING:

CONNER: