

Single phase, non stabilised dc power supply **GNC 24-10**



Advantages

Unsusceptible to voltage surges or transients
High overload capacity
DC OK signalling via LEDs
Capacitor accessories
Very good corrosion protection and low noise thanks to BLOCKIMPEX vacuum impregnation
Impulse loading MKT-capacitors
Varistor wiring
Contact protected screw connection terminals complying with UVV BGV A3

Applications

Rugged DC power supply for harsh industrial applications.

Standards

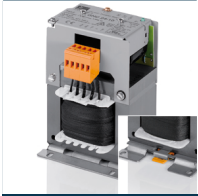


Non-stabilised dc power supply / Safety isolating transformer to VDE 0570 part 2-6, EN 61558-2-6, IEC 61558-2-6, UL 1012

Approvals



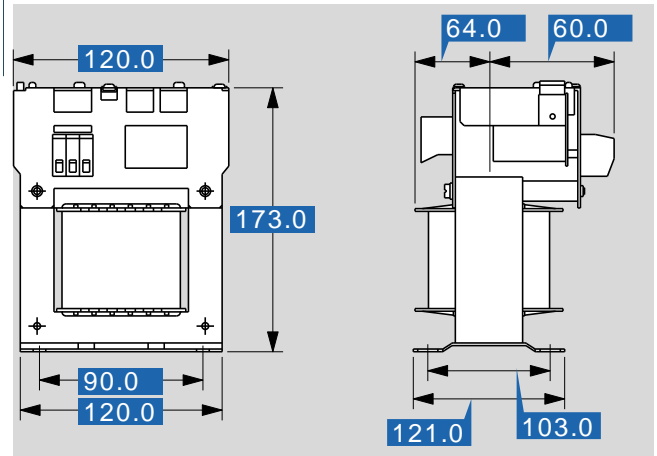
UL 5085-1/-2, CSA 22.2 No.66



Single phase, non stabilised dc power supply **GNC 24-10**

Electrical data	
Type	GNC 24-10
Input	
Input rated voltage	230/400 Vac, ±15 Vac
Rated frequency	50 - 60 Hz
Output	
Output rated voltage	24 Vdc
Power	240.00 W
Output rated current	10.00 A
Ripple factor	3 %
Standards	
Classification	Single phase non-stabilised dc power supply / safety isolating transformer
Approvals	
Approvals	cURus (transformer only)
Environment	
Ambient temperature max.	60° C
Cooling method	by self cooling
Safety and protection	
Type	open type
Class of Insulation System	VDE=B, UL=class 130
Protection index	IP 00
Safety class (prepared)	I
Short circuit strength	non-short-circuit proof
Order numbers	
Order Number	GNC 24-10

Mechanical data	
Type	GNC 24-10
Terminal and mounting	
Terminals	Screw-type terminals
Fixing method	Base plate
Fixing screws	M5
Measures and weights	
Weight	7.45 kg



Subjects to change.