

Features

- Wide Input Range AC 90 V to 264 V
- No Load Power Consumption Less Than 0.3 W
- Low Ripple & Noise
- 1 Year Warranty

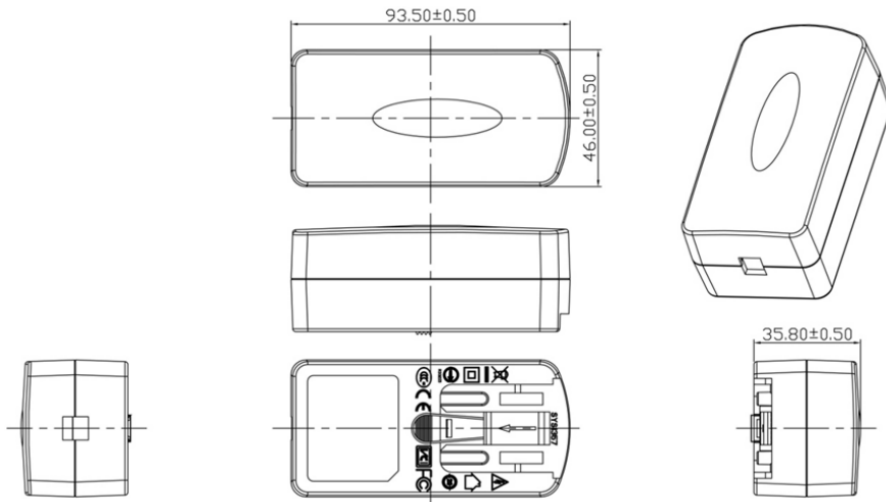
Marks / Approvals



Specifications

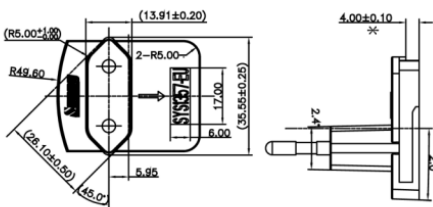
	MODEL	VOLTAGE	RIPPLE & NOISE	MAX. LOAD	MAX. POWER
OUTPUT	SYS 1449-1505-W*	5 V	200 mV p-p	3.0 A	15 W
	SYS 1449-2005-W*	5 V	200 mV p-p	4.0 A	20 W
	Standby Power Consumption	Max. 0.3 W rms @ AC nominal input and Output min. load			
	Load Regulation	± 5 % (typical)			
INPUT	Voltage	AC 90 V – 264 V			
	Frequency	47 Hz – 63 Hz			
	Current (rms max)	0.5 A max.			
	Surge Current	60 A @ power supply cold start, ambient temperature 25 °C			
PROTECTION	Leakage Current	0.25 mA @ 2 pins			
	Over Current	Yes, > 120 % Fold Back			
	Overvoltage	Yes, > 105 % Voltage limiting			
	Short Circuit	Yes, output to ground, auto recovery			
	Protection Class	II.			
OTHERS	No Load Operation	Yes, to protect the power supply and system from damage			
	Dielectric Strength	I/P-O/P (FG): AC 3 kV / 10 mA / 1 min.			
	Turn on delay	3000 ms max.			
	Hold-up time	8 ms			
ENVIRONMENT	MTBF	500,000 calculated hours at 25 °C, by Telcordia SR-332			
	Typ. Efficiency	> 76 %			
CONNECTION	Input Fuse	1A Fuse – Protection against power line surges and any abnormal condition			
	Temperature	Operating: 0 °C – 40 °C / Storage: -20 °C – 85 °C			
SAFETY	Humidity	Operating: 8 % RH to 90 % RH / Storage: 5 % RH to 95 % RH			
	Input	W2E: Europlug (CEE 7/16). W2: NEMA11 (US, JP, CN, TW). W3U: BS 1363 (UK). W2A: AS 3112 (AU/NZ). W2C: CPCS-CCC (CN). W2K: Korea			
EMI	Output	Standard DC plug: 2.1 mm × 5.5 mm × 11 mm. DC Cord: 150 cm rc 1185#18*1C+Shield			
EMS		CE GS CB FCC cULus			
DIMENSIONS		Compliance to EN 55022 Class B, EN 61000-3-2, -3			
NET WEIGHT		Compliance to EN 55024, 61000-4-2, -3, -4, -5, -6, -8, -11			
		72.5 mm × 34 mm × 45 mm			
		139 g (ref.)			

Mechanical case specification:

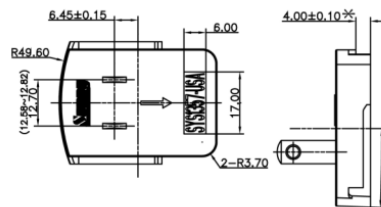


Mechanical specification (country housing):

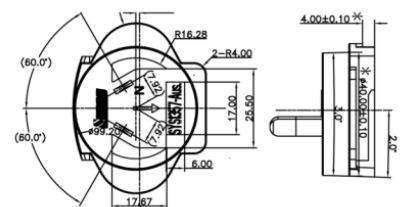
Europe type (W2E)



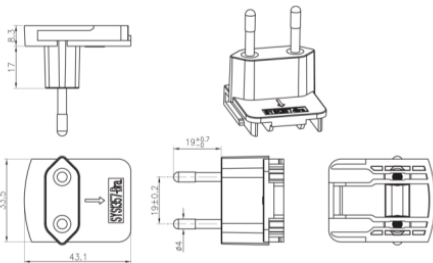
US type (W2)



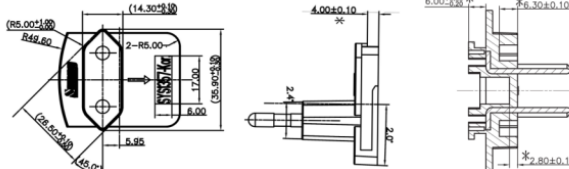
Australia type (W2A)



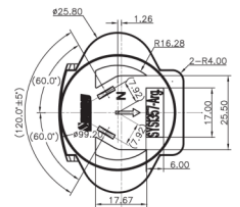
Brazil type (W2B)



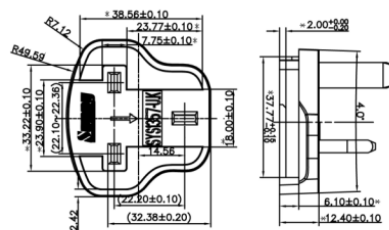
Korea type (W2K)



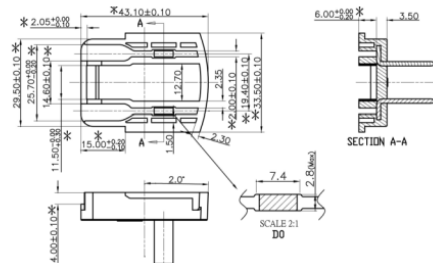
Argentina type (W2G)



UK type (W3U)



China type (W2C)



Cable specification:

1185#18*1C | 1500mm

