

## ■ FEATURES

- Low cost type
- Chassis mount
- All parts are approved by UL and CSA



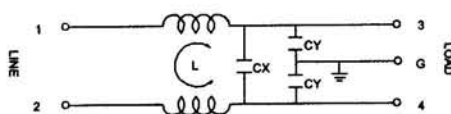
YG-T5



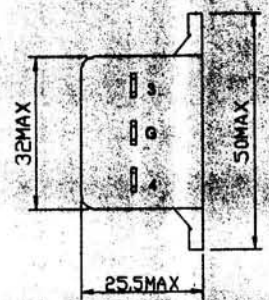
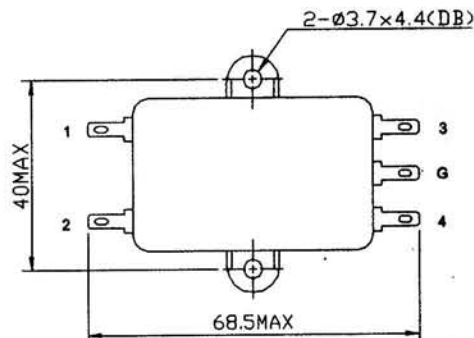
## ■ SPECIFICATIONS

RATED CURRENT		1A	3A	6A	10A
RATED VOLTAGE		125/250VAC			
POWER LINE FREQUENCY		50/60Hz			
HIPOT RATING (ONE MIN)	LINE TO LINE	1450VDC			
	LINE TO GROUND	2250VDC			
LEAKAGE CURRENT		0.8mA MAX.			
INSULATION RESISTANCE		100MΩ MIN 250V DC			
TEMPERATURE RISE		30°C MAX.			
OPERATING TEMPERATURE		-25 ~ +85°C			

## ■ CIRCUIT

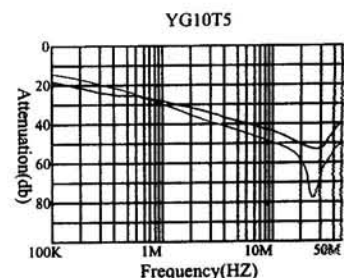
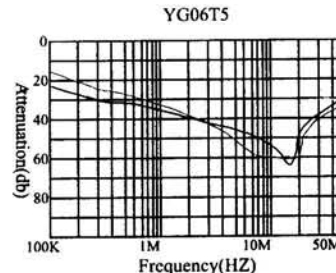
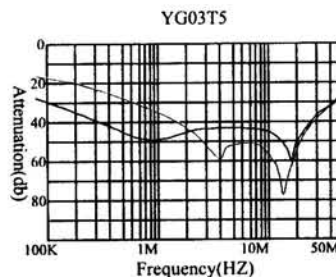
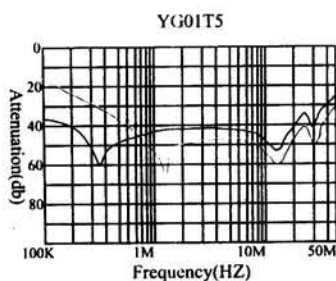


## ■ DIMENSION(MM)



YG-T5

## ■ NOISE ATTENUATION (— NORMAL MODE, — COMMON MODE)

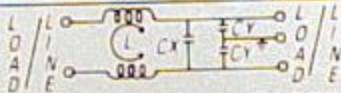


# YUNPEN EMI FILTER



YG01T5  
-25/+85°C

125/250V 1A  
50/60Hz HPF



L: 2 × 3.7 mH

CX: 0.1 μF (X2)  
CY: 3300 pF (Y)

LINE/LOAD

LOAD/LINE