

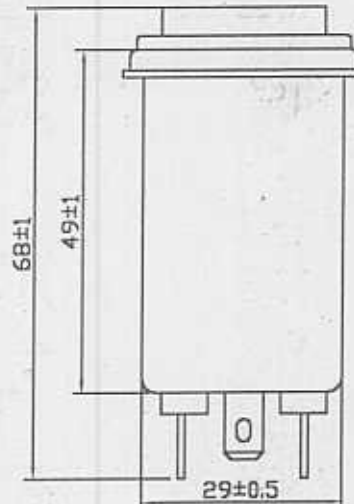
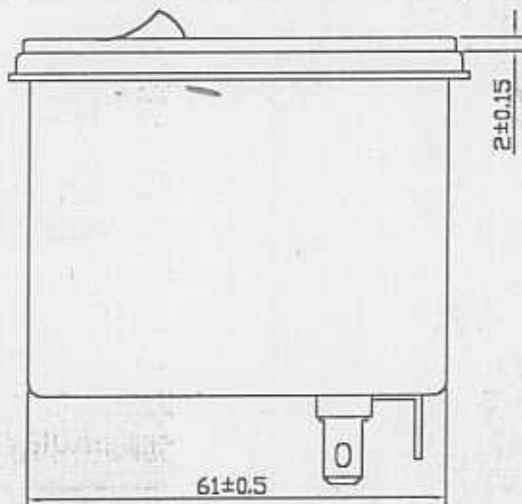
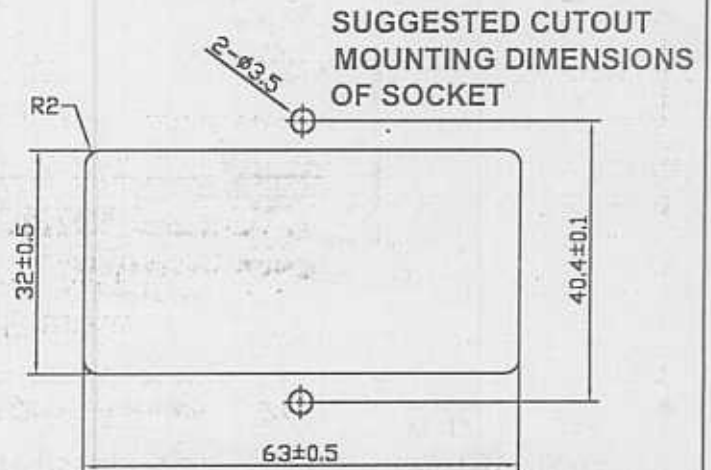
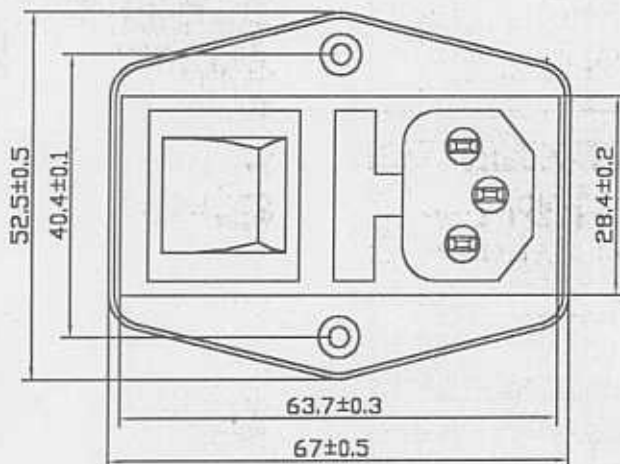
SPECIFICATION FOR APPROVAL

TO: 頂興

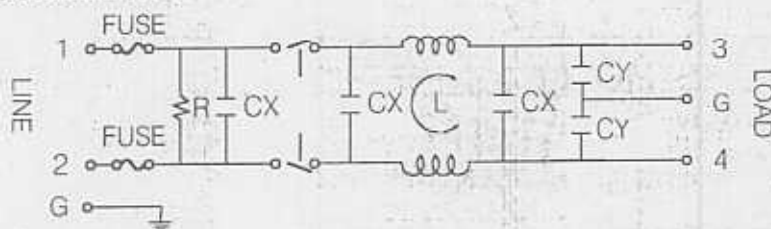
2/1

PART NAME	EMI FILTER	YUNPEN SAMPLE NO	YUD-0546
YUNPEN MODEL	YQ06A1	SAMPLE DATE	APR-29-2004
MODEL NO		OUR DRAWING NO	

1. PHYSICAL DIMENSIONS:(mm)



2. SCHEMATIC:



CX : 0.22uF
 CY : 2200pF
 R : 1MO
 L : 2X0.8mH

REPORTED BY	CHECKED BY	APPROVED BY	3
			2
			REV. 1

YUNPEN ELECTRONIC CO.,LTD

3F,NO.32,Chung Hsin Road,Shi Chih City,Taipei Hsion,Taiwan,R.O.C.

TEL:(02)2647-1327 FAX:(02)2647-1323

SPECIFICATION FOR APPROVAL

TO: 頂興

2/2


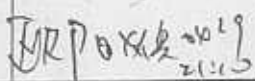
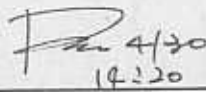
PART NAME	EMI FILTER	YUNPEN SAMPLE NO	YUD-0546
YUNPEN MODEL	YQ06A1	SAMPLE DATE	APR-29-2004
MODEL NO		OUR DRAWING NO	

3. ELECTRICAL CHARACTERISTICS:

- 3-1. RATED VOLTAGE 125/250VAC
- 3-2. RATED CURRENT 6 A
- 3-3. OPERATING FREQUENCY 50/60Hz
- 3-4. LEAK CURRENT: EACH LINE TO GROUND
 250VAC 50Hz 0.6mA MAX
- 3-5. HIPOT RATING. (FOR ONE MINUTE)
 LINE TO LINE 1450VDC
 LINE TO GROUND 2250VDC
- 3-6. INSULATION RESISTANCE 250VDC/100MOHM MIN
- 3-7. DIRECT CURRENT RESISTANCE 0.2 OHM MAX
- 3-8. OPERATING TEMPERATURE -25 TO +85 °C

4. SAFETY COMPLIANCE:

VDE FILE NO: 1630600-4730-0010/26192

REPORTED BY	CHECKED BY	APPROVED BY	3	
			2	
			REV. 1	

YUNPEN ELECTRONIC CO.,LTD

3F, NO.32, Chung Hsin Road, Shi Chih City, Taipei Hsion, Taiwan, R.O.C.

TEL: (02)2647-1327 FAX: (02)2647-1329