

■ FEATURES

- Low cost type
- Chassis mount
- All parts are approved by UL and CSA



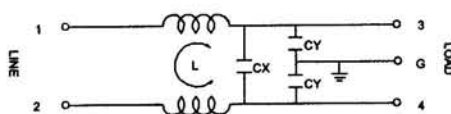
YG-T5



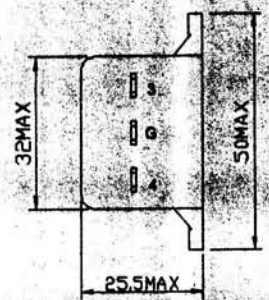
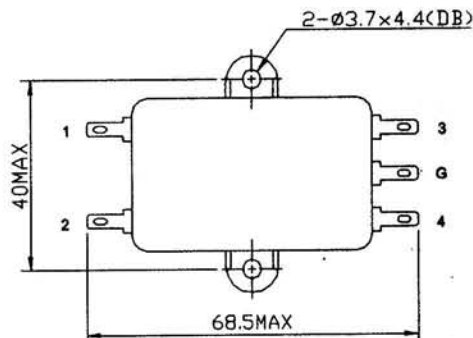
■ SPECIFICATIONS

RATED CURRENT		1A	3A	6A	10A
RATED VOLTAGE		125/250VAC			
POWER LINE FREQUENCY		50/60Hz			
HIPOT RATING (ONE MIN)	LINE TO LINE	1450VDC			
	LINE TO GROUND	2250VDC			
LEAKAGE CURRENT		0.8mA MAX.			
INSULATION RESISTANCE		100MΩ MIN 250V DC			
TEMPERATURE RISE		30°C MAX.			
OPERATING TEMPERATURE		-25 ~ +85°C			

■ CIRCUIT

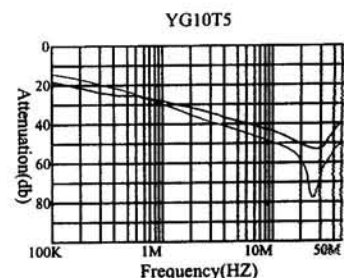
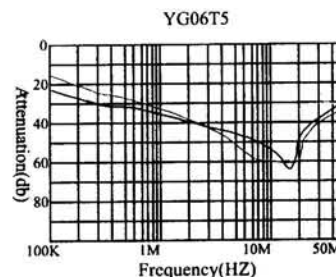
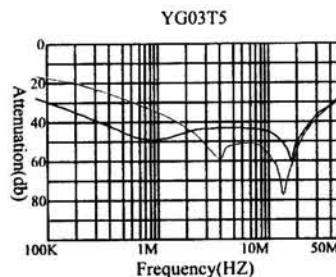
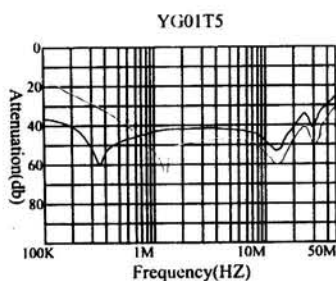


■ DIMENSION(MM)



YG-T5

■ NOISE ATTENUATION (— NORMAL MODE, — COMMON MODE)



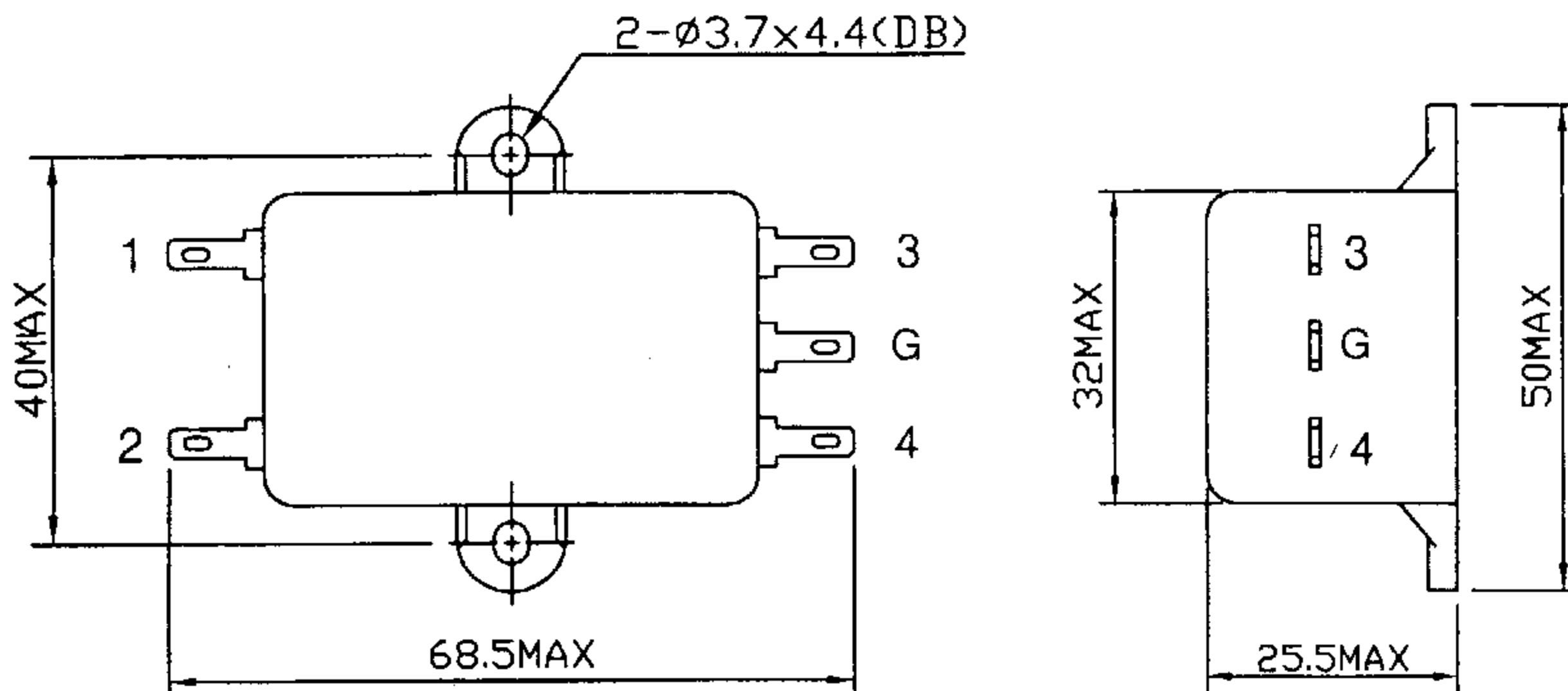
SPECIFICATION FOR APPROVAL

TO:

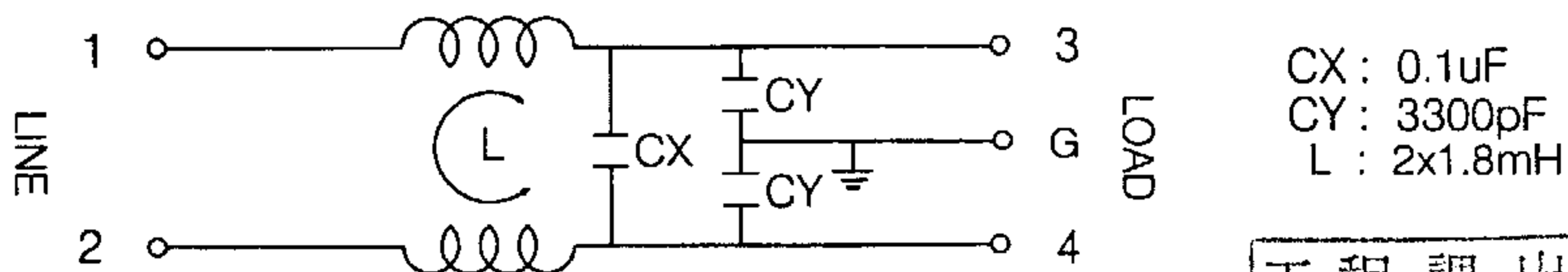
業務部 2/1

PART NAME	EMI FILTER	YUNPEN SAMPLE NO	FTB-0550
YUNPEN MODEL	YG03T5	SAMPLE DATE	AUG.23.2004
USED NO		OUR DRAWING NO	YDR-00026a

1. PHYSICAL DIMENSIONS:(mm)



2. SCHEMATIC:



CX : 0.1uF
 CY : 3300pF
 L : 2x1.8mH

工程課出圖章

發行日
ISSUE DATE SEP 02 2004

永鵬電子股份有限公司
YUNPEN ELECTRONIC CO., LTD.

編號

REPORTED BY	CHECKED BY	APPROVED BY	3	
			2	
			REV. 1	更新安規號碼

YUNPEN ELECTRONIC CO.,LTD

SPECIFICATION FOR APPROVAL

TO:

未 務 部 2/2

PART NAME	EMI FILTER	YUNPEN SAMPLE NO	FTB-0550
YUNPEN MODEL	YG03T5	SAMPLE DATE	AUG.23.2004
USED NO		OUR DRAWING NO	YDR-00026a

3.ELECTRICAL CHARACTERISTICS:

- 3-1.RATED VOLTAGE 125/250VAC
- 3-2.RATED CURRENT 3 A
- 3-3.OPERATING FREQUENCY 50/60Hz
- 3-4.LEAK CURRENT:EACH LINE TO GROUND
250VAC 50Hz 0.8mA MAX
- 3-5.HIPOT RATING:(FOR ONE MINUTE)
LINE TO LINE 1450VDC
LINE TO GROUND 1800VAC
- 3-6.INSULATION RESISTANCE 250VDC/100MOHM MIN
- 3-7.DIRECT CURRENT RESISTANCE 0.2 OHM MAX
- 3-8.OPERATING TEMPERATURE -25 TO +85°C

4.SAFETY COMPLIANCE:

UL FILE NO:E134751
CSA FILE NO:LR95210

工程課出圖章
發行日 ISSUE DAT SEP 02 2004
永鵬電子股份有限公司 YUNPEN ELECTRONIC CO., LTD.
編號:

YUNPEN ELECTRONIC CO.,LTD