

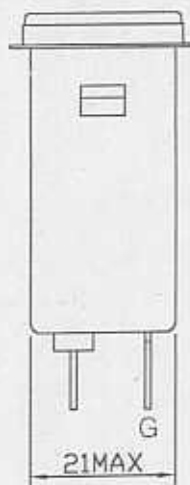
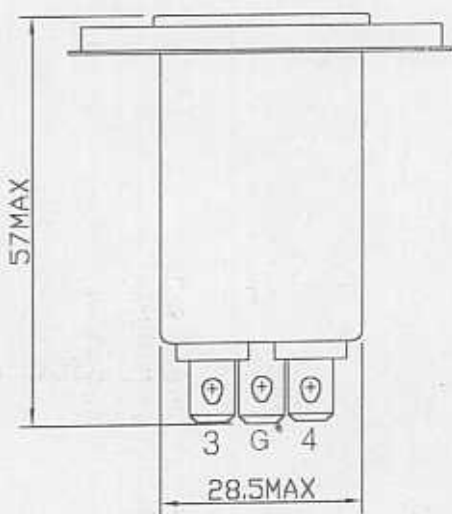
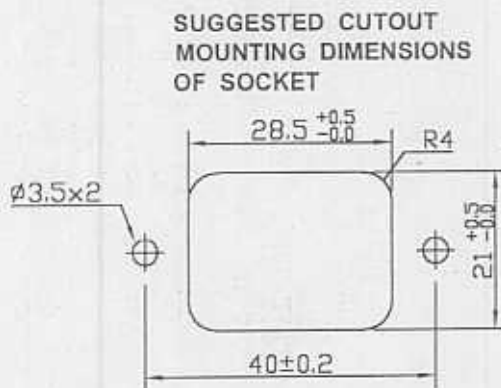
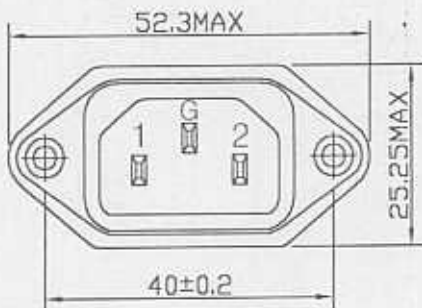
SPECIFICATION FOR APPROVAL

TO: 頂興

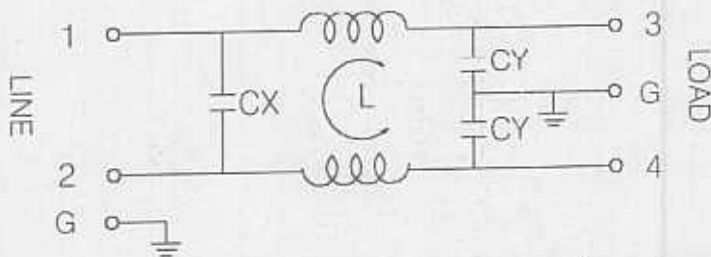
2/1

PART NAME	EMI FILTER	YUNPEN SAMPLE NO	YUD-0535
YUNPEN MODEL	YB01A1	SAMPLE DATE	APR-28-2004
MODEL NO		OUR DRAWING NO	

1. PHYSICAL DIMENSIONS:(mm)



2. SCHEMATIC:



CX : 0.1uF
 CY : 3300pF
 L : 2x3.7mH

REPORTED BY	CHECKED BY	APPROVED BY	3
凡景楚 4/28 17:05	[Signature] 4/28 8:00	[Signature] 4/29 17:15	2
			REV. 1

SPECIFICATION FOR APPROVAL

TO: 頂興

2/2

PART NAME	EMI FILTER	YUNPEN SAMPLE NO	YUD-0535
YUNPEN MODEL	YB01A1	SAMPLE DATE	APR-28-2004
MODEL NO		OUR DRAWING NO	

3. ELECTRICAL CHARACTERISTICS:

- 3-1. RATED VOLTAGE 125/250VAC
- 3-2. RATED CURRENT 1A
- 3-3. OPERATING FREQUENCY 50/60Hz
- 3-4. LEAK CURRENT: EACH LINE TO GROUND
 250VAC 50Hz 0.8mA MAX
- 3-5. HIPOT RATING (FOR ONE MINUTE)
 LINE TO LINE 1450VDC
 LINE TO GROUND 1800VAC
- 3-6. INSULATION RESISTANCE 250VDC/100MOHM MIN
- 3-7. DIRECT CURRENT RESISTANCE 0.5 OHM MAX
- 3-8. OPERATING TEMPERATURE -25 TO +85 °C

4. SAFETY COMPLIANCE:

- UL FILE NO: E134751
- CSA FILE NO: LR95210
- VDE FILE NO: 40007880
- SEMKO FILE NO: 9444068
- FIMKO FILE NO: 184116-01...03
- NEMKO FILE NO: P95102844
- DEMKO FILE NO: 303953

REPORTED BY	CHECKED BY	APPROVED BY	3	
			2	
凡靈芝 4/28 22:05	JR POW 2004 P:00	4/29 17:45	REV. 1	