

■ FEATURES

- Low cost type
- Chassis mount
- All parts are approved by UL and CSA



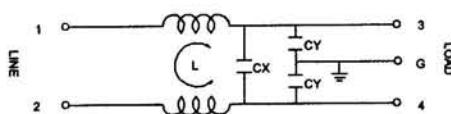
YG-T5



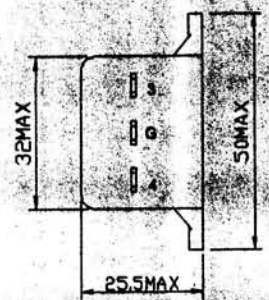
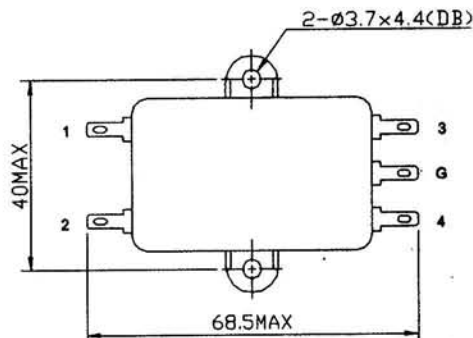
■ SPECIFICATIONS

RATED CURRENT		1A	3A	6A	10A
RATED VOLTAGE		125/250VAC			
POWER LINE FREQUENCY		50/60Hz			
HIPOT RATING (ONE MIN)	LINE TO LINE	1450VDC			
	LINE TO GROUND	2250VDC			
LEAKAGE CURRENT		0.8mA MAX.			
INSULATION RESISTANCE		100MΩ MIN 250V DC			
TEMPERATURE RISE		30°C MAX.			
OPERATING TEMPERATURE		-25 ~ +85°C			

■ CIRCUIT



■ DIMENSION(MM)



YG-T5

■ NOISE ATTENUATION (— NORMAL MODE, — COMMON MODE)

