

## ■ FEATURES

- Low cost type
- Chassis mount
- All parts are approved by UL and CSA



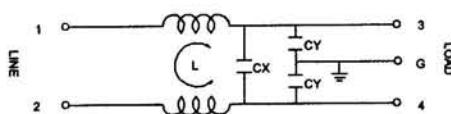
YG-T5



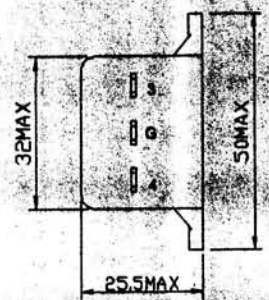
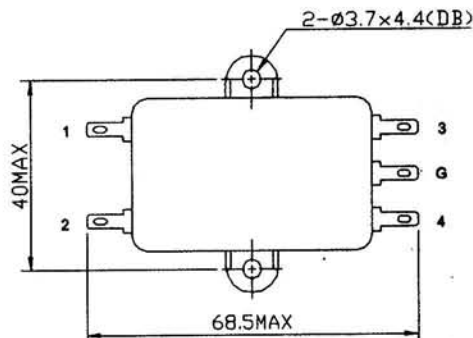
## ■ SPECIFICATIONS

| RATED CURRENT             |                | 1A                | 3A | 6A | 10A |
|---------------------------|----------------|-------------------|----|----|-----|
| RATED VOLTAGE             |                | 125/250VAC        |    |    |     |
| POWER LINE FREQUENCY      |                | 50/60Hz           |    |    |     |
| HIPOT RATING<br>(ONE MIN) | LINE TO LINE   | 1450VDC           |    |    |     |
|                           | LINE TO GROUND | 2250VDC           |    |    |     |
| LEAKAGE CURRENT           |                | 0.8mA MAX.        |    |    |     |
| INSULATION RESISTANCE     |                | 100MΩ MIN 250V DC |    |    |     |
| TEMPERATURE RISE          |                | 30°C MAX.         |    |    |     |
| OPERATING TEMPERATURE     |                | -25 ~ +85°C       |    |    |     |

## ■ CIRCUIT

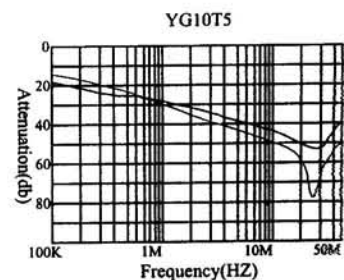
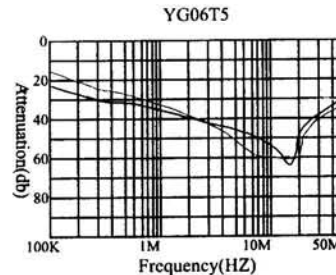
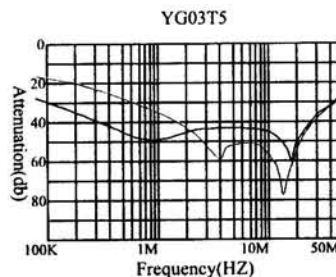
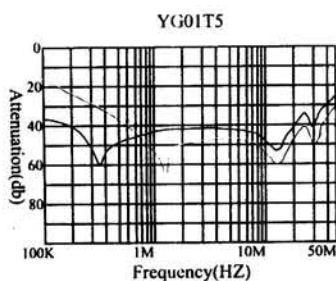


## ■ DIMENSION(MM)



YG-T5

## ■ NOISE ATTENUATION (— NORMAL MODE, — COMMON MODE)



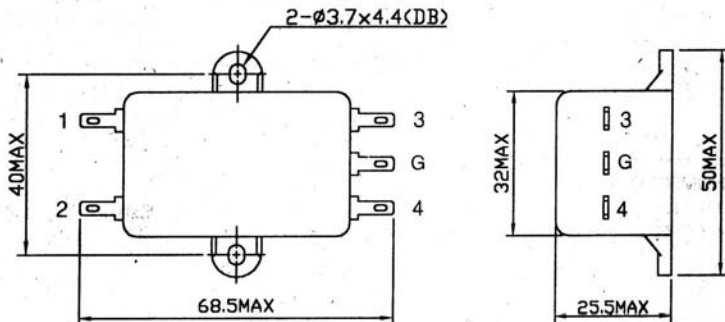
# SPECIFICATION FOR APPROVAL

TO: 頂典

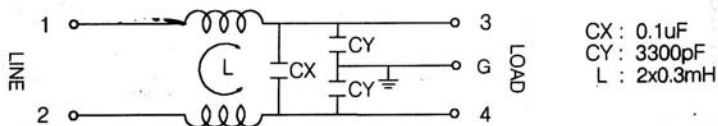
2/1

|              |            |                  |             |
|--------------|------------|------------------|-------------|
| PART NAME    | EMI FILTER | YUNPEN SAMPLE NO | YUD-0585    |
| YUNPEN MODEL | YG10T5     | SAMPLE DATE      | NAY-14-2004 |
| MODEL NO     |            | OUR DRAWING NO   |             |

## 1. PHYSICAL DIMENSIONS:(mm)



## 2. SCHEMATIC:



|             |            |             |        |  |
|-------------|------------|-------------|--------|--|
| REPORTED BY | CHECKED BY | APPROVED BY | 3      |  |
|             |            |             | 2      |  |
|             |            |             | REV. 1 |  |

# SPECIFICATION FOR APPROVAL

TO: 頂典

2/2

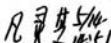
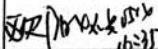
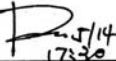
|              |            |                  |             |
|--------------|------------|------------------|-------------|
| PART NAME    | EMI FILTER | YUNPEN SAMPLE NO | YUD-0585    |
| YUNPEN MODEL | YG10T5     | SAMPLE DATE      | NAY-14-2004 |
| MODEL NO     |            | OUR DRAWING NO   |             |

**3. ELECTRICAL CHARACTERISTICS:**

- 3-1. RATED VOLTAGE ..... 125/250VAC
- 3-2. RATED CURRENT ..... 10 A
- 3-3. OPERATING FREQUENCY ..... 50/60Hz
- 3-4. LEAK CURRENT: EACH LINE TO GROUND  
     250VAC 50Hz ..... 0.8mA MAX
- 3-5. HIPOT RATING. (FOR ONE MINUTE)  
     LINE TO LINE ..... 1450VDC  
     LINE TO GROUND ..... 1800VAC
- 3-6. INSULATION RESISTANCE ..... 250VDC/100MOHM MIN
- 3-7. DIRECT CURRENT RESISTANCE ..... 0.1 OHM MAX
- 3-8. OPERATING TEMPERATURE ..... -25 TO +85 °C

**4. SAFETY COMPLIANCE:**

UL FILE NO: E134751  
 CSA FILE NO: LR95210

|  |   |   |        |  |
|--|---|---|--------|--|
| REPORTED BY  | CHECKED BY  | APPROVED BY   | 3      |  |
|  |  |  | 2      |  |
|  |   |   | REV. 1 |  |