

Order information

Profile Housing PG 1

extruded profiles, natural anodized,
WxDxH 260x200x88,5 mm

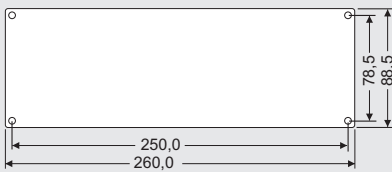
Part no.: 131040

Scope of delivery:

- 2x Side profile 4, l=195mm
- 1x Bottom plate 1,5mm, natural anodized
- 1x Top plate, with holes, natural anodized
- 2x Front plate 2,5mm, natural anodized
- Mounting accessory

Accessory:

Front plate



Aluminum 2,5mm, natural anodized

Part no.: 139144 1000

Mounting Set

8x Metal screw Ø5x20 mm
4x Plastic feed 12x12x6 mm

Part no.: 139144



Profile Housing PG 1



The profile housing PG 1 consist of two strong side profile, top- and bottom plate and two end plates (2,5mm). The construction of the side profile includes different slots for mounting power devices like amplifiers or power transistors and for plug in PCB and plates.

- Side profile 4, natural anodized (see page 2.3) mounting high
- Outer surface with cooling fins and T-slot for nuts M3
- Slots for plug in electronic devices and plates in different
- Special slots for metrical screws M3 allows direct mounting of power amplifiers and transistors

Order information

Euro Cooling Fin Housing EKG 1

extruded profiles, natural anodized,
DxWxH 168x110x54 mm

Part no.: 130040

Euro Cooling Fin Housing EKG 1s

extruded profiles, black anodized,
DxWxH 168x110x54 mm

Part no.: 130041

Scope of delivery:

- 2x Fin Profile 2
- 2x Endplate
- 1x Mounting set

Asseccories:

Endplate

Aluminum, natural anodized

Part no.: 139041

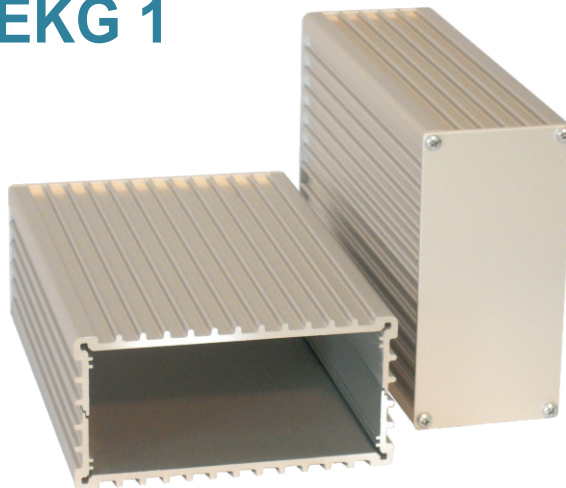
Mounting Set

8x Metal screw Ø 3,0x10/12 mm
4x Plastic feed Ø 8 mm

Part no.: 139140



Euro Cooling Fin Housing EKG 1



Cooling fin housings are designed for using in electronic industrie. The shape of the profile (with fins) increase the surface of the housing and so the heat abstraction of the housing is very high. For plug in electronic devices (width 100mm) the profile provides slots.

- Cooling fin profile 2, natural anodized or black anodized (see page 2.4) devices or plates
- Shape with fins on the outer surface
- Slots for mounting electronic
- Housing profiles and endplates are fit together by metal screws