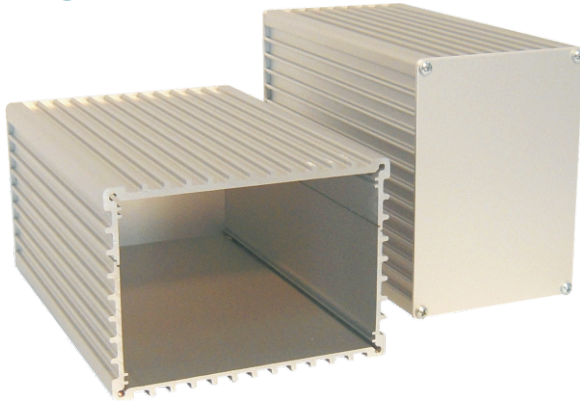


**pro  
Ma**

## Euro Cooling Fin Housing EKG 2



The shape of the extruded profile increase the surface of the housing and so the heat abstraction is very high. EKG 2 has similar construction like EKG 1 but 25mm higher space inside. Like all other EKG housings, EKG 2 is available in natural anodized or black anodized.

- Cooling fin profile 2 + Cooling fin profile 3, natural anodized or black anodized  
(see page 2.4)
- Shape with fins on the outer surface
- Slots for mounting electronic devices or plates
- Housing profiles and endplates are fit together by metal screws Ø3,0mm

### Order information

#### Euro Cooling Fin Housing EKG 2

Aluminum profiles, natural anodized, DxWxH 168x110x79 mm

**Part no.: 130044**

#### Euro Cooling Fin Housing EKG 2s

Aluminum profiles, black anodized, DxWxH 168x110x79 mm

**Part no.: 130045**

### Scope of delivery:

1x Cooling Fin Profile 2  
1x Cooling Fin Profile 3  
2x Endplate  
1x Mounting set

### Accessories:

#### End plate

Aluminum, 1,5mm, natural anodized  
**Part no.: 139045**

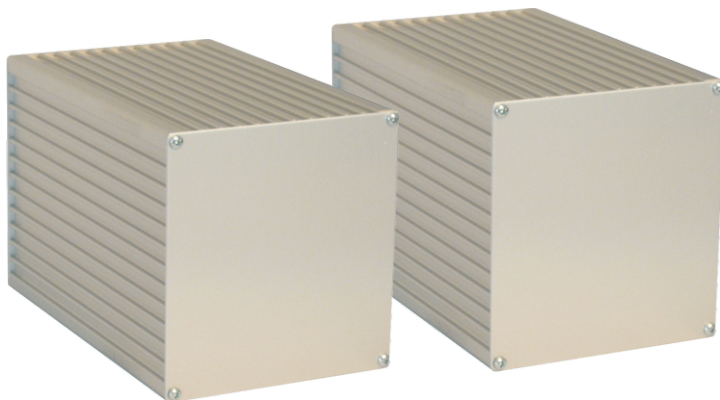
#### Mounting Set

8x Metal screws Ø 3,0x10/12 mm  
4x Plastic feed Ø 8 mm

**Part no.: 139140**

**pro  
Ma**

## Euro Cooling Fin Housing EKG 3



Cooling fin housings are designed for using in electronic industrie. The shape of the profile increase the surface of the housing and so the heat abstraction is very high.

EKG 3 is the highest version of Cooling Fin Housings. Optionally it is possible to mill slots in the profiles to get better ventilation.

- Cooling fin profile 3, natural anodized or black anodized  
(see page 2.4)
- Shape with fins on the outer surface
- Slots for mounting electronic devices or plates
- Inner space: 100x99mm
- Housing profiles and endplates are fit together by metal screws Ø3,0mm

Subject to technical changes

### Bestell Informationen

#### Euro Cooling Fin Housing EKG 3

Aluminum profiles, natural anodized, DxWxH 168x110x104 mm

**Part no.: 130048**

#### Euro Cooling Fin Housing EKG 3s

Aluminum profiles, black anodized, DxWxH 168x110x104 mm

**Part no.: 130049**

### Scope of delivery:

2x Cooling Fin Profile 3  
2x Endplate  
1x Mounting set

### Accessories:

#### End plate

Aluminum, 1,5mm, natural anodized  
**Part no.: 139049**

#### Mounting Set

8x Metal screws Ø 3,0x10/12 mm  
4x Plastic feed Ø 8 mm

**Part no.: 139140**