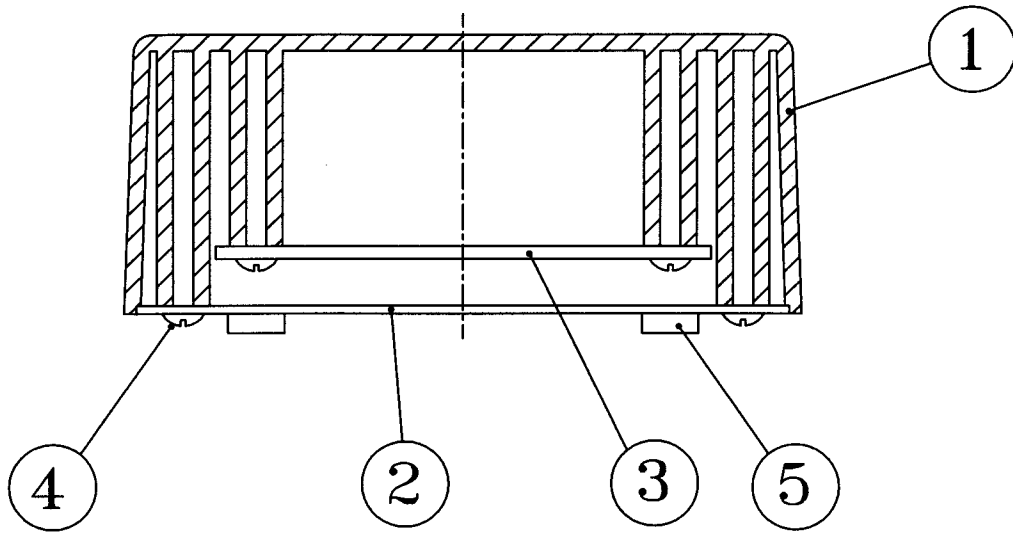
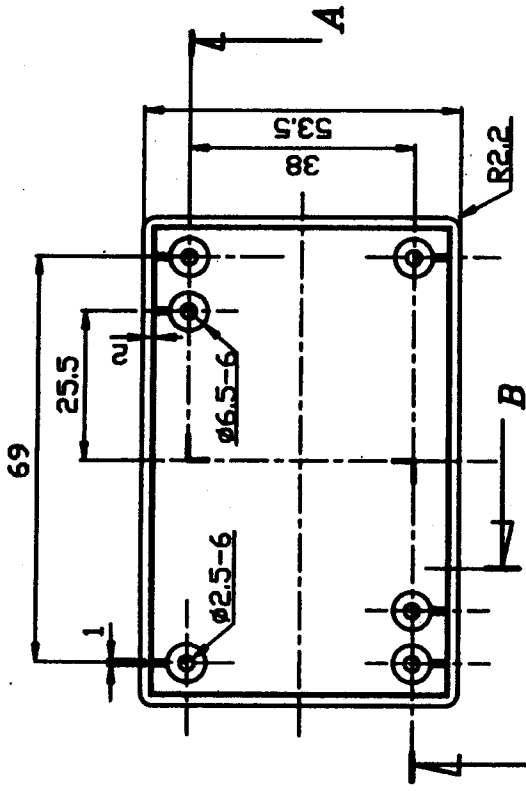


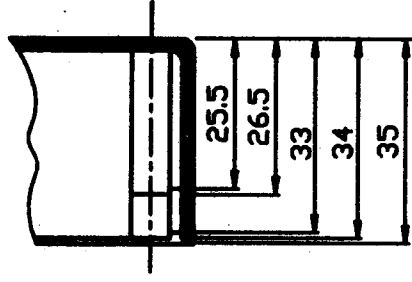
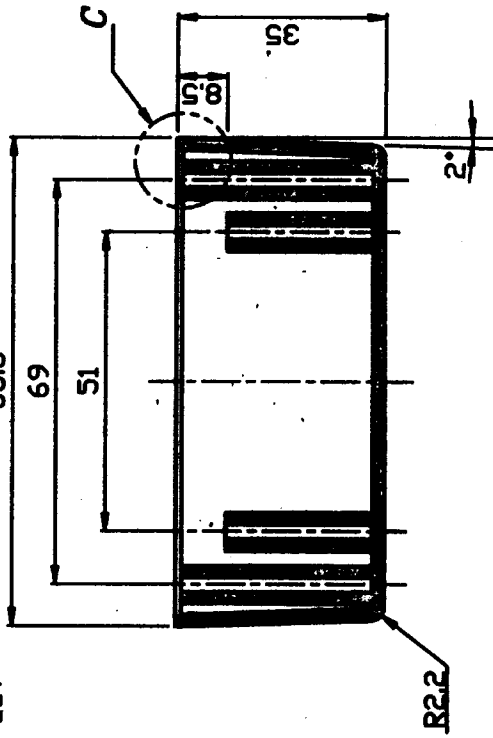
△	Date	Name	Descriptions



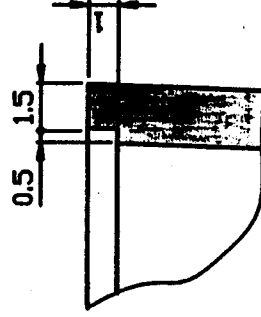
5	Rubber Pad	4	SBR(NITO NO 500)	7x7x2.5	With back glue	
4	Self-tapping Screw	6	Steel	∅3x6	Zn-Plated	
3	PCB	1	PF	t=1.6 94HB		
2	Bottom Cover	1	A6061P-1/2H	t=1.0		
1	Top Cover	1	ABS	t=2.0		
No	Description	Q'ty	Material	Specification	Finish	Remark
Drawn	Checked	Approved	SCI No.	Model Name		Project Box
黄平平	<i>[Signature]</i>		Customer No.	Model No.		R19-1
06/05/'08	6/4-'08		Unit	mm	SHIN CHIN INDUSTRIAL CO., LTD.	
						REV. 0



A-A SEC



B-SEC



C-SCALE 5:1

A-A SEC

1	Top Cover	1	ABS	Block	Finish	Remark
No	Description	Q'ty	Material	Specification	Model Name	Project Box
Drawn	Checked	Approved	SCI No.	Customer No.	Model No.	R19-1-1
黃平平	Handwritten	Handwritten				REV.
06/05/08	6/11-08		Unit	mm	SHIN CHIN INDUSTRIAL CO., LTD.	0

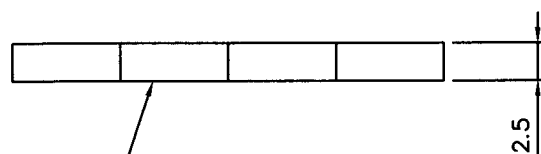
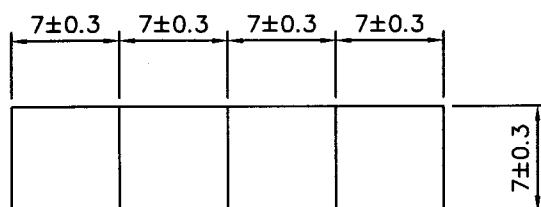
Date	Name	Descriptions	No

Date	Name	Description	No
			△

$\phi 3.5-4$

2	Bottom Cover	1	A6061P-1/2H	t=1.0		
No	Description	Q'ty	Material	Specification	Finish	Remark
Drawn	Checked	Approved	SCI No.		Model Name	Project Box
黄平平	<i>[Signature]</i>		Customer No.		Model No.	R19-1-2
06/05/'08	6/11-'08		Unit	mm	SHIN CHIN INDUSTRIAL CO., LTD.	
						REV. 0

Date	Name	Description	No
			△



Application of gum

(excluding gum)

5	Rubber Pad	1	SBR(NITO Na 500)	Black T=2.5		
No	Description	Q'ty	Material	Specification	Finish	Remark
Drawn	Checked	Approved	SCI BOM No.		Model Name	Project Box
黃平平	<i>[Signature]</i>		Customer No.		Model No.	R19-1-5
06/04/'08	6/11-'08		Unit	mm	SHIN CHIN INDUSTRIAL CO., LTD.	
						REV. 0