

# SPECIFICATION FOR APPROVAL

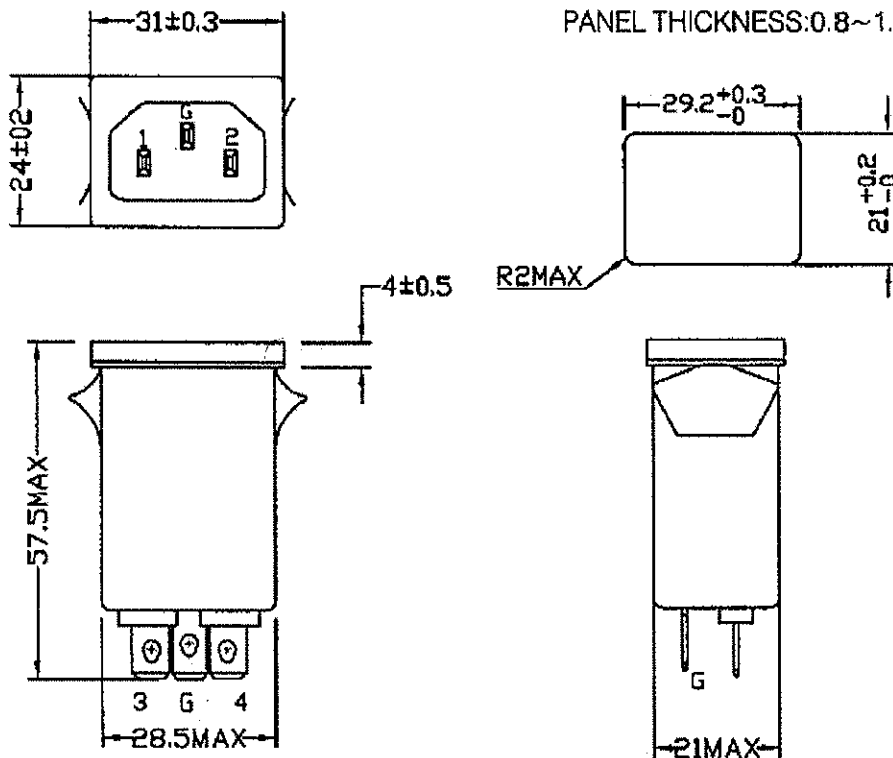
TO:

2/1

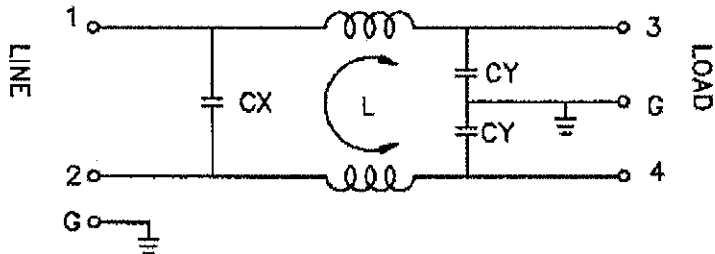
PART NAME	EMI FILTER	SAMPLE NO	FTB-4110
TYPE	YO06T1	SAMPLE DATE	APR.24.2009
MODEL NO	BR07103300-A	OUR DRAWING NO	YDR-00410

**1. PHYSICAL DIMENSIONS:(mm)**

SUGGESTED CUTOUT  
MOUNTING DIMENSIONS  
OF SOCKET  
PANEL THICKNESS:0.8~1.5mm



**2.SCHEMATIC:**



CX:0.1uF  
CY:3300pF  
L:2x0.7mH

REPORTED BY	CHECKED BY	APPROVED BY	3	
	<i>lew</i>	<i>fp</i>	2	
			REV. 1	

# SPECIFICATION FOR APPROVAL

TO:

2/2

<b>PART NAME</b>	<b>EMI FILTER</b>	<b>SAMPLE NO</b>	<b>FTB-4110</b>
<b>TYPE</b>	<b>Y006T1</b>	<b>SAMPLE DATE</b>	<b>APR.24.2009</b>
<b>MODEL NO</b>	<b>BR07103300-A</b>	<b>OUR DRAWING NO</b>	<b>YDR-00410</b>

**3.ELECTRICAL CHARACTERISTICS:**

- 3-1.RATED VOLTAGE ..... 125/250VAC
- 3-2.RATED CURRENT ..... 6A
- 3-3.OPERATING FREQUENCY..... 50/60Hz
- 3-4.LEAK CURRENT:EACH LINE TO GROUND  
     250VAC 50Hz ..... 0.8mA MAX
- 3-5.HIPOT RATING:(FOR ONE MINUTE)  
     LINE TO LINE ..... 1450VDC  
     LINE TO GROUND ..... 1800VAC
- 3-6.INSULATION RESISTANCE ..... 250VDC/100MOHM MIN
- 3-7.DIRECT CURRENT RESISTANCE .....0.15 OHM MAX
- 3-8.OPERATING TEMPERATURE ..... -25 TO +85°C

**4.SAFETY COMPLIANCE:**

UL FILE NO :E134751  
 CSA FILE NO:LR95210  
 VDE FILE NO:40007880  
 CE