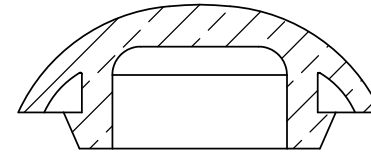
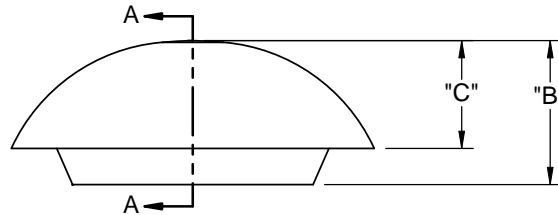
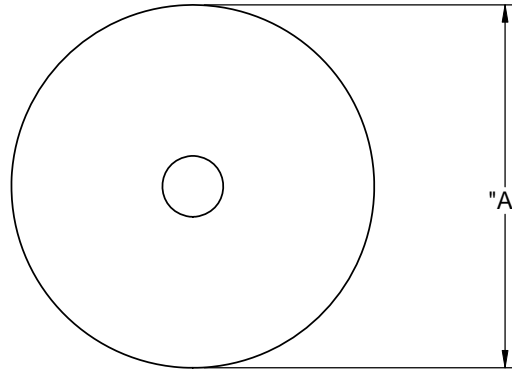


PART NO.	HEAD DIAMETER "A"	OVERALL HEIGHT "B"	HEAD HEIGHT "C" REF	MOUNTING HOLE DIAMETER
LTP-1	1.26 [32]	.500 [12.7]	.374 [9.5]	.875±.005 [22.23±0.13]
LTP-2	1.54 [39.2]	.539 [13.7]	.413 [10.5]	1.093±.005 [27.76±0.13]
LTP-3	1.82 [46.2]	.579 [14.7]	.433 [11]	1.375±.005 [34.93±.005]
LTP-4	.92 [23.4]	.449 [11.4]	.287 [7.3]	.500±.010 [12.7±0.25]
LTP-5	1.15 [29.2]	.512 [13]	.350 [8.9]	.750±.010 [19.1±0.25]
LTP-6	1.41 [35.8]	.559 [14.2]	.398 [10.1]	1.000±.010 [25.4±0.25]



**NOTES:**

1. MATERIAL: SILICONE RUBBER UL 94 V-0 (RMS-398)
2. COLOR: BLACK
3. MAXIMUM PANEL THICKNESS; .125 [3.2]
4. ALTERNATE UNITS FOR REFERENCE ONLY

G	SEE CO 200362 FOR CHANGES	SK	05/11/09	TITLE: <b>LIQUID TIGHT PLUG</b>					DWG IN IN [MM]	
F	SEE CO 200340 FOR CHANGES	SK	02/13/09							
E	SEE CO 200329 FOR CHANGES	SK	02/19/09	CREATED USING SOLIDWORKS	FILE #: LTP	DWN: BR	APP: BR	FINAL		
D	SEE CO 200303 FOR CHANGES	SK	01/06/09	TOLERANCES UNLESS NOTED	SHEET: 1 OF 1	SHEET SIZE: A	DT: 06/06/06			
C	SEE ECN #1298 FOR CHANGES	SK	03/16/07	.XX=±.010	RE: <b>RICHCO, INC.</b>		<b>RICHCO, INC.</b> ENG@RICHCO-INC.COM (773) 539-4060		PART #	PRINT TYPE
B	SEE ECN #1294 FOR CHANGES	SK	03/07/07	.XXX=±.005						
A	RELEASED FOR PRODUCTION	SK	08/31/06	FRAC.=±1/64	<b>SEE TABLE</b>		<b>CA</b>			
REV.	DESCRIPTION	ENGR.	DATE	ANG.=±1°						