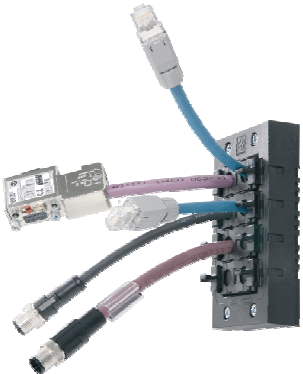


DATA SHEET	52220000
SKINTOP® CUBE	valid from : 23.03.2011

The **SKINTOP® CUBE** multi cable bushing system is made up of just a frame (SKINTOP®CUBE FRAME) and flexible clip sealing modules (SKINTOP®CUBE MODULES).
 It is able to assemble the SKINTOP® CUBE on 16- and 24-pole connector openings and is used as a entry in a enclosure for converted cables and cords with different diameters.
 The system offers strain relief, protection class and protection against vibration. During the removing of the modules remains the frame on the housing.



SKINTOP® CUBE FRAME

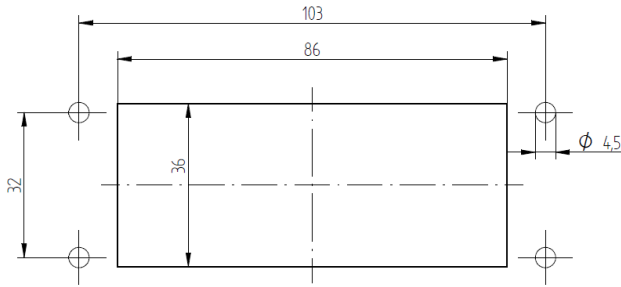
Frame and down holder:
 Glass balls reinforced PA, RAL 9005
 Flat sealing:
 CR-material, RAL 9005



Pic. 1: 24-pole frame

SKINTOP® CUBE FRAME 16

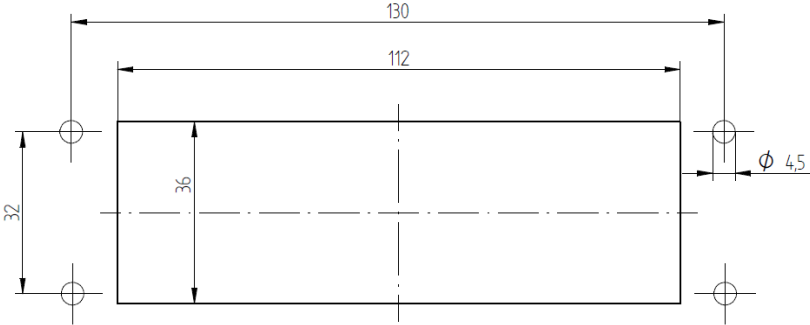
for 16-pole connector openings



Pic. 2: 16-pole connector opening

SKINTOP® CUBE FRAME 24

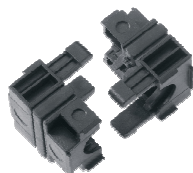
for 24-pole connector openings



Pic. 3: 24-pole connector opening

DATA SHEET	52220000
SKINTOP® CUBE	valid from : 23.03.2011

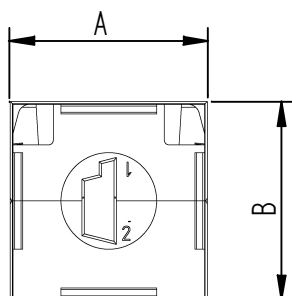
SKINTOP® CUBE MODULE



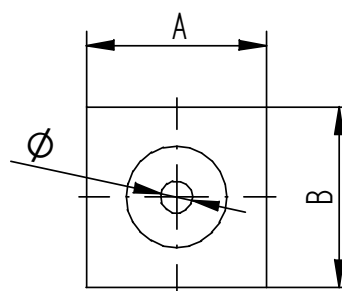
Clip sealing module:
Special- PP, RAL 9005
Sealing:
LSE2-sealing, RAL 9005

Pic. 4: opened CUBE-Modul

Specification	Clamping range Ø in mm	A x B
SKINTOP® CUBE MODULE 20 x 20 ASI BUS	for ASI BUS Cords	20 x 20
SKINTOP® CUBE MODULE 20 x 20 blind	Placeholder blind / 1 - 3	20 x 20
SKINTOP® CUBE MODULE 20 x 20 small	4 - 6	20 x 20
SKINTOP® CUBE MODULE 20 x 20 large	6 - 9	20 x 20
SKINTOP® CUBE MODULE 40 x 40 blind	Placeholder blind	40 x 40
SKINTOP® CUBE MODULE 40 x 40 small	9 - 12	40 x 40
SKINTOP® CUBE MODULE 40 x 40 large	12 - 16	40 x 40



Pic. 5: SKINTOP® CUBE MODULE ASI BUS



Pic. 6: SKINTOP® CUBE MODULE 20x20 / 40x40

Technical characteristics:

Protection class	IP 64 acc. to EN 60529
Strain relief	Retention acc. to EN 50262
Temperature range	-20°C up to +80°C
Other characteristics	good chemical resistance (oil, cleaning agents,...), UV and ozone resistant, permanent protection against vibration, frame mountable from in- and outside, less parts through huge, variable clamping ranges.