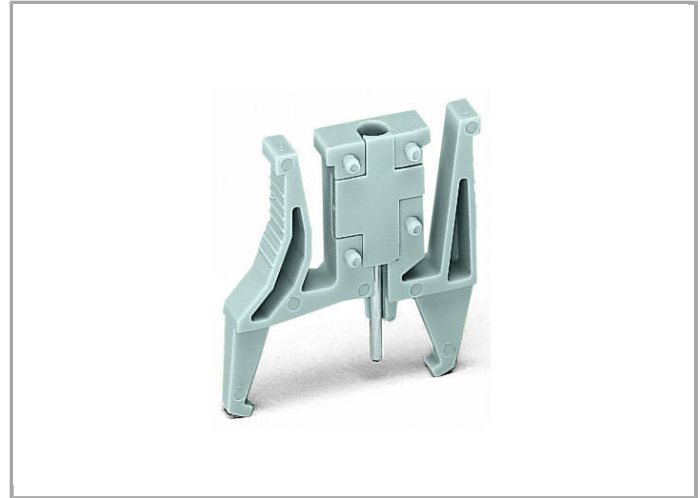


Data sheet | Item number: 260-404

Test plug module; with locking latches; modular; for 2-conductor terminal blocks; for 260 Series



www.wago.com/260-404



Data

Electrical data

Test voltage	48 V
Test current	0.5 A

Geometrical Data

Width	5 mm / 0.197 inch
-------	-------------------

Material Data

Color	gray
-------	------

Weight 2.15 g

Commercial data

Country of origin	DE
GTIN	4045454620660
Customs Tariff No.	85366990990
Product Group	9 (Std. Chassis Mt. Blocks)

Compatible products

check

	Item no.: 210-136 Test plug; 2 mm Ø; with 500 mm cable	www.wago.com/210-136
	Item no.: 210-137 Test plug; 2.3 mm Ø; with 500 mm cable	www.wago.com/210-137

Downloads

Documentation

Bid Text

260-404	Oct 10, 2017	DOC 24.6 kB	Download
---------	--------------	----------------	----------

Subject to changes.