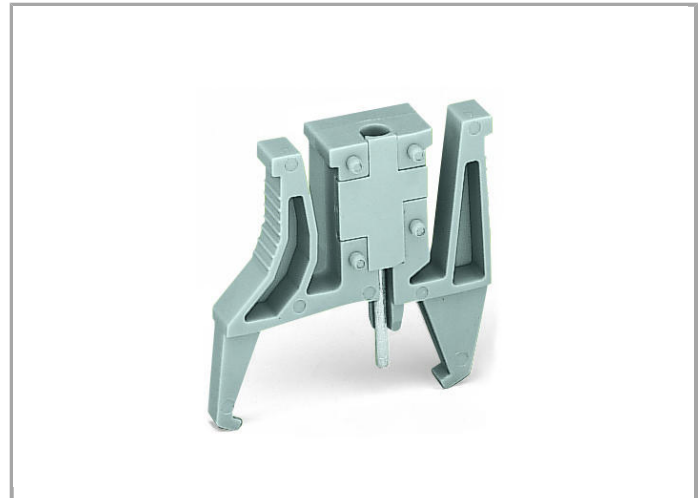


Data sheet | Item number: 260-405

Test plug module; with locking latches; modular; for 4-conductor terminal blocks; for 260 Series



[www.wago.com/260-405](http://www.wago.com/260-405)



Data

Electrical data

Test voltage	48 V
Test current	0.5 A

Geometrical Data

Width	8 mm / 0.315 inch
-------	-------------------

Material Data

Color	gray
Weight	2.196 g

## Commercial data

Country of origin	DE
GTIN	4050821868941
Customs Tariff No.	85369010000
Product Group	9 (Std. Chassis Mt. Blocks)

## Compatible products

### check

	<b>Item no.: 210-136</b> Test plug; 2 mm Ø; with 500 mm cable	<a href="http://www.wago.com/210-136">www.wago.com/210-136</a>
	<b>Item no.: 210-137</b> Test plug; 2.3 mm Ø; with 500 mm cable	<a href="http://www.wago.com/210-137">www.wago.com/210-137</a>

## Downloads

### Documentation

#### Bid Text

260-405	Oct 10, 2017	DOC 24.6 kB	Download
---------	--------------	----------------	----------

Subject to changes.