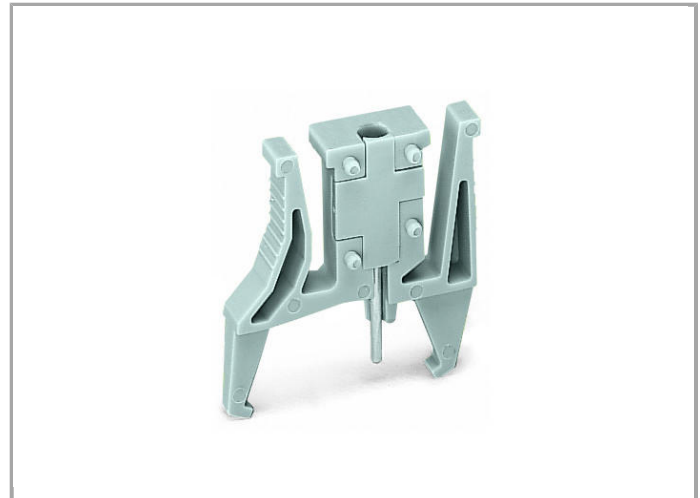
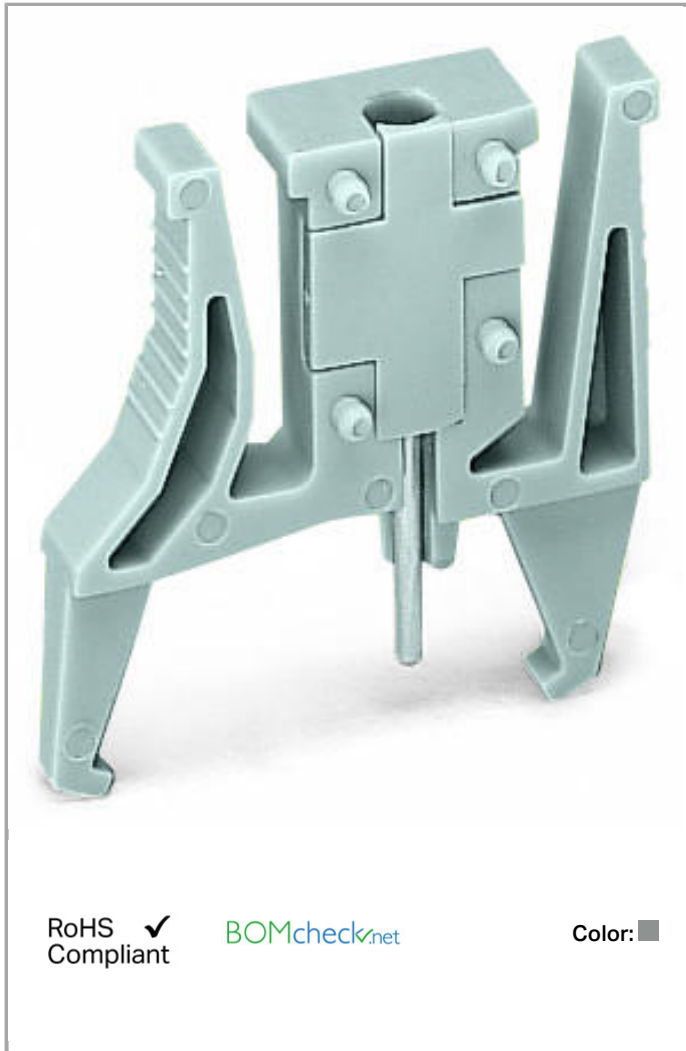


Data sheet | Item number: 261-404

Test plug module; with locking latches; modular; for 2-conductor terminal blocks; for 261 Series



www.wago.com/261-404



RoHS Compliant

[BOMcheck.net](https://www.bomcheck.net)

Color: ■

Data

Electrical data

Test voltage	48 V
Test current	0.5 A

Geometrical Data

Width	6 mm / 0.236 inch
-------	-------------------

Material Data

Color	gray
-------	------



Weight 2.3 g

Commercial data

Country of origin	DE
GTIN	4050821868958
Customs Tariff No.	85369010000
Product Group	9 (Std. Chassis Mt. Blocks)

Compatible products

check

	Item no.: 210-136 Test plug; 2 mm Ø; with 500 mm cable	www.wago.com/210-136
	Item no.: 210-137 Test plug; 2.3 mm Ø; with 500 mm cable	www.wago.com/210-137

Downloads

Documentation

Bid Text

261-404	Oct 11, 2017	DOC 25.1 kB	Download
---------	--------------	----------------	----------

smartDATA

CAD data

3D Download 261-404	URL	Download
---------------------	-----	----------

Subject to changes.