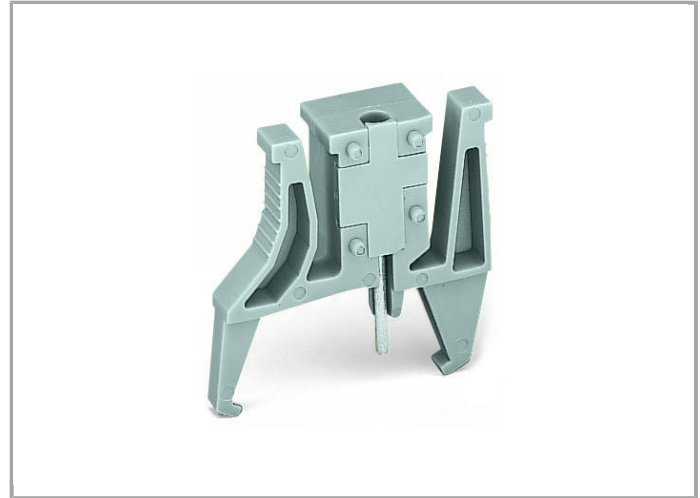
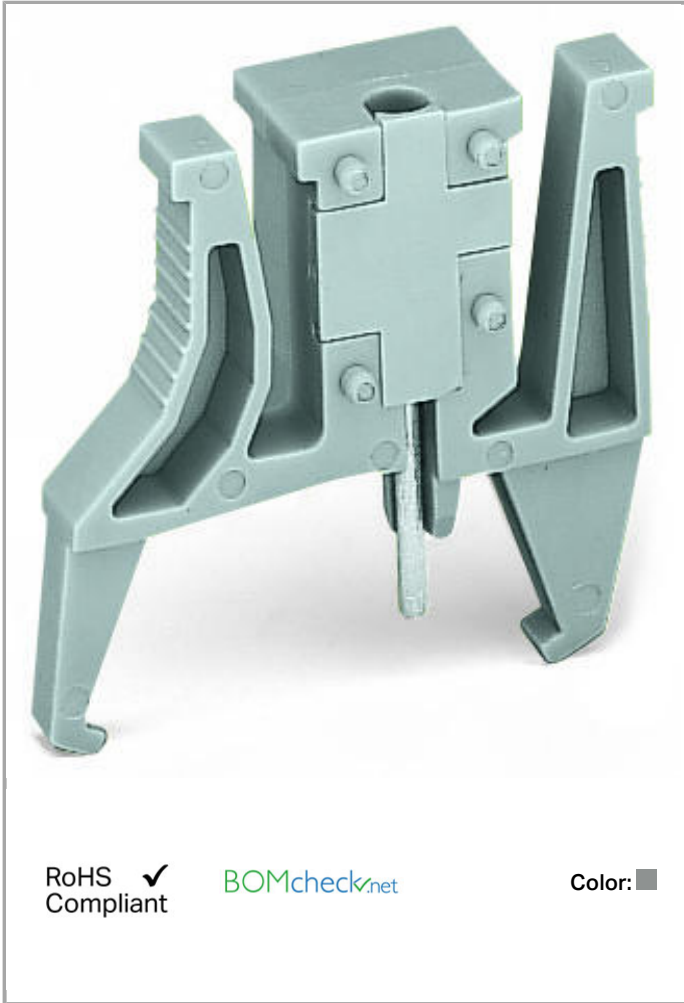


Data sheet | Item number: 261-405

Test plug module; with locking latches; modular; for 4-conductor terminal blocks; for 261 Series



www.wago.com/261-405



Data

Electrical data

Test voltage	48 V
Test current	0.5 A

Geometrical Data

Width	10 mm / 0.394 inch
-------	--------------------

Material Data

Color	gray
Weight	2.75 g

Commercial data

Country of origin	DE
GTIN	4050821868965
Customs Tariff No.	85369010000
Product Group	9 (Std. Chassis Mt. Blocks)

Compatible products

check

	Item no.: 210-136 Test plug; 2 mm Ø; with 500 mm cable	www.wago.com/210-136
	Item no.: 210-137 Test plug; 2.3 mm Ø; with 500 mm cable	www.wago.com/210-137

Downloads

Documentation

Bid Text

261-405	Oct 11, 2017	DOC 25.1 kB	Download
---------	--------------	----------------	----------

smartDATA

CAD data

3D Download 261-405	URL	Download
---------------------	-----	----------

Subject to changes.