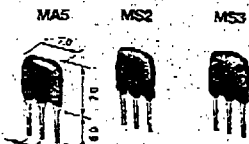
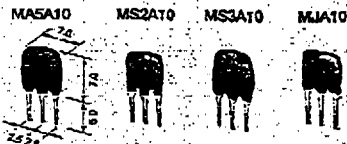


For FM-IF, 10.7MHz



(in mm)

Low-Loss Type A10 Series, 10.7MHz



(in mm)

Low-Profile C10 Series, 10.7MHz



(in mm)

Three-element SFT Series, 10.7MHz



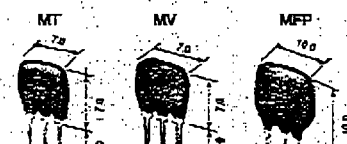
(in mm)

For DBS Receiver, 10.7MHz



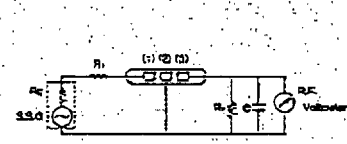
(in mm)

Narrow-Band Type, 10.7MHz



(in mm)

SFE10.7/SFT10.7 Series Test Circuit



R₁ = R₂ = 300 Ω
C = 10pF (including stray capacitance and input capacitance of R.F. voltmeter)

Minimum Quantity (order in sets only) : 500 pcs.

Part Number	3dB Bandwidth (kHz)	20dB Bandwidth (kHz) max.	Insertion Loss (dB) max.	Spurious (9-12MHz)(dB) min.
SFE10.7MA5	280±50	650(520)	6(4)	30(43)
SFE10.7MS2	230±50	600(420)	6(4)	40(45)
SFE10.7MS3	180±40	520(380)	7(4.5)	40(45)

Input/output impedance: 330 Ω

(): Typ. values

Part Number	3dB Bandwidth (kHz)	20dB Bandwidth (kHz) max.	Insertion Loss (dB) max.	Spurious (9-12MHz)(dB) min.
SFE10.7MASA10	280±50	590(480)	2.5±2.0	30(42)
SFE10.7MS2A10	230±40	520(410)	3.0±2.0	35(42)
SFE10.7MS3A10	180±40	470(370)	3.5±1.5	35(42)
SFE10.7MJA10	150±40	350(300)	4.5±2.0	35(42)

Input/output impedance: 330 Ω

Low loss and high selectivity.

(): Typ. values

Part Number	3dB Bandwidth (kHz)	20dB Bandwidth (kHz) max.	Insertion Loss (dB) max.	Spurious (9-12MHz)(dB) min.
SFE10.7MAS10	280±50	650(540)	3.0±2.0	30(47)
SFE10.7MS2C10	230±50	570(470)	3.0±2.0	40(49)
SFE10.7MS3C10	180±40	470(360)	3.5±2.0	35(47)
SFE10.7MJ10	150±40	360(300)	4.5±2.0	35(42)
SFE10.7MHC10	110±30	350(280)	7.0±2.0	30(38)

Input/output impedances: 330 Ω

Most suitable for a thin type and low profile set.

The performance is the same as that of conventional types.

(): Typ. values

Part Number	3dB Bandwidth (kHz)	40dB Bandwidth (kHz) max.	Insertion Loss (dB) max.	Spurious (9-12MHz)(dB) min.
SFT10.7MA5	280±50	700(630)	6±2	50(60)
SFT10.7MS2	230±40	650(580)	6±2	50(60)
SFT10.7MS3	180±40	550(500)	8±2	50(60)

Input/output impedance: 330 Ω

High selectivity is achieved by replacing with SFE10.7 series.

(): Typ. values

Part Number	3dB Bandwidth (kHz)	20dB Bandwidth (kHz) max.	Insertion Loss (dB) max.	Spurious (9-12MHz)(dB) min.
SFE10.7MA19	350 min. (450)	950(750)	3±2	20(30)
SFE10.7MA20-A	330±50	680(615)	4±2	30(40)
SFE10.7MHY-A	110±30	350(280)	7±2	30(38)

Input/output impedance: 330 Ω (MA20-A, MHY-A), 470 Ω (MA19)

Center frequency 10.52MHz type of SFE10.7MHY-A is also available.

(): Typ. values

Part Number	3dB Bandwidth (kHz) min.	20dB Bandwidth (kHz) max.	Insertion Loss (dB) max.	Spurious (9-12MHz)(dB) min.
SFE10.7MT	±25(80)	200(160)	6.5±2.5	30(55)
SFE10.7MV	±13(53)	135(109)	6.0±2.0	30(50)
SFE10.7MFP	20(38)	95(78)	6.0max.(3.4)	24(28)

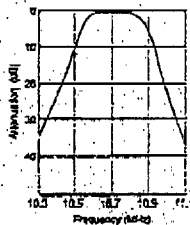
Input/output impedance: 330 Ω (MT, MV), 600 Ω (MFP)

Spurious range of SFE10.7MFP: 10.7±1MHz

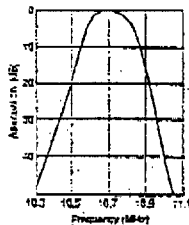
(): Typ. values

Frequency Characteristics

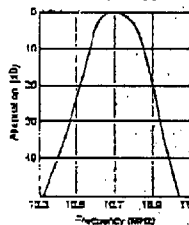
SFE10.7MA5



SFE10.7MS2



SFE10.7MS3



EMI SUPPRESSION FILTERS (EMIFIL®)
 MICROWAVE COMPONENTS
 FILTERS
 VIDEO EQUIPMENT
 FUNCTIONAL MODULES / HYBRID ICs
 POWER SUPPLIES
 SENSORS
 CAPACITORS
 THERMISTORS / RESISTORS
 COIL/SOLAY LINES / FERRITE CORES
 RESONATORS
 PIEZO PRODUCTS