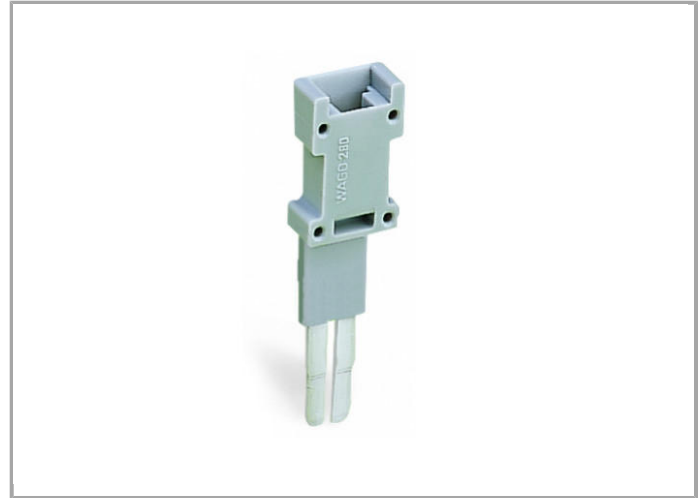


Data sheet | Item number: 280-418

Test plug module; modular; suitable for all WAGO 280 and 780 Series rail-mounted terminal blocks with jumper slots in the current bar

www.wago.com/280-418



RoHS 
Compliant

BOMcheck.net

Color: **Data****Electrical data**

Test voltage	400 V
Test current	6 A

Geometrical Data

Width	5 mm / 0.197 inch
-------	-------------------

Material Data

Color	gray
Fire load	0.019 MJ
Weight	1.8 g

Commercial data

Country of origin	DE
GTIN	4044918276313
Customs Tariff No.	85366990990
Product Group	1 (Rail Mounted Terminal Blocks)

Compatible products

check



Item no.: 210-136
Test plug; 2 mm Ø; with 500 mm cable

www.wago.com/210-136

Item no.: 210-137
Test plug; 2.3 mm Ø; with 500 mm cable

www.wago.com/210-137**Downloads****Documentation****Bid Text**

280-418	Oct 12, 2017	DOC 24.1 kB	Download
---------	--------------	----------------	----------



smartDATA

CAD data

3D Download 280-418

URL

Download

Subject to changes.