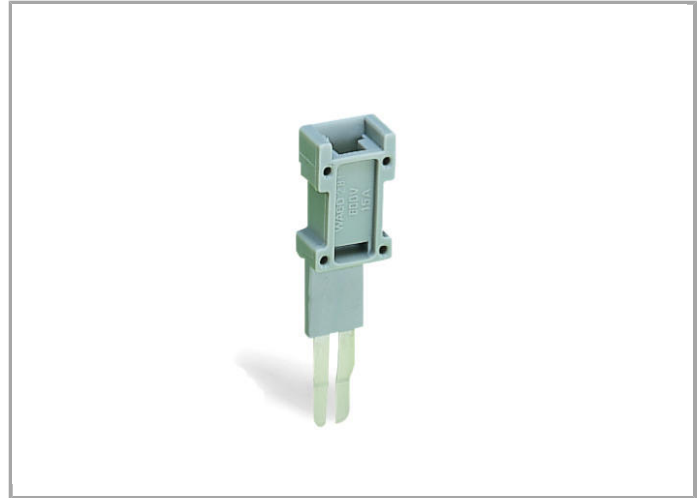


Data sheet | Item number: 281-418

Test plug module; modular; suitable for all WAGO 281, 776, 777 and 781 series rail-mounted terminal blocks with jumper slots in the current bar

www.wago.com/281-418



RoHS 
Compliant

BOMcheck.net

Color: **Data****Electrical data**

Test voltage	400 V
Test current	6 A

Geometrical Data

Width	6 mm / 0.236 inch
-------	-------------------

Material Data

Color	gray
Fire load	0.023 MJ
Weight	1.935 g

Commercial data

Country of origin	DE
GTIN	4044918276320
Customs Tariff No.	85366990990
Product Group	1 (Rail Mounted Terminal Blocks)

Compatible products

check



Item no.: 210-136
Test plug; 2 mm Ø; with 500 mm cable

www.wago.com/210-136

Item no.: 210-137
Test plug; 2.3 mm Ø; with 500 mm cable

www.wago.com/210-137**Downloads****Documentation****Bid Text**

281-418	Oct 12, 2017	DOC 24.1 kB	Download
---------	--------------	----------------	----------



Subject to changes.

WAGO Kontakttechnik GmbH & Co. KG
Hansastr. 27
32423 Minden
Phone: +49571 887-0 | Fax: +49571 887-169
Email: info.de@wago.com | Web: www.wago.com

Do you have any questions about our products?
We are always happy to take your call at +49 (571) 887-44222.