

SPECIFICATION

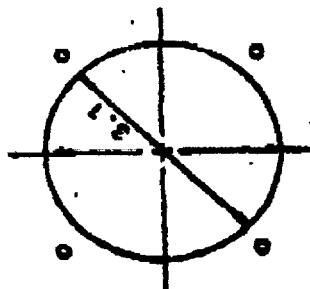
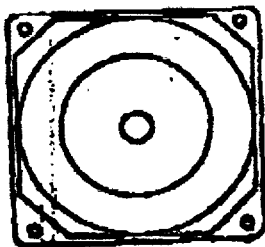
Model : SF23080AT-2002HSL

1. Standard Operation and Condition:
 - 1-1. Rated Voltage : 220/240 VAC 50/60Hz
 - 1-2. Operating Voltage Range : 185 - 245 VAC
 - 1-3. Starting Voltage : 185 VAC
 - 1-4. Rated Speed : 2350/2800 RPM
 - 1-5. Air Delivery (Max.) : 17/21 CFM
 - 1-6. Static Pressure (Max.) : 0.12/0.18 INCH-H2O
 - 1-7. Rated Current (Max.) : 0.07/0.07 AMP
 - 1-8. Input Power (Max.) : 14/13.5 WATT
 - 1-9. Noise Level (Max.) : 29/33 dBA
 - 1-10. Direction of Rotation : Clockwise Viewed from front face
 - 1-11. Motor Protection : Impedance Protected
 - 1-12. Operating Temperature : -10°C to +70°C
 - 1-13. Storage Temperature : -30°C to +75°C

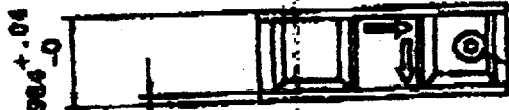
2. Material:
 - 2-1. Housing : Durable Die Cast Aluminum Frame
 - 2-2. Fan Blade : Thermoplastic PBT Blade of UL 94-V0
 - 2-3. Bearing : Oil-impregnated Sleeve Bearing
 - 2-4. Weight : 260 g

IN
28 APR 1995

3		DWG NO.	
2		SPEC.	
SUNSHINE ELECTRIC MACHINE			

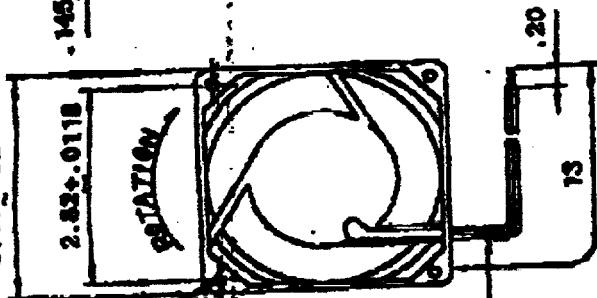


Ref = 04/24-002 F
B/N 537870



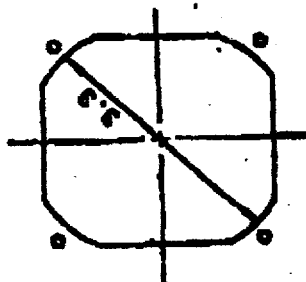
AIR FLOW
2 GROUND LUGS .154 DIA

3.15±.02



4 HOLES EACH SIDE
.169 DIA TYPE

2 WIRES



REV	1	DATE	NOTE	DWG NO.	
				SPEC.	
				SUNONWEALTH ELECTRIC MACHINE INDUSTRY CO., LTD.	

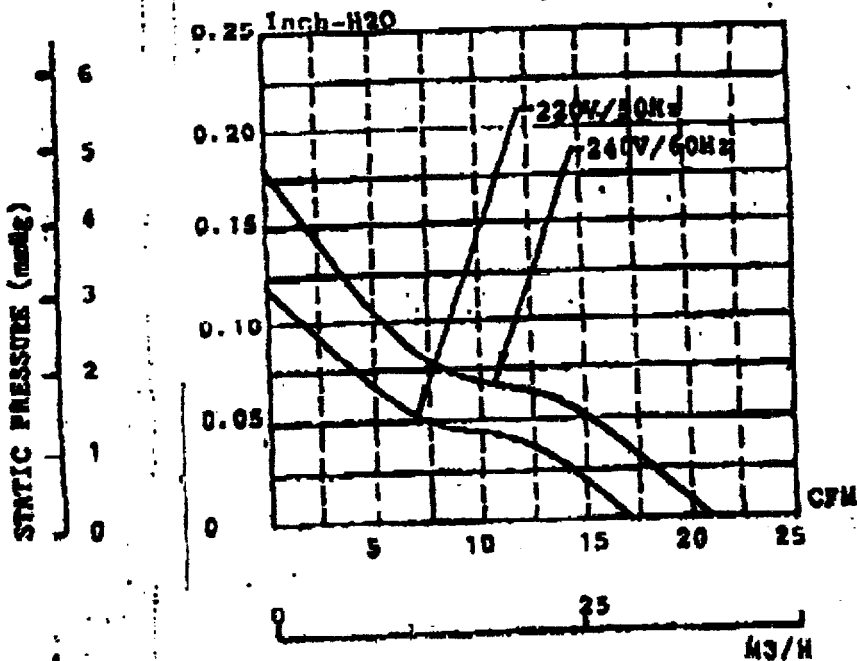
ref 04/28-002F

B/N 537870

MODEL : SF23080AT-2082HSL

VOLTAGE (VAC)	220V 50Hz	240V 60Hz	
CURRENT (AMP)	0.07	0.07	
INPUT POWER (WATT)	14	13.5	
SPEED (RPM)	2350	2800	

PERFORMANCE CURVES



DWG NO.

SPEC.

SUNONVEALTH ELECTRIC MACHINE
INDUSTRY CO., LTD.

DATE

NOTE

REV

3
2
1