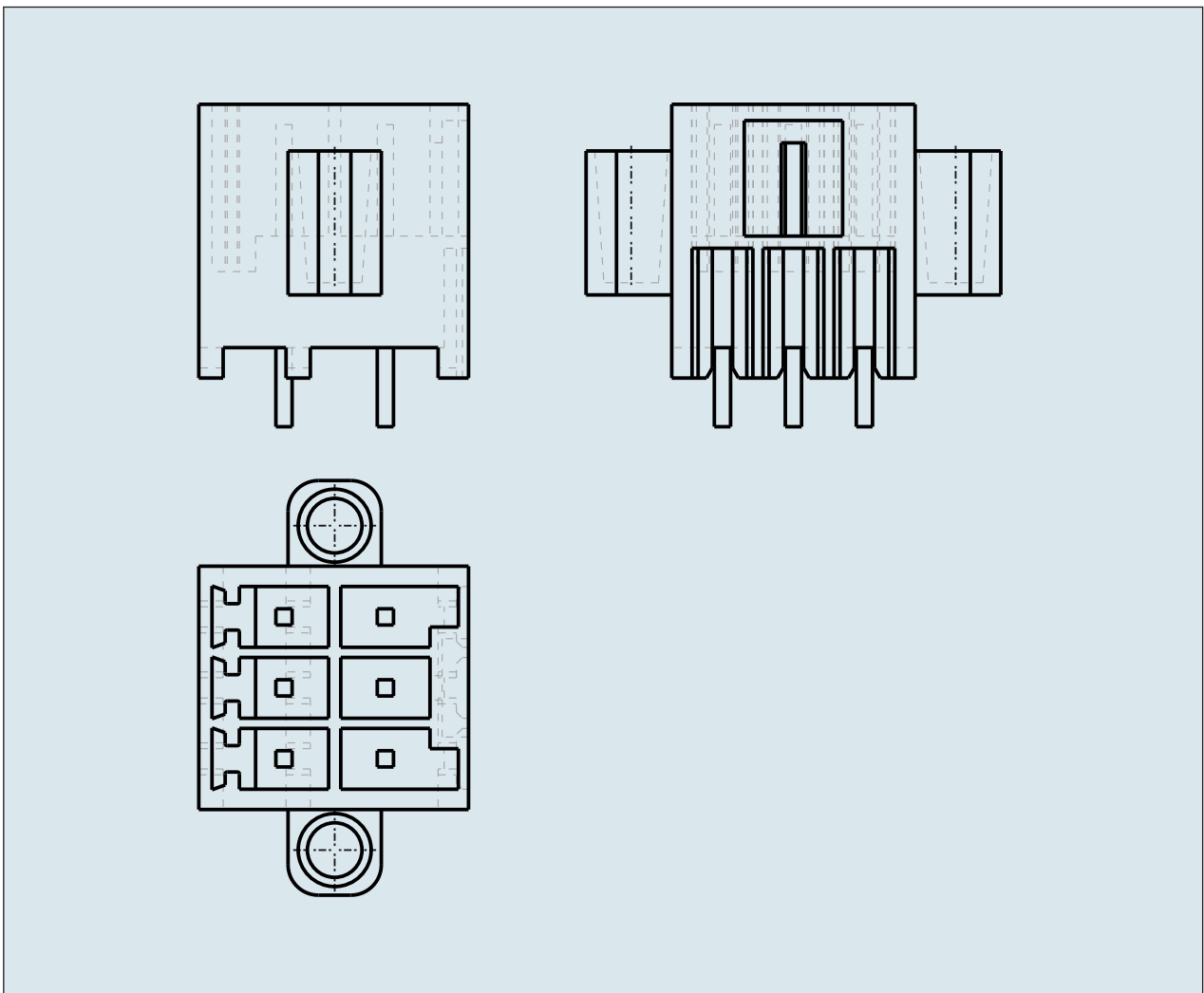
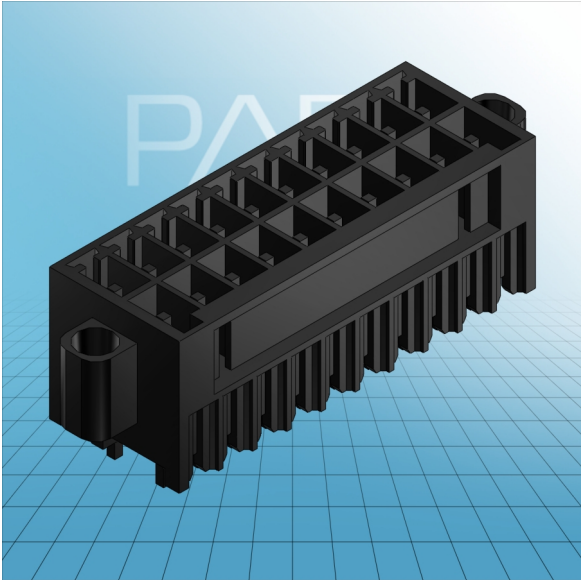


**HEADER STRAIGHT SOLDER PIN0.
8x0.8 MM WITH THREADED FLANGES
PIN SPACING 3.5 MM / 0.138 IN 100%
PROTECTED AGAINST MISMATING**



**HEADER STRAIGHT SOLDER PIN0.
8x0.8 MM WITH THREADED FLANGES
PIN SPACING 3.5 MM / 0.138 IN 100%
PROTECTED AGAINST MISMATING
713-1403/117-000 TO 713-1418/117-000**

ITEM-NO. (ITEM-NO.)	713-1410/117-000
Measured voltage (Measured voltage / V)	160
Measured shock voltage (Measured shock voltage / kV)	2.5
Pollution degree (Pollution degree)	2
Current intensity (Current intensity / A)	10
RM (PIN SPACING / mm)	3.5
P (NO. OF POLES)	20
Height (Height / mm)	13.5
Width (Width / mm)	45.1
Depth (Depth / mm)	13.3
No. of connection Points (No. of connection Points)	20
No. of potentials (No. of potentials)	20
COLOR (COLOR)	schwarz
Comment (Comment)	$L = ((\text{No. of poles} / 2) - 1) \times \text{Pin Spacing} + 13.6$ mm
Dimensions (Dimensions)	1.2 +0.1 mm