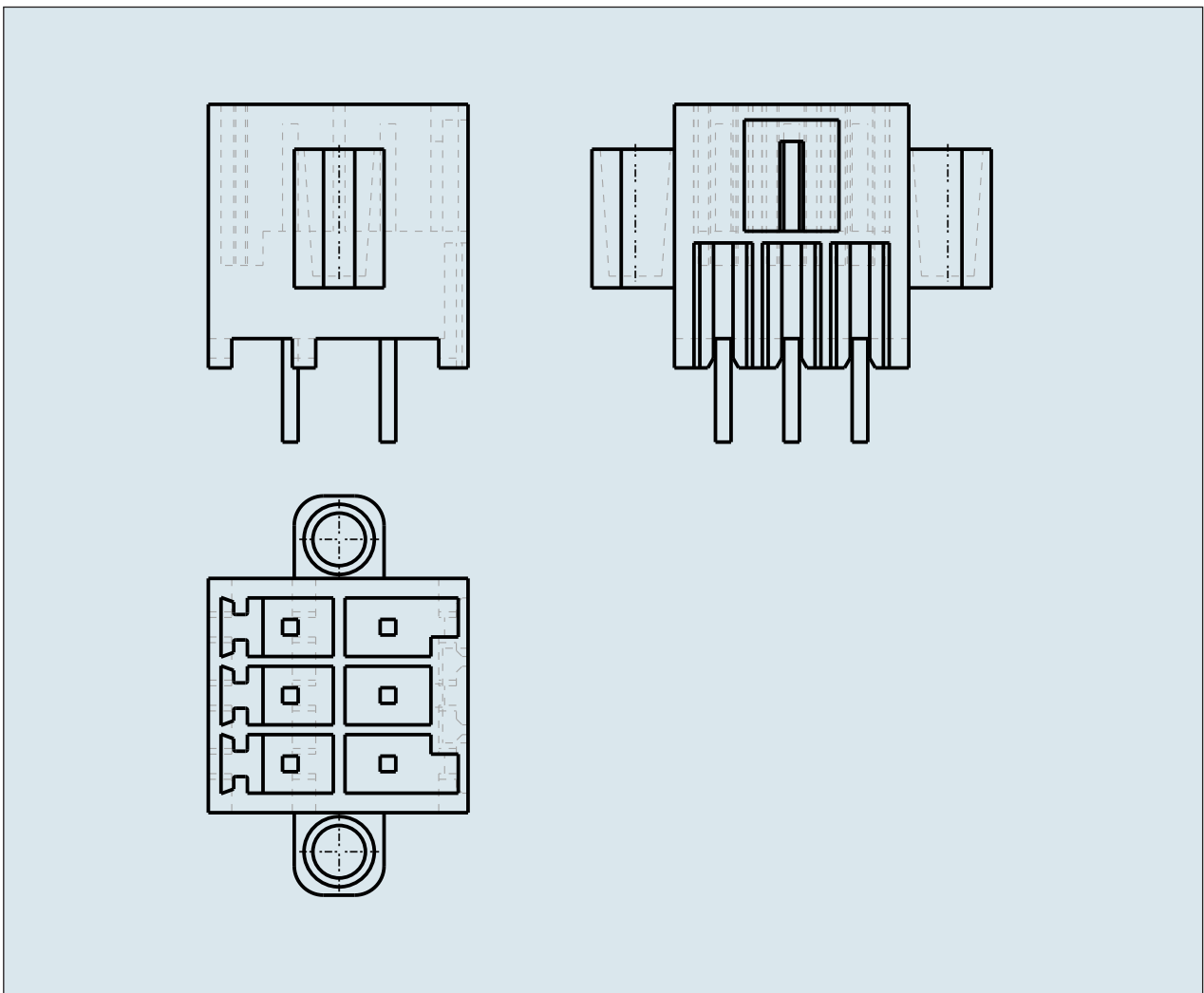
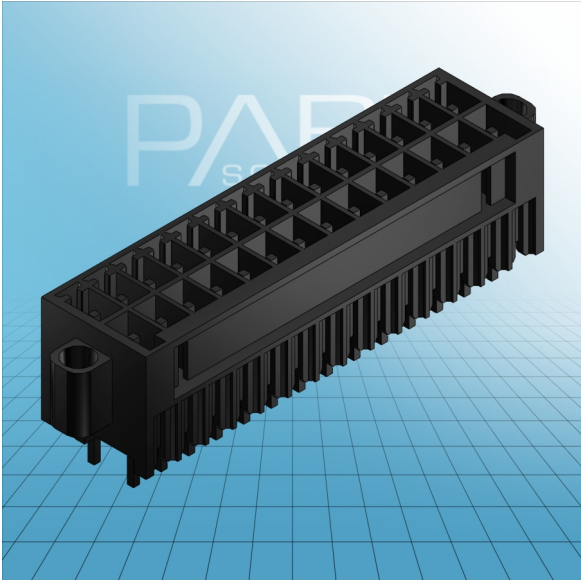


**HEADER STRAIGHT SOLDER PIN0.
8x0.8 MM WITH THREADED FLANGES
PIN SPACING 3.5 MM / 0.138 IN 100%
PROTECTED AGAINST MISMATING**



**HEADER STRAIGHT SOLDER PIN0.
8x0.8 MM WITH THREADED FLANGES
PIN SPACING 3.5 MM / 0.138 IN 100%
PROTECTED AGAINST MISMATING
713-1403/107-000 TO 713-1418/107-000**

ITEM-NO. (ITEM-NO.)	713-1414/107-000
Measured voltage (Measured voltage / V)	160
Measured shock voltage (Measured shock voltage / kV)	2.5
Pollution degree (Pollution degree)	2
Current intensity (Current intensity / A)	10
RM (PIN SPACING / mm)	3.5
P (NO. OF POLES)	28
Height (Height / mm)	13.5
Width (Width / mm)	59.1
Depth (Depth / mm)	13.3
No. of connection Points (No. of connection Points)	28
No. of potentials (No. of potentials)	28
COLOR (COLOR)	schwarz
Comment (Comment)	$L = ((\text{No. of poles} / 2) - 1) \times \text{Pin Spacing} + 13.6 \text{ mm}$
Dimensions (Dimensions)	1.1 +0.1 mm