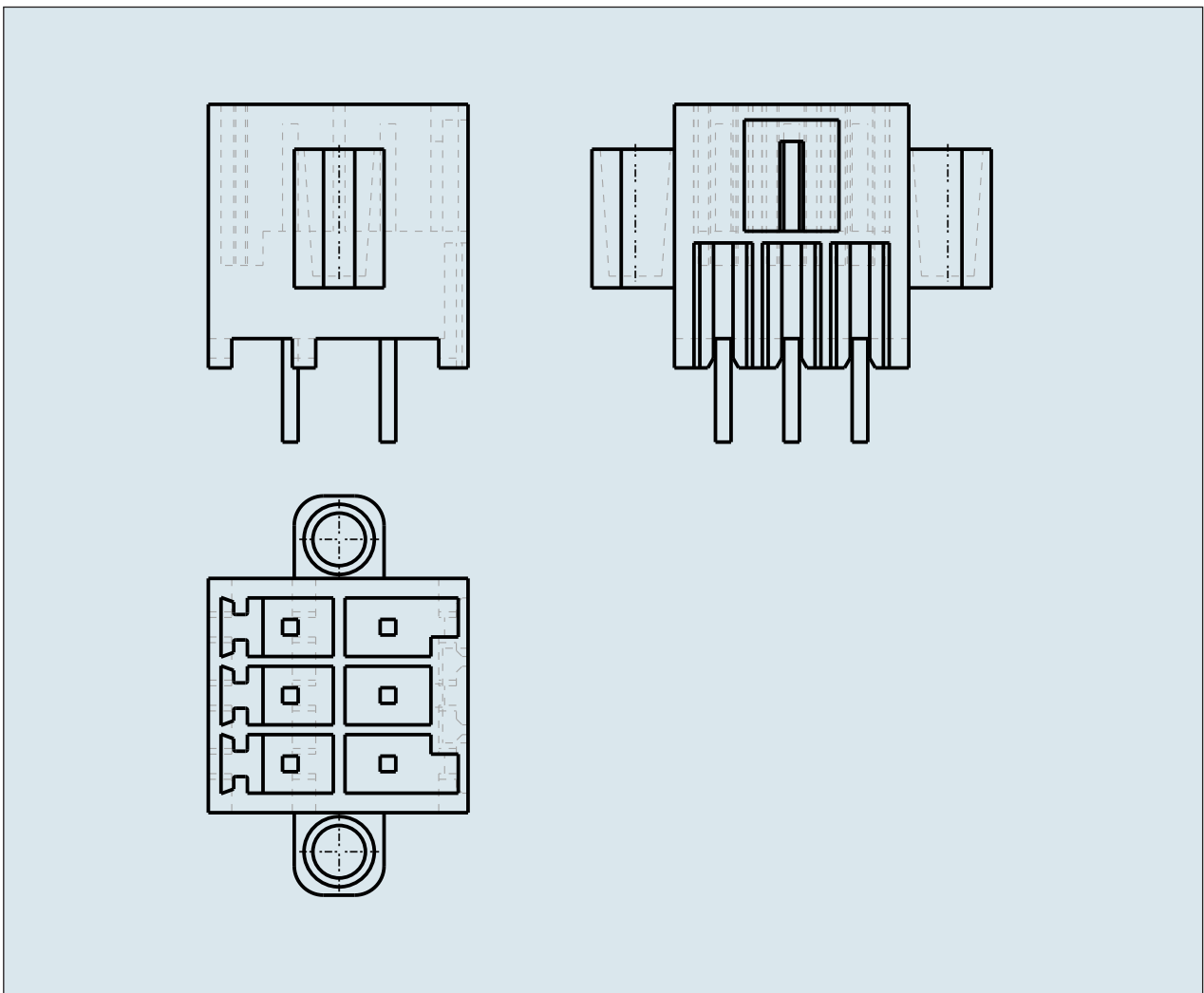
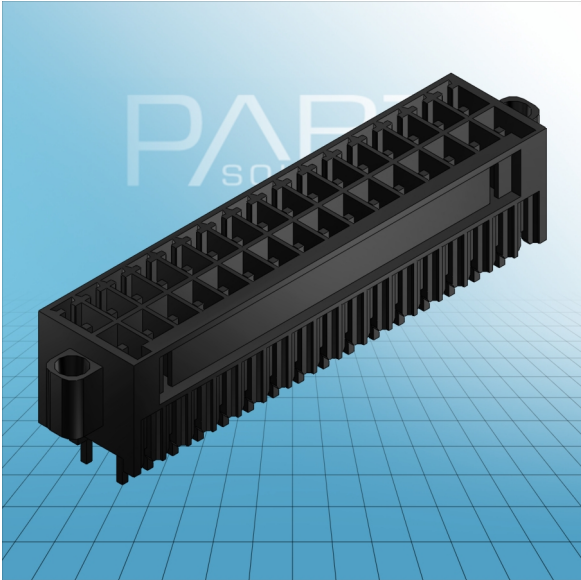


**HEADER STRAIGHT SOLDER PIN0.
8x0.8 MM WITH THREADED FLANGES
PIN SPACING 3.5 MM / 0.138 IN 100%
PROTECTED AGAINST MISMATING**



**HEADER STRAIGHT SOLDER PIN0.
8x0.8 MM WITH THREADED FLANGES
PIN SPACING 3.5 MM / 0.138 IN 100%
PROTECTED AGAINST MISMATING
713-1403/107-000 TO 713-1418/107-000**

| | |
|---|---|
| ITEM-NO. (ITEM-NO.) | 713-1416/107-000 |
| Measured voltage (Measured voltage / V) | 160 |
| Measured shock voltage (Measured shock voltage / kV) | 2.5 |
| Pollution degree (Pollution degree) | 2 |
| Current intensity (Current intensity / A) | 10 |
| RM (PIN SPACING / mm) | 3.5 |
| P (NO. OF POLES) | 32 |
| Height (Height / mm) | 13.5 |
| Width (Width / mm) | 66.1 |
| Depth (Depth / mm) | 13.3 |
| No. of connection Points (No. of connection Points) | 32 |
| No. of potentials (No. of potentials) | 32 |
| COLOR (COLOR) | schwarz |
| Comment (Comment) | $L = ((\text{No. of poles} / 2) - 1) \times \text{Pin Spacing} + 13.6 \text{ mm}$ |
| Dimensions (Dimensions) | 1.1 +0,1 mm |