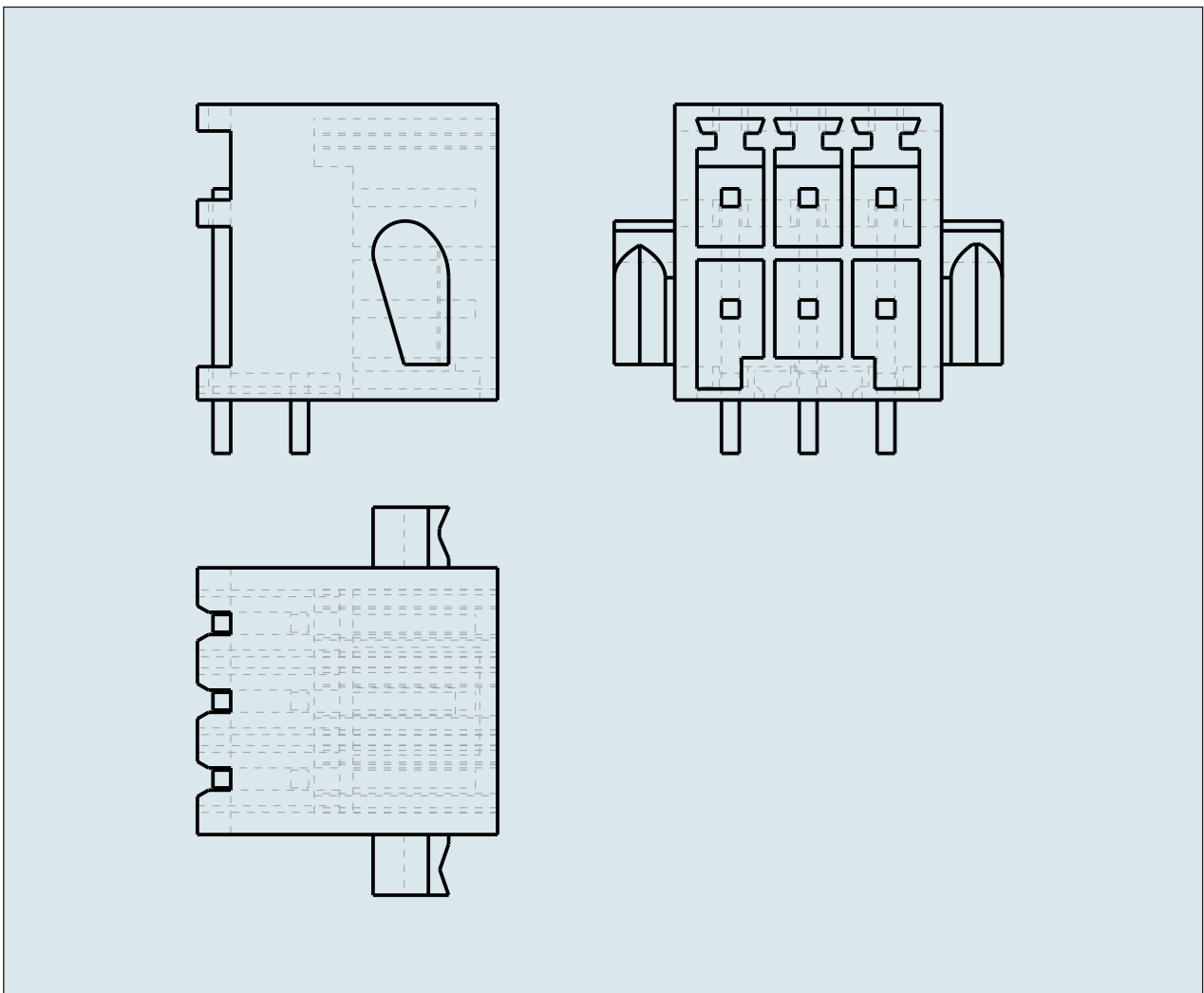
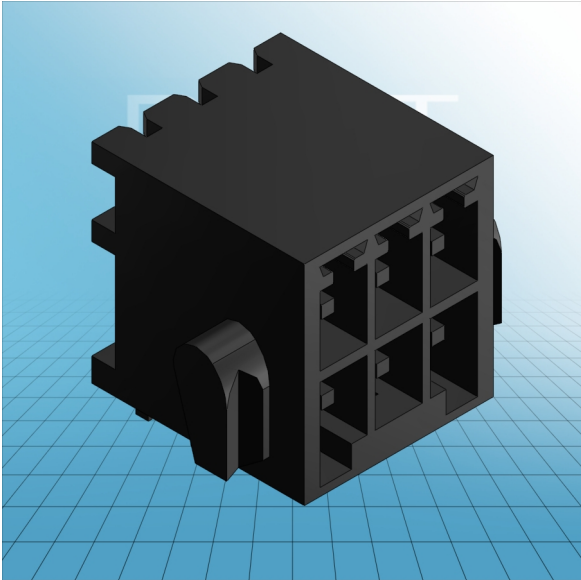


HEADER RIGHT ANGLE SOLDER PIN
0.8x0.8 MM with ejector receptacles
PIN SPACING 3.5 MM / 0.138 IN 100%
PROTECTED AGAINST MISMATING



HEADER RIGHT ANGLE SOLDER PIN
0.8x0.8 MM with ejector receptacles
PIN SPACING 3.5 MM / 0.138 IN 100%
PROTECTED AGAINST MISMATING
713-1423/116-000 TO 713-1438/116-000

ITEM-NO. (ITEM-NO.)	713-1423/116-000
Measured voltage (Measured voltage / V)	160
Measured shock voltage (Measured shock voltage / kV)	2.5
Pollution degree (Pollution degree)	2
Current intensity (Current intensity / A)	10
RM (PIN SPACING / mm)	3.5
P (NO. OF POLES)	6
Height (Height / mm)	13.3
Width (Width / mm)	17.6
Depth (Depth / mm)	13.5
No. of connection Points (No. of connection Points)	6
No. of potentials (No. of potentials)	6
COLOR (COLOR)	schwarz
Comment (Comment)	$L = ((\text{No. of poles} / 2) - 1) \times \text{Pin Spacing} + 10.6 \text{ mm}$
Dimensions (Dimensions)	1.2 +0.1 mm