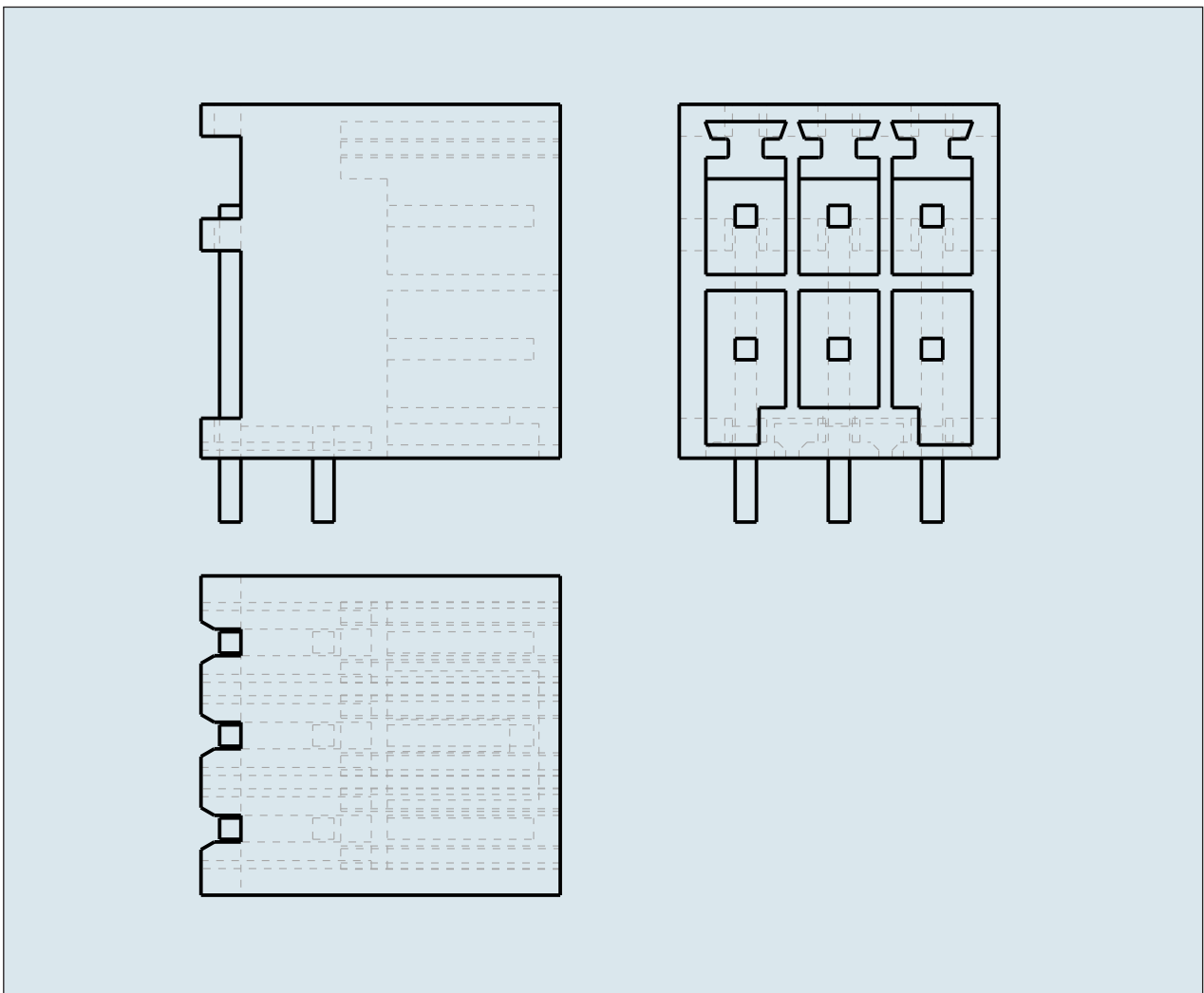
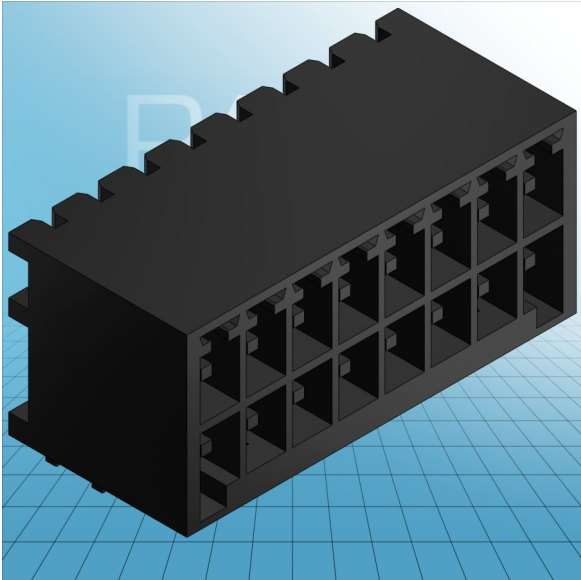


HEADER RIGHT ANGLE SOLDER PIN
0.8x0.8 MM PIN SPACING 3.5 MM / 0.
138 IN 100% PROTECTED AGAINST
MISMATING



**HEADER RIGHT ANGLE SOLDER PIN
0.8x0.8 MM PIN SPACING 3.5 MM / 0.
138 IN 100% PROTECTED AGAINST
MISMATING
713-1423/105-000 TO 713-1438/105-000**

| | |
|---|--|
| ITEM-NO. (ITEM-NO.) | 713-1428/105-000 |
| Measured voltage (Measured voltage / V) | 160 |
| Measured shock voltage (Measured shock voltage / kV) | 2.5 |
| Pollution degree (Pollution degree) | 2 |
| Current intensity (Current intensity / A) | 10 |
| RM (PIN SPACING / mm) | 3.5 |
| P (NO. OF POLES) | 16 |
| Height (Height / mm) | 13.3 |
| Width (Width / mm) | 29.5 |
| Depth (Depth / mm) | 13.5 |
| No. of connection Points (No. of connection Points) | 16 |
| No. of potentials (No. of potentials) | 16 |
| COLOR (COLOR) | schwarz |
| Comment (Comment) | $L = ((\text{No. of poles} / 2) - 1) \times \text{Pin Spacing} + 5.2 \text{ mm}$ |
| Dimensions (Dimensions) | 1.2 +0.1 mm |