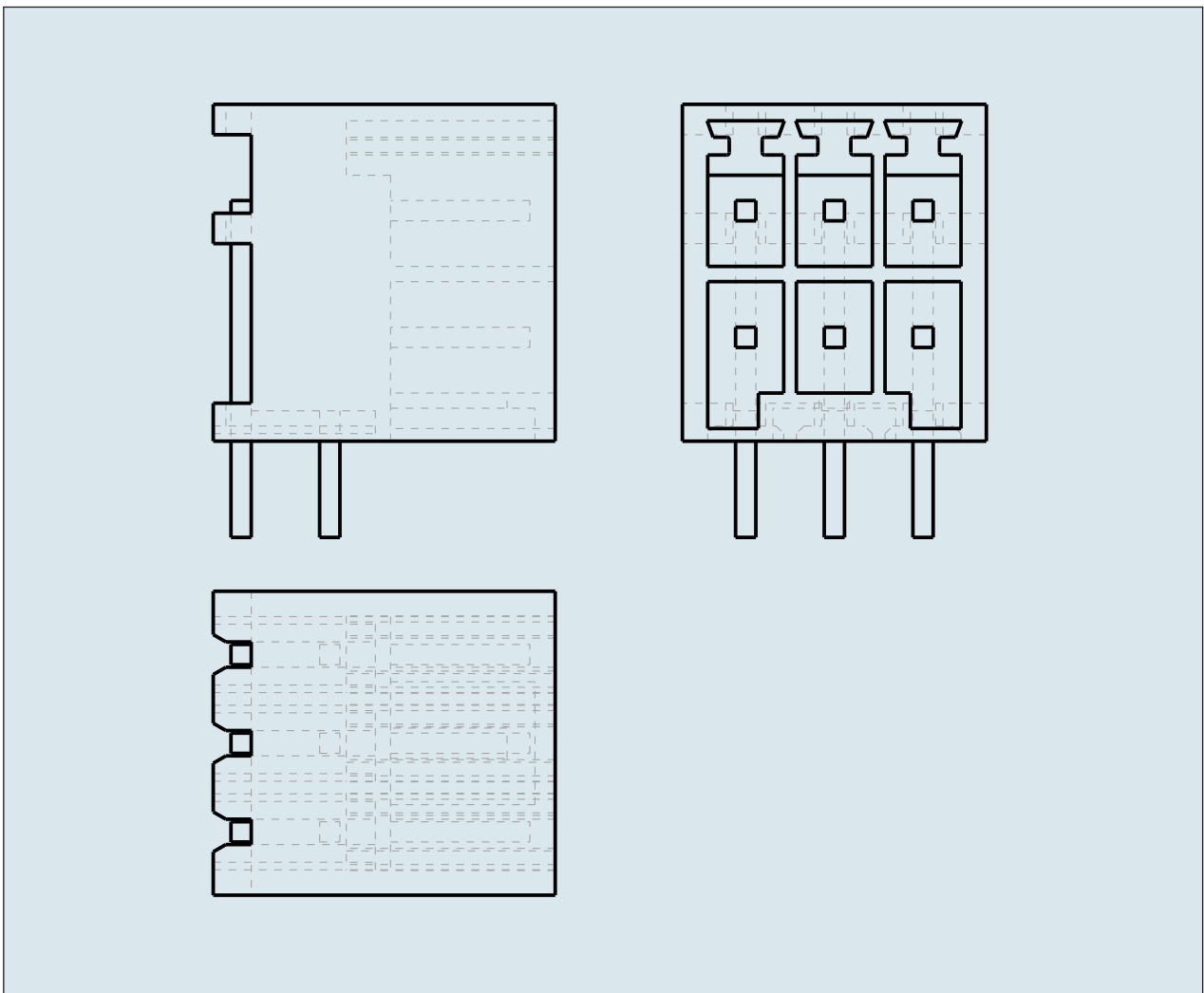
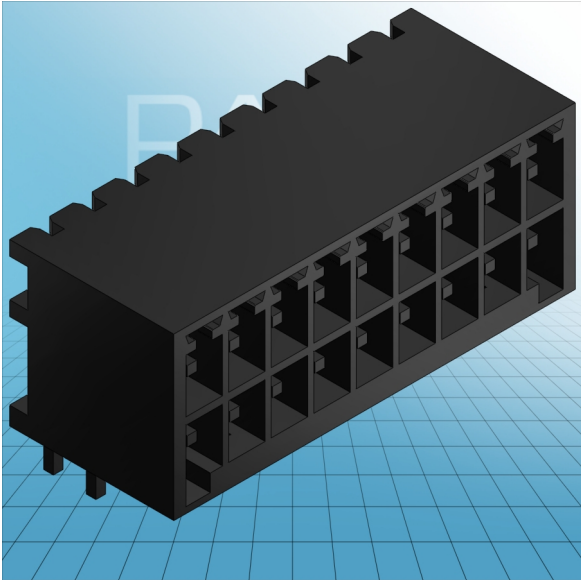


**HEADER RIGHT ANGLE SOLDER PIN**  
**0.8x0.8 MM PIN SPACING 3.5 MM / 0.**  
**138 IN 100% PROTECTED AGAINST**  
**MISMATING**



**HEADER RIGHT ANGLE SOLDER PIN  
0.8x0.8 MM PIN SPACING 3.5 MM / 0.  
138 IN 100% PROTECTED AGAINST  
MISMATING  
713-1423 TO 713-1438**

<b>ITEM-NO. (ITEM-NO.)</b>	713-1429
<b>Measured voltage (Measured voltage / V)</b>	160
<b>Measured shock voltage (Measured shock voltage / kV)</b>	2.5
<b>Pollution degree (Pollution degree)</b>	2
<b>Current intensity (Current intensity / A)</b>	10
<b>RM (PIN SPACING / mm)</b>	3.5
<b>P (NO. OF POLES)</b>	18
<b>Height (Height / mm)</b>	13.3
<b>Width (Width / mm)</b>	33
<b>Depth (Depth / mm)</b>	13.5
<b>No. of connection Points (No. of connection Points)</b>	18
<b>No. of potentials (No. of potentials)</b>	18
<b>COLOR (COLOR)</b>	schwarz
<b>Comment (Comment)</b>	$L = ((\text{No. of poles} / 2) - 1) \times \text{Pin Spacing} + 5 \text{ mm}$
<b>Dimensions (Dimensions)</b>	1.1 +0.1 mm