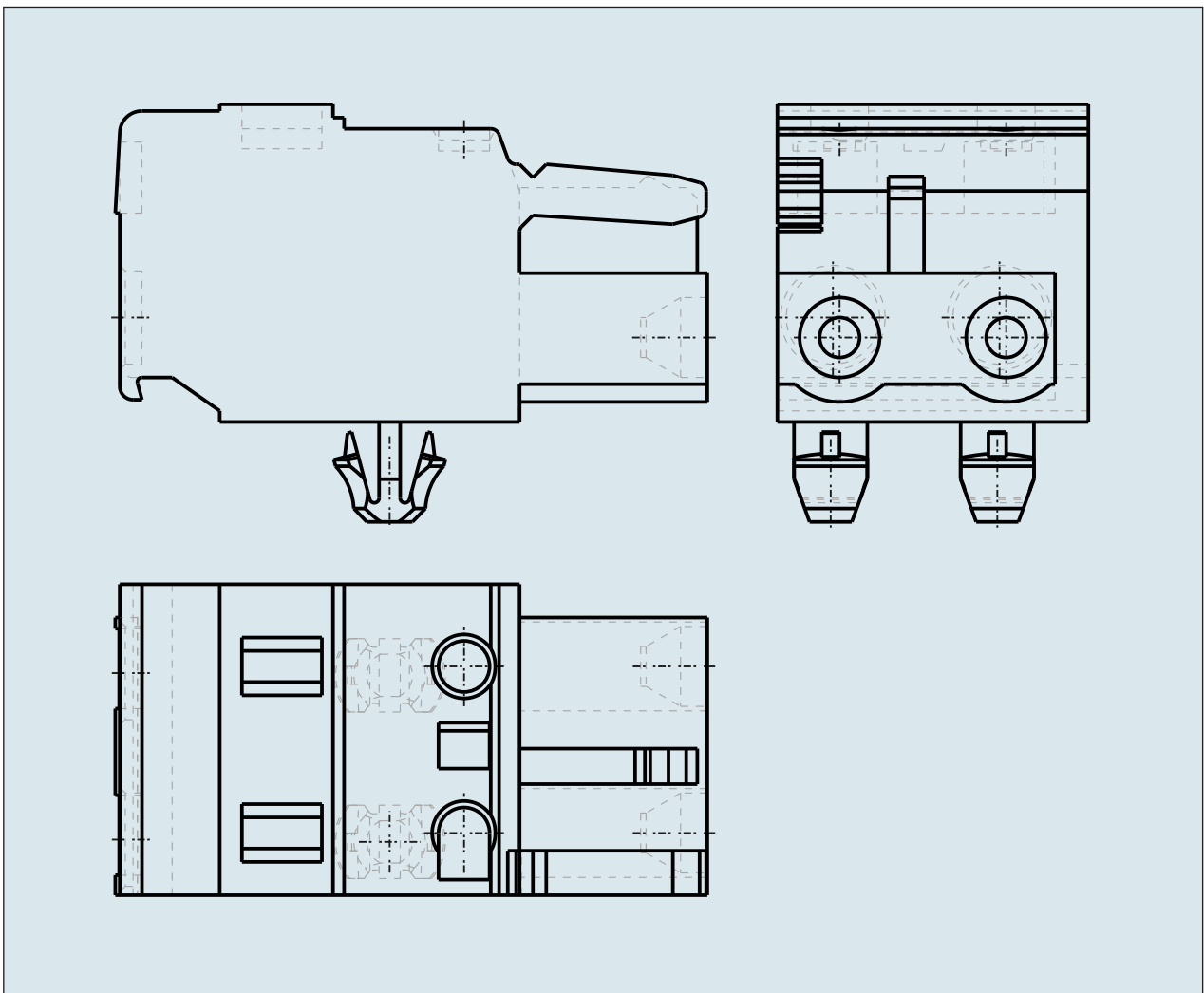
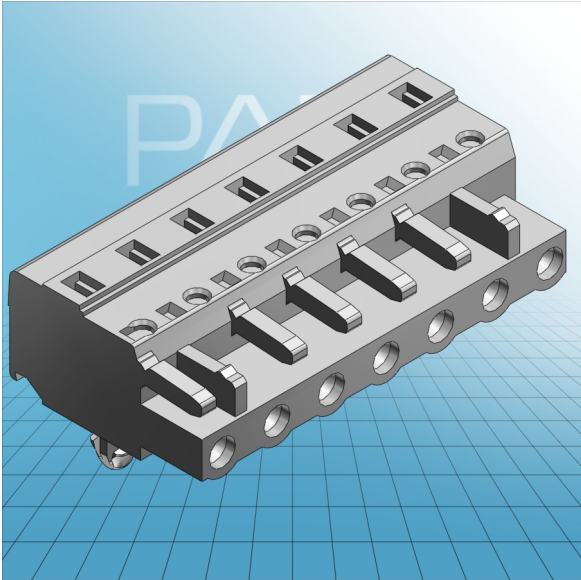


**FEMALE PLUG WITH SNAP-IN
MOUNTING FOOT PIN SPACING 7.5
MM / 0.295 IN 100% PROTECTED
AGAINST MISMATING**



**FEMALE PLUG WITH SNAP-IN
MOUNTING FOOT PIN SPACING 7.5
MM / 0.295 IN 100% PROTECTED
AGAINST MISMATING
721-202/008-000 TO 721-212/008-000**

| | |
|---|--|
| ITEM-NO. (ITEM-NO.) | 721-207/008-000 |
| Cross section1 (Cross section / mm²) | 0.08 - 2.5 |
| Cross section2 (Cross section / AWG) | 28 - 12 |
| Strip length (Strip length / mm) | 8 - 9 |
| Measured voltage (Measured voltage / V) | 630 |
| Measured shock voltage (Measured shock voltage / kV) | 6 |
| Pollution degree (Pollution degree) | 2 |
| Current intensity (Current intensity / A) | 16 |
| RM (PIN SPACING / mm) | 7.5 |
| P (NO. OF POLES) | 7 |
| Height (Height / mm) | 14.3 |
| Width (Width / mm) | 51.5 |
| Depth (Depth / mm) | 26.45 |
| No. of connection Points (No. of connection Points) | 7 |
| No. of potentials (No. of potentials) | 7 |
| COLOR (COLOR) | lichtgrau |
| WEIGHT (WEIGHT / g) | 14.795 |
| Comment (Comment) | L = (No. of poles - 1) x Pin Spacing + 5 mm + 1,5 mm |