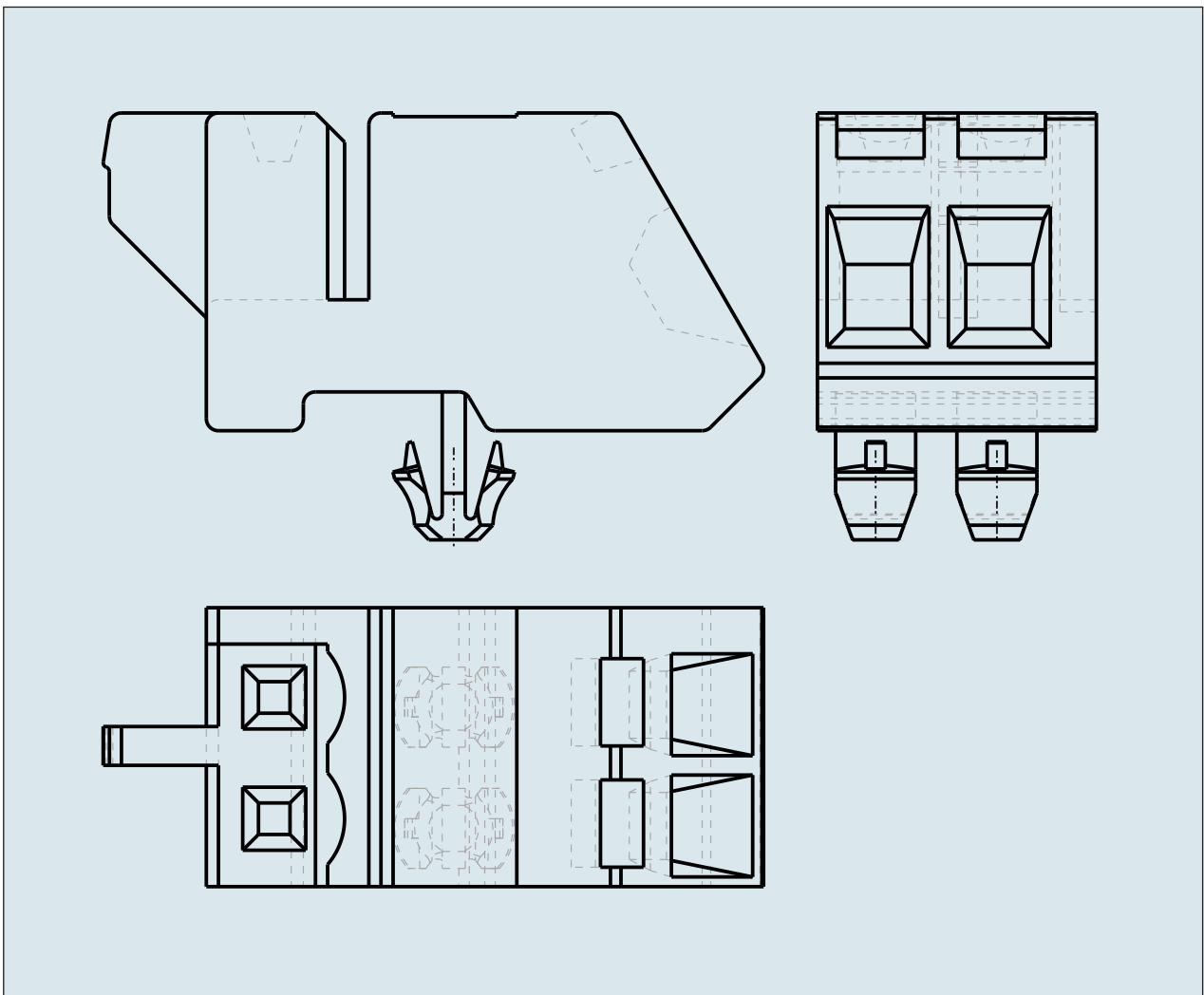
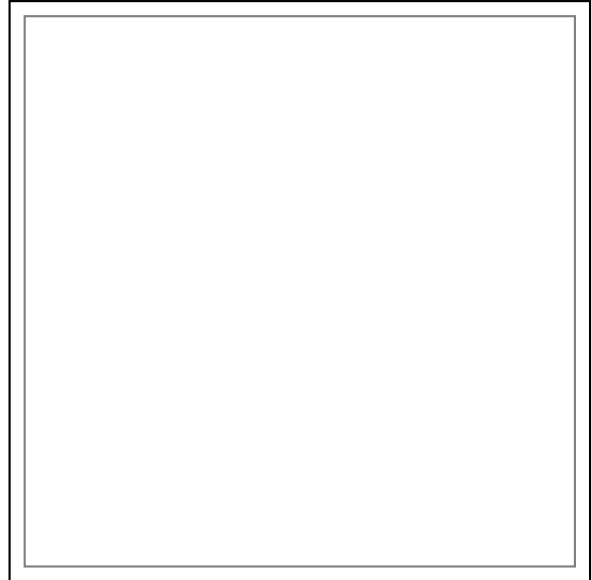
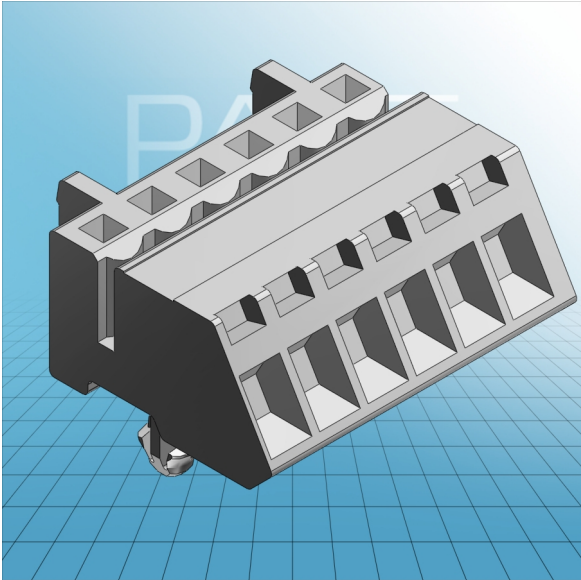


**ANGLED FEMALE PLUG WITH SNAP-
IN MOUNTING FOOT PIN SPACING 5
MM / 0.197 IN 100% PROTECTED
AGAINST MISMATING**



**ANGLED FEMALE PLUG WITH SNAP-
IN MOUNTING FOOT PIN SPACING 5
MM / 0.197 IN 100% PROTECTED
AGAINST MISMATING**
721-302/008-000 TO 721-320/008-000

ITEM-NO. (ITEM-NO.)	721-306/008-000
Cross section1 (Cross section / mm²)	0.08 - 2.5
Cross section2 (Cross section / AWG)	28 - 12
Strip length (Strip length / mm)	8 - 9
Measured voltage (Measured voltage / V)	320
Measured shock voltage (Measured shock voltage / kV)	4
Pollution degree (Pollution degree)	2
Current intensity (Current intensity / A)	12
RM (PIN SPACING / mm)	5
P (NO. OF POLES)	6
Height (Height / mm)	13.1
Width (Width / mm)	31.5
Depth (Depth / mm)	23
No. of connection Points (No. of connection Points)	6
No. of potentials (No. of potentials)	6
COLOR (COLOR)	lichtgrau
Comment (Comment)	L = (No. of poles x Pin Spacing) + 1,5 mm