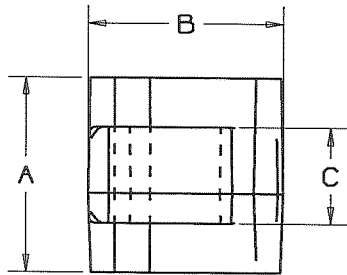
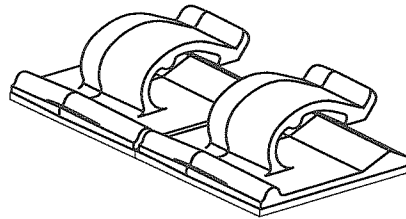
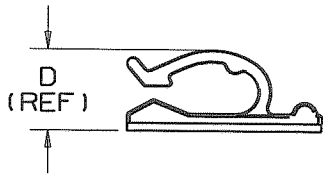


THIS COPY IS PROVIDED ON A RESTRICTED BASIS AND IS NOT TO BE USED IN ANY WAY DETRIMENTAL TO THE INTERESTS OF PANDUIT CORPORATION.

PANDUIT PART NUMBER	DIMENSIONS				MAXIMUM CABLE DIA. in. (mm)	ADHESIVE BACKING	WEIGHT lbs/100 pcs (g)/100 pcs
	A	B	C	D			
ACC38-A	1.00	1.00	0.49	0.40	0.380 (9.6)	RUBBER	0.40 (181)
ACC38-AT	(25.4)	(25.4)	(12.4)	(10.2) (REF)		ACRYLIC	



NOTES:
1. SEE CURRENT PRICE SHEET FOR PART NUMBER SUFFIX DESIGNATION FOR PACKAGE SIZE.



TWO UP CONFIGURATION
(AS SUPPLIED TO CUSTOMER)

CAD FILENAME/LAYERS		G03597BB_DC_GB0239DY/00B	
PANDUIT CORP.		TINLEY PARK, ILLINOIS	
ACC38-xx ADHESIVE CORD CLIP			
UNLESS OTHERWISE SPECIFIED, DIMENSIONAL TOLERANCES ARE: (.X) ±0.05 (1.3) (.XXX) ±0.010 (0.25) (.XX) ±0.02 (.5) ANGLES ±5°		UNLESS OTHERWISE SPECIFIED, ALL DIMENSIONS ARE GIVEN IN INCHES, THIRD ANGLE PROJECTION	
DRAWN BY MLD	MAT'L:	SCALE FULL	
DATE 8-8-96	NYLON 6/6 COLOR: NATURAL	DRAWING NO.	DWG SIZE
CHK'D KLN		GB0239DY	A

REV	DATE	BY	CHK	DESCRIPTION	ECN	R	CUST	SUP
00B	6/23/08	DJSM	<i>[Signature]</i>	REVISED AND RE-RELEASESD TO TEAMCENTER REV HISTORY; TABULARIZED DIMS, REMOVED .45 AND .27 DIMS, REVISED .38 DIM TO INCLUDE TAPE, TIGHTENED TOLERANCES, REMOVED APPLICATION, TAPE, AND WARRANTY NOTES	GB0239DY	00B	<i>KLN</i>	
1	10/30/00	CGSM		CHANGED DIMS TO REF, REMOVED .03 DIM, CHANGED APPLICATION NOTE 1	GB0239DY	1		
R	8-8-96	MLD		INITIAL RELEASE	GB0239DY	R		