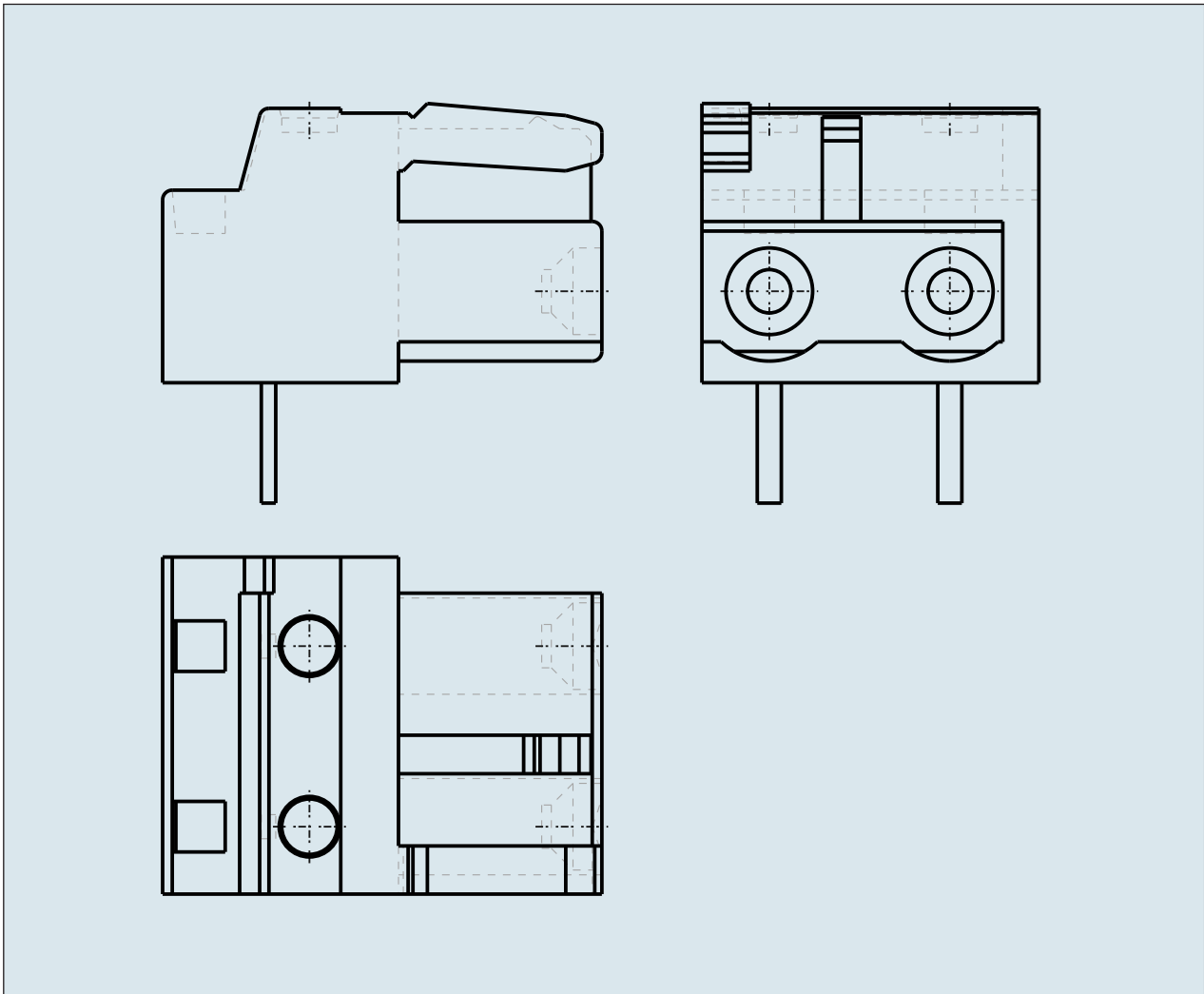
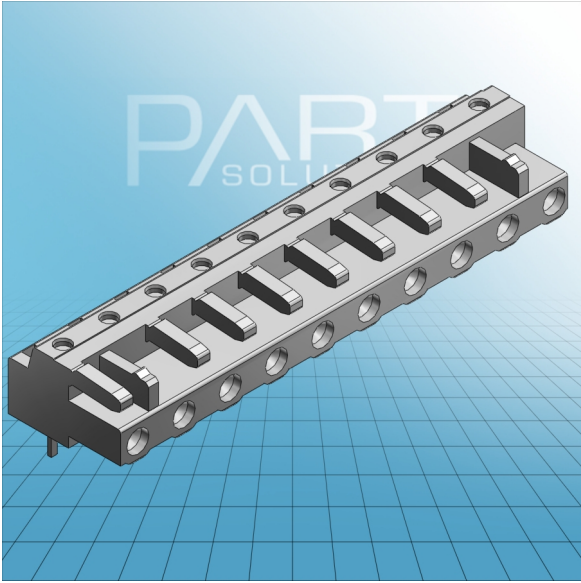


**FEMALE PLUG WITH RIGHT ANGLED  
SOLDER PIN PIN SPACING 7.5 MM / 0.  
295 IN 100% PROTECTED AGAINST  
MISMATING**



**FEMALE PLUG WITH RIGHT ANGLED  
SOLDER PIN PIN SPACING 7.5 MM / 0.  
295 IN 100% PROTECTED AGAINST  
MISMATING  
722-832 TO 722-842**

<b>ITEM-NO. (ITEM-NO.)</b>	722-840
<b>Measured voltage (Measured voltage / V)</b>	630
<b>Measured shock voltage (Measured shock voltage / kV)</b>	6
<b>Pollution degree (Pollution degree)</b>	2
<b>Current intensity (Current intensity / A)</b>	12
<b>RM (PIN SPACING / mm)</b>	7.5
<b>P (NO. OF POLES)</b>	10
<b>Height (Height / mm)</b>	11.6
<b>Width (Width / mm)</b>	74
<b>Depth (Depth / mm)</b>	18.25
<b>COLOR (COLOR)</b>	lichtgrau
<b>WEIGHT (WEIGHT / g)</b>	11.03
<b>Comment (Comment)</b>	L = (No. of poles - 1) x Pin Spacing + 5 mm + 1,5 mm
<b>Dimensions (Dimensions)</b>	1.3 +0.1 mm