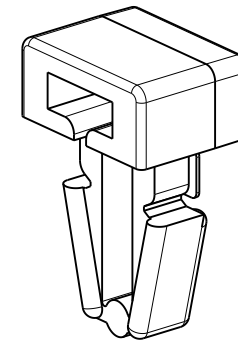
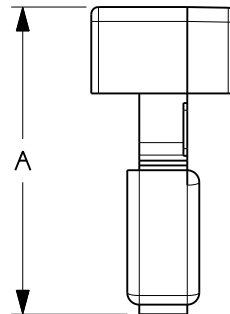
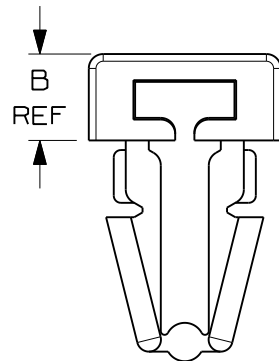
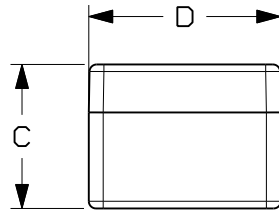


THIS COPY IS PROVIDED ON A RESTRICTED BASIS AND IS NOT TO BE USED IN ANY WAY DETRIMENTAL TO THE INTERESTS OF PANDUIT CORP.

PANDUIT PART NO.	USE WITH THESE CABLE TIE CROSS-SECTIONS	DIMENSIONS				WEIGHT g/100pcs
		A	B	C	D	
PM2H25	MINIATURE INTERMEDIATE STANDARD	.62 (15.8)	.18 (4.6) REF	.30 (7.6)	.38 (9.6)	.10 (.45)

NOTES:

- SEE CURRENT PRICE SHEET FOR PART NUMBER SUFFIX DESIGNATION FOR PACKAGE SIZE, AND COLOR.
- (\* ) DIMENSIONAL VARIANCE IS POSSIBLE DUE TO MOLDING PROCESS RELATED SINK MARKS.
- APPLICATION SPECIFICATION:  
HOLE DIAMETER: .245 (6.3) - .255 (6.5)  
PANEL THICKNESS: .125 (3.2) (MAX)



DIMENSIONS IN BRACKETS ARE METRIC [ mm ]	
CAD FILENAME/LAYERS G002391J_PB_PM2H25_03	
<b>PANDUIT</b> CORP. TINLEY PARK, ILLINOIS	
PUSH MOUNT PM2H25	
UNLESS OTHERWISE SPECIFIED, DIMENSIONAL TOLERANCES ARE: (.X) ±0.05 (1.3) (.XXX) ±0.010 (0.25) (.XX) ±0.02 (0.5) ANGLES ±5°	
UNLESS OTHERWISE SPECIFIED, ALL DIMENSIONS ARE GIVEN IN INCHES, THIRD ANGLE PROJECTION.	
DRAWN BY LGG	MAT'L: NYLON 6/6
DATE 01-20-02	SCALE 5:2
CHK'D	DRAWING NO. GB02391J DWG SIZE A

REV	DATE	BY	CHK	DESCRIPTION	ECN	R	CUST	SUP
3	5/27/08	DJSM		CORRECTED FILE NAME	GB02391J	3		
2	5/22/08	DJSM		TABULARIZED DIMENSIONS, REMOVED WINDOW DIMENSIONS	GB02391J	2		
1	02/05/03	MSAD		.070 +/- .015 WAS .070 +/- .010 (1.8 +/- 0.38) (1.8 +/- 0.25)	GB02391J	1		
R	01/10/02	LGG		INITIAL RELEASE	GB02391J	R		