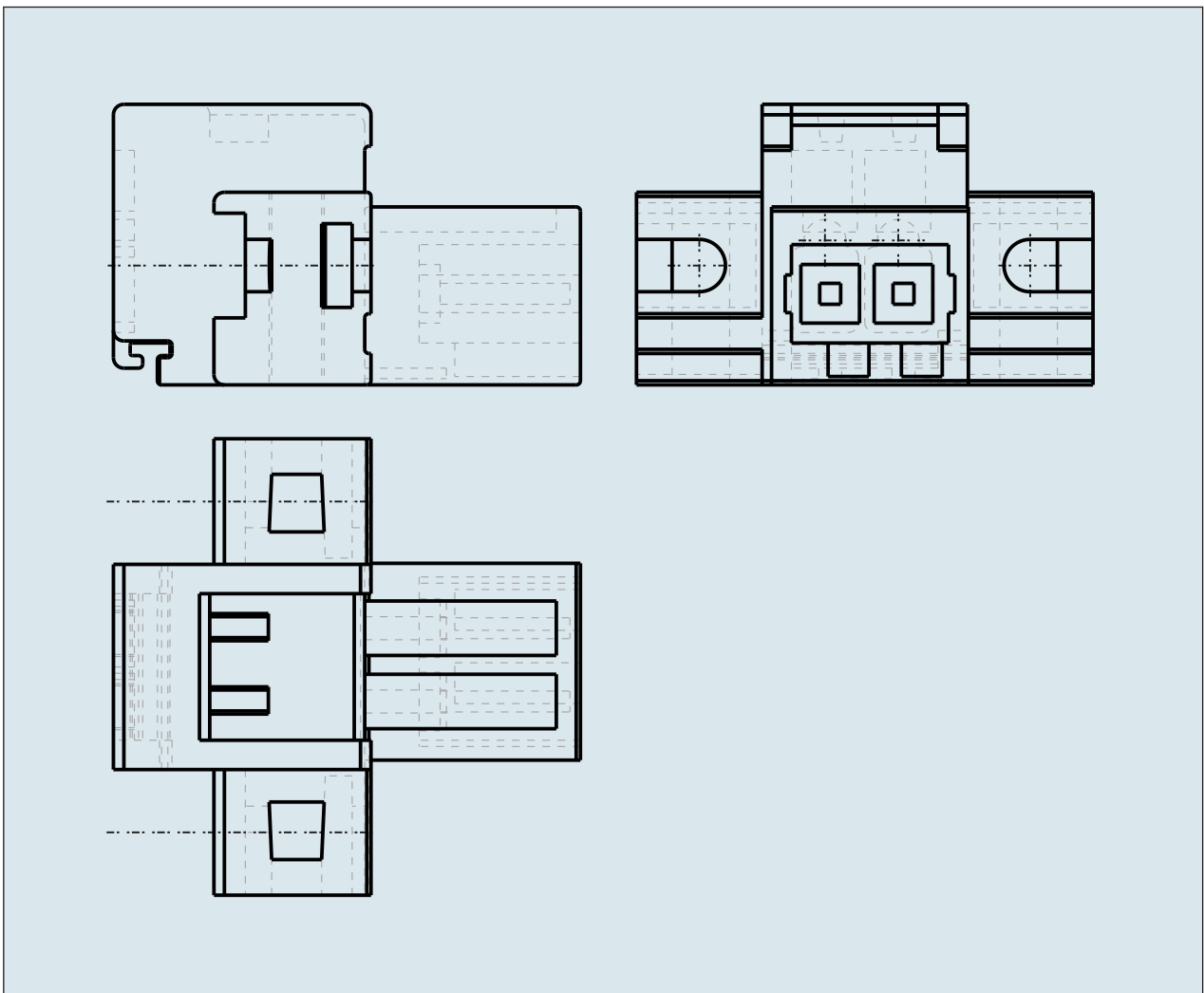
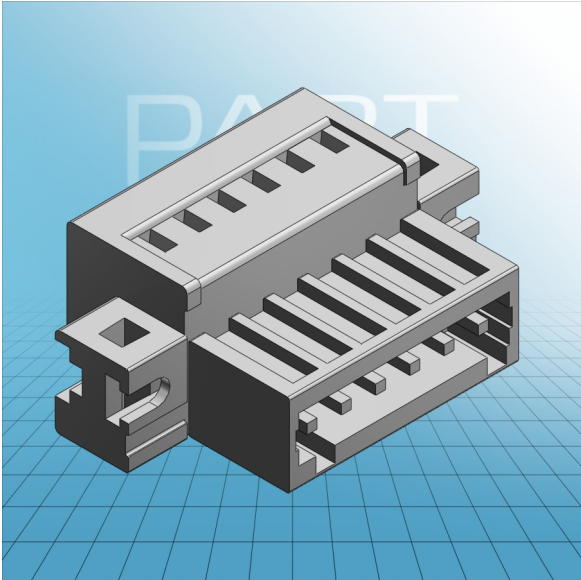


**MALE CONNECTOR WITH FIXING
FLANGE PIN SPACING 3.5 MM / 0.138
IN 100% PROTECTED AGAINST
MISMATING**



**MALE CONNECTOR WITH FIXING
FLANGE PIN SPACING 3.5 MM / 0.138
IN 100% PROTECTED AGAINST
MISMATING**

734-302/019-000 TO 734-324/019-000

ITEM-NO. (ITEM-NO.)	734-306/019-000
Cross section1 (Cross section / mm²)	0.08 - 1.5
Cross section2 (Cross section / AWG)	28 - 14
Strip length (Strip length / mm)	7
Measured voltage (Measured voltage / V)	160
Measured shock voltage (Measured shock voltage / kV)	2.5
Pollution degree (Pollution degree)	2
Current intensity (Current intensity / A)	10
RM (PIN SPACING / mm)	3.5
P (NO. OF POLES)	6
Height (Height / mm)	13.4
Width (Width / mm)	35.8
Depth (Depth / mm)	22.3
No. of connection Points (No. of connection Points)	6
No. of potentials (No. of potentials)	6
COLOR (COLOR)	lichtgrau
WEIGHT (WEIGHT / g)	6.016
Comment (Comment)	L1 = (No. of poles - x Pin Spacing) L2 = L1 + 8,8 mm L3 = L1 + 14,8 mm L4 = (No. of poles - 1) x Pin Spacing + 5,9 mm