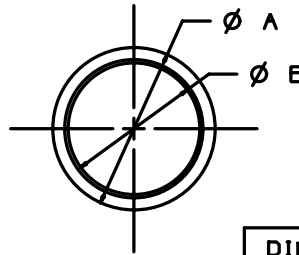
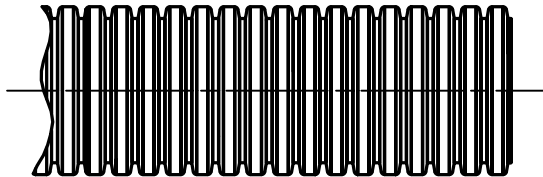


THIS COPY IS PROVIDED ON A RESTRICTED BASIS AND IS NOT TO BE USED IN ANY WAY DETRIMENTAL TO THE INTERESTS OF PANDUIT CORP.  
 MATERIAL: HEAT STABILIZED NYLON 6 MATERIAL: LOW DENSITY POLYETHYLENE

PART NO.	DIMENSIONS		WEIGHT lbs (g) / 100 ft
	A	B	
CLTS25N	0.397 (10.10)	0.277 (7.03)	0.81 (370.0)
CLTS35N	0.500 (12.7)	0.350 (8.89)	1.28 (580.0)
CLTS38N	0.556 (14.12)	0.415 (10.54)	1.47 (670.0)
CLTS50N	0.670 (17.02)	0.505 (12.83)	1.98 (900.0)
CLTS62N	0.816 (20.72)	0.650 (16.51)	2.39 (1085.0)
CLTS75N	0.935 (23.75)	0.760 (19.30)	2.75 (1250.0)
CLTS100N	1.090 (27.69)	0.915 (23.24)	3.70 (1680.0)
CLTS125N	1.500 (38.10)	1.290 (32.77)	5.77 (2620.0)
CLTS150N	1.728 (43.89)	1.480 (37.59)	6.16 (2800.0)

PART NO.	DIMENSIONS		WEIGHT lbs (g) / 100 ft
	A	B	
CLTS25F	0.397 (10.10)	0.277 (7.03)	0.75 (340.0)
CLTS35F	0.500 (12.7)	0.350 (8.89)	1.12 (510.0)
CLTS38F	0.556 (14.12)	0.415 (10.54)	1.38 (625.0)
CLTS50F	0.670 (17.02)	0.505 (12.83)	1.85 (840.0)
CLTS62F	0.816 (20.72)	0.650 (16.51)	2.29 (1040.0)
CLTS75F	0.935 (23.75)	0.760 (19.30)	2.64 (1200.0)
CLTS100F	1.090 (27.69)	0.915 (23.24)	3.52 (1600.0)
CLTS125F	1.500 (38.10)	1.290 (32.77)	6.03 (2740.0)
CLTS150F	1.728 (43.89)	1.480 (37.59)	7.39 (3360.0)



NOTES:

- SEE PART NUMBER SUFFIX DESIGNATION ON CURRENT PRICE SHEET FOR PACKAGE SIZE AND PART COLOR.

DIMENSIONS IN PARENTHESES ARE IN METRIC UNITS

OLD FILENAME/LAYERS GB0222BD\_PB\_NSNLCTCLT\_06

**PANDUIT**

CORP. TINLEY PARK, ILLINOIS

CLTS( )N, CLTS( )F  
(NON-SLIT)  
CORRUGATED TUBING

UNLESS OTHERWISE SPECIFIED,  
DIMENSIONAL TOLERANCES ARE:  
(.X) ± (.XXX) ± 0.050  
(.XX) ± ANGLES ±

UNLESS OTHERWISE SPECIFIED,  
ALL DIMENSIONS ARE GIVEN  
IN INCHES, THIRD ANGLE PROJECTION.

REV	DATE	BY	CHK	DESCRIPTION	ECN	R	CUST	SUP
6	10/7/04	JAD		ADD HEAT STABILIZED TO MATERIAL	GB0222BD	6		
5	9/25/02	LGG		CHG MATERIAL TO: LOW DENSITY POLYETHYLENE	GB0222BD	5		

DRAWN BY CMR

MAT'L:

SCALE NONE

DATE 7-5-95

SEE ABOVE

DRAWING NO.

GB0222BD

DWG

A  
SIZE