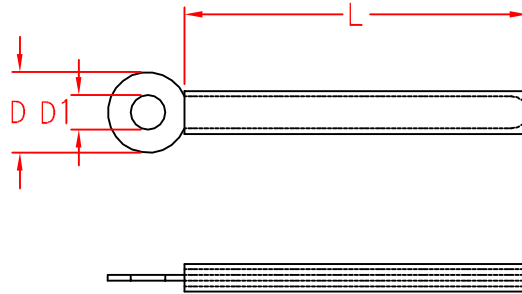


CW TYPE



ITEM NO.	D	D1	L
CW3-32	7.5	3.3	32.1
CW3-52	7.5	3.3	52.1
CW3-60	8.0	3.6	62.1
CW4-35	8.5	4.2	35.2
CW4-50	8.0	4.2	52.2
CW4-75	7.5	4.2	74.5
CW4-78	8.0	4.2	78.5
CW5-70	8.5	5.1	69.3
CW6-78	10.0	6.0	78.0

		MATERIAL	METAL	ITEM NO.	CW TYPE
			P.V.C.		
SCALE		FINISH	CABLE CLAMP		
△	(. .)	TOLERANCE ±0.5mm	△	04-30-2003 DATE	REVISIONS K001
					R.NO.

