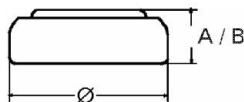


**Type Number**..... 339  
**Designation IEC**..... ---  
**System**..... Silver oxide/ Zinc /  
 NaOH - Electrolyte



**Nominal Voltage**..... 1,55 V  
**Typical Capacity C**..... 12 mAh  
 Load 68,1 k  $\Omega$ , at 20°C down to 1.2 V

**Weight (approx.)**..... 0,21 g  
**Volume**..... 0,04 ccm  
**Coding**..... Date of Manufacturing  
 Month/Year

**Temperature Ranges** min max.  
 Storage..... 0°C 55°C  
 Discharge..... 0°C 55°C

**Dimensions** min max.  
 Diameter ( $\varnothing$ )..... 6,65 6,80  
 Height (A/B)..... 1,30 1,45

### Typical Capacities (at 20°C)

Discharge Type	Load	End Voltage: 1.2V	
Continuous 24h/d, 7d/w	68100 $\Omega$	Time:	480 h
		Capacity:	11 mAh
		Energy:	17 mWh

**No publication or circulation of data to third parties without consent of VARTA Consumer Batteries**

All Data contained herein is for single cells For battery applications, performance data may vary from single cell data, depending on specific battery configuration