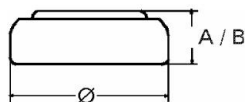


Type Number..... 386
Designation IEC..... SR43
System..... Silver oxide/ Zinc /
 KOH - Electrolyte



Nominal Voltage..... 1,55 V
Typical Capacity C..... 115 mAh
 Load 5.6 k Ω , at 20°C down to 1.2 V

Weight (approx.)..... 1,56 g
Volume..... 0,39 ccm
Coding..... Date of Manufacturing
 Month/Year

Temperature Ranges min max.
 Storage..... 0°C 60°C
 Discharge..... 0°C 60°C

Dimensions min max.
 Diameter (A)..... 11,25 11,60
 Height (B)..... 3,80 4,20

Typical Capacities (at 20°C)

Discharge Type	Load	End Voltage: 1.2V	
Continuous 24h/d, 7d/w	5600 Ω	Time:	430 h
		Capacity:	115 mAh
		Energy:	170 mWh

No publication or circulation of data to third parties without consent of VARTA Consumer Batteries

All Data contained herein is for single cells For battery applications, performance data may vary from single cell data, depending on specific battery configuration