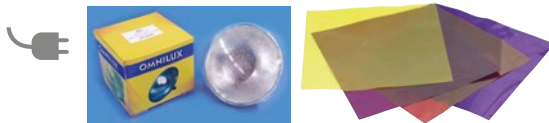




**EUROLITE PAR-56 Lite Spot**

PAR-56 Spot in steel sheet housing

- Fourth snap clamp for the color filter frame
- For permanent installations or road use
- For PAR 56 lamps



**Technical specifications:**

Power supply:	230 V AC, 50-60 Hz ~
Power consumption:	310 W
Dimensions (LxWxH):	240 x 215 x 235 mm
Weight:	1.3 kg

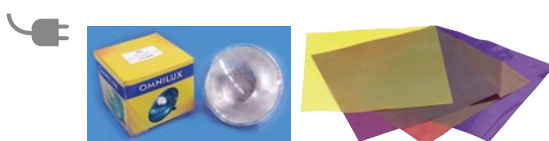
No. 42000410  
 No. 42000420..... Set: lamp, color-foils and color filter frame



**EUROLITE PAR-56 Spot Long Set**

Complete set with lamp and power-plug

- Rugged aluminum housing
- Delivered with color filter frame
- Delivered with 4 color foils



**Technical specifications:**

Power supply:	230 V AC, 50-60 Hz ~
Power consumption:	max. 500 W
Dimensions (LxWxH):	360 x 230 x 235 mm
Weight:	1.4 kg

No. 42000760..... silver  
 No. 42000761..... black



**EUROLITE PAR-56 Spot Short With Cable**

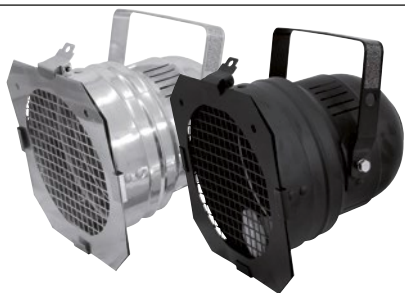
Compact and powerful

- Made of aluminum for especially low weight
- Strong aluminum mounting bracket

**Technical specifications:**

Power supply:	230 V AC, 50-60 Hz ~
Power consumption:	max. 500 W
Fitting lamp:	max. 230 V/500 W PAR-56
Dimensions (LxWxH):	260 x 235 x 220 mm
Weight:	1 kg

No. 42000800..... black  
 No. 42000810..... silver



**EUROLITE PAR-56 Spot Short With Plug**

Compact and powerful

- Made of aluminum for especially low weight
- Strong aluminum mounting bracket



**Technical specifications:**

Power supply:	230 V AC, 50-60 Hz ~
Power consumption:	max. 500 W
Fitting lamp:	max. 230 V/500 W PAR-56
Dimensions (LxWxH):	260 x 235 x 220 mm
Weight:	1 kg

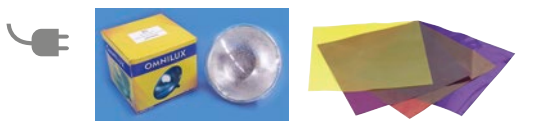
No. 42000802..... black  
 No. 42000812..... silver



**EUROLITE PAR-56 Spot Short Set**

Complete set with lamp and power plug

- Rugged aluminum housing
- Delivered with filter frame with grille as splinter protection
- Delivered with 4 color foils



**Technical specifications:**

Power supply:	230 V AC, 50-60 Hz ~
Power consumption:	max. 500 W
Dimensions (LxWxH):	220 x 210 x 220 mm
Weight:	0.8 kg

No. 42000825..... black  
 No. 42000826..... silver



**EUROLITE PAR-56 Spot CDM150**

Perfect for trade show and shop lighting

- Rugged aluminum housing
- For extremely powerful CDM-T lamp
- Ideal for theatres, exhibitions and mobil use



**Technical specifications:**

Power supply:	230 V AC, 50-60 Hz ~
Power consumption:	210 W
Dimensions:	360 x 240 x 320 mm
Weight:	4.6 kg

No. 42000910..... silver  
 No. 42000920..... black