



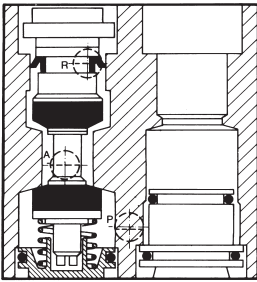
Mechanical characteristics

Foot valve body and protection in nylon with steel reinforcing plate.
 Valve body in die-cast zinc alloy (zamak).
 Seals in oil/wear-resistance compound.

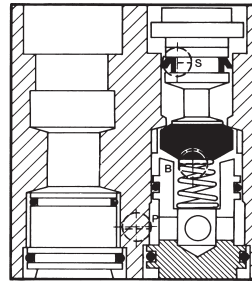
Pneumatic characteristics

Max working pressure: 10 bar
 Ambient temperature: -10 ÷ 70°C
 Fluid temperature: -10 ÷ 50°C
 Operation with or without lubrication.
 Capacity: 800 NI/min

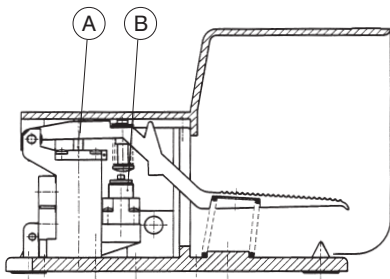
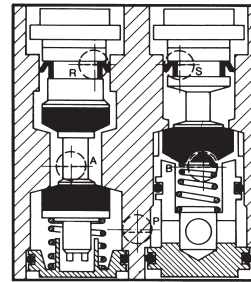
3/2 NC valve body



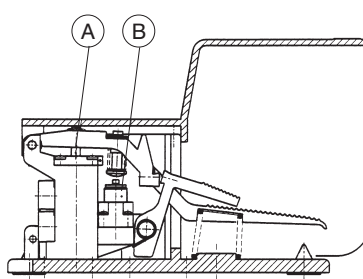
3/2 NO valve body



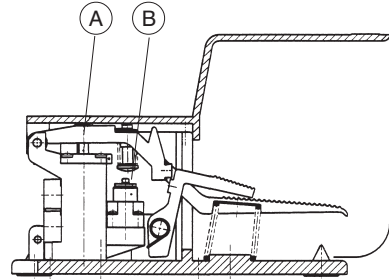
5/2 valve body



Servoassisted pedal with spring return. Direct operation (A) or pneumatically assisted (B).



Servoassisted pedal with two positions (bistable). The pedal must be deeply pressed. The unlocking pedal brings the pedal back to the starting position.



Servoassisted pedal with safety device. Operation is possible only by pushing both pedals at the same time. Pedals return to the starting position simply by releasing them. In this case unintentional operation is avoided.

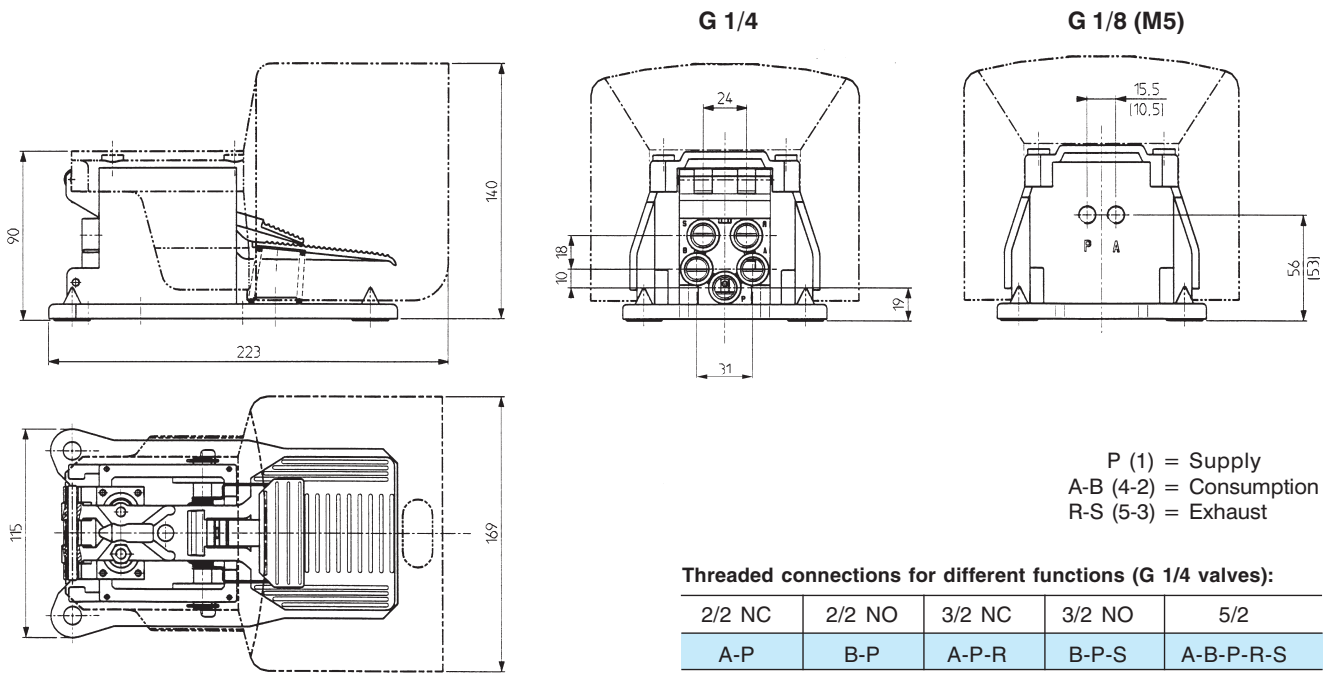
Pneumatic pedal	Symbol	Control	Return	Ways	Connections	Ø mm	Capacity NI/min	Force (N)	Mass kg	Part number
		Pedal	Spring	3/2 NC	M 5	2,3	98	20	0,92	AM-5053
					G 1/8	2,3	98	20	0,96	AM-5043
					G 1/4	6	800	20	1,25	AM-5000
		Pedal	Spring	5/2	G 1/4	6	800	20	1,45	AM-5001
					G 1/4	6	800	20	1,52	AM-5004
		Pedal	Spring	2/2 NC	M5	2,3	98	20	0,92	AM-5053B
					G 1/8				0,96	AM-5043B
		Pedal	Spring	2/2 NO	M5	2,3	98	20	0,92	AM-5053D
G 1/8					0,96				AM-5043D	

Upon request: operation with pedal provided with safety stop - servoassisted pedal - servoassisted pedal with safety control - NO valves 3/2

Electric pedal	Symbol	Description	Force N	Mass Kg	Part number
		pedal without electric microswitch	20	0,86	AM-5050
		pedal with electric microswitch	20	0,92	AM-5051
		pedal with double electric microswitch	20	0,95	AM-5052
Body, protection and pedal in dielectric plastic material					



**2/2 - 3/2 NC, NO 5/2 - M5 - G 1/8 - G 1/4 pneumatic pedals
Poppet system**



Electric pedal

