



TWO-HAND SAFETY VALVE

code 08.156.4

operating instructions

This valve is used to pilot high-flow directional control valves connected to machines which have a high risk of injuries to the hands. The machine operator must simultaneously operate, in a safe area, two three-way manual valves for correct operation. The safety valve will ignore a single depression of one of the manual valves. To repeat the cycle both pilot signals must be exhausted and the manual valves simultaneously actuated again.

VALVE INSTALLATION AND CONNECTION

- Connect a 3/2 NC valve to the Two-hand safety valve at the ports numbered with "1". The port numbers are marked on the bottom of the Two-hand safety valve near the corresponding threaded ports. With these 3/2 valves the operator gives to the Two-hand safety valve two simultaneous signals.
- Connect to the port numbered with "2" the high-flow device which should be operated by the Two-hand safety valve.
- A silencer or an exhaust collecting device can be connected to port "3".
- Mount the Two-hand safety valve using the two fixing holes. The air hoses must not be bent or constricted, and the normal air flow must not be obstructed.

VALVE OPERATION

- Respect the minimum operating pressure (2 bar). The Two-hand safety valve will not operate at lower pressures.
- Find, with reference to the graphic "reaction time related to pressure", printed on the back of this page, the Δt (delay between the two pilot signals) within which the Two-hand safety valve will operate. If the supply pressure increases the Δt decreases.
- Manually and simultaneously operate both 3/2 NC valves. The Two-hand safety valve receives both pilot signals and, if the delay Δt is respected, operates the high-flow device to which it is connected.

WARNING

- In case of anomalous operation please refer to the manufacturer. Do not try to repair the Two-hand safety valve by yourself. The label will break if the valve is disassembled. In case of broken label the guarantee immediately expires.
- The Two-hand safety valve does not allow to repeat the operation without exhausting both 3/2 NC valves connected to it. It is impossible to block one of them in the actuated position to operate only the other one. To repeat the operation, both pilot signals must be exhausted and the manual valves simultaneously actuated again.
- Fluids carrying particles of solvent or fluids not compatible with NBR are not allowed to operate with the Two-hand safety valve.

TECHNICAL DATA

Delay between two actuating signals: $\Delta t < 0.5$ s
Working pressure range: 2 bar ... 8 bar

Temperature range: max +60°C
Maximum flow rate: 100 NI/min
Fluid: 50 μ filtered, lubricated or non lubricated air

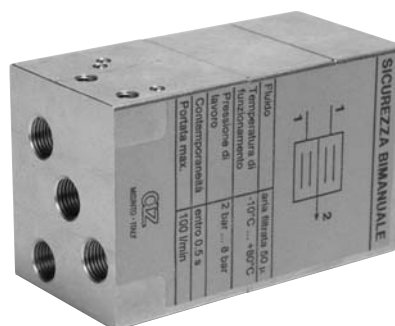
Materials

Body: aluminium 11S

Springs: stainless steel

Seals: NBR

Internal parts: brass OT58



CE APPROVAL DECLARATION

The manufacturer

AZ PNEUMATICA s.r.l.
Via Kennedy, 26
I-20020 MISINTO
ITALY

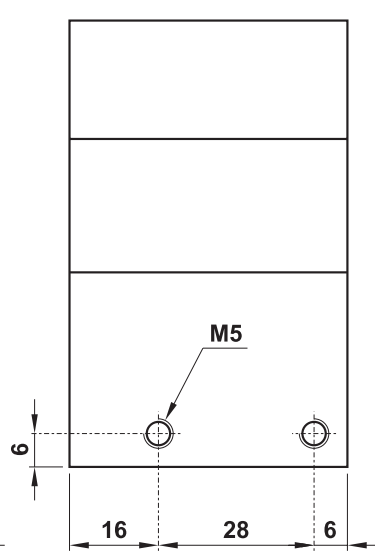
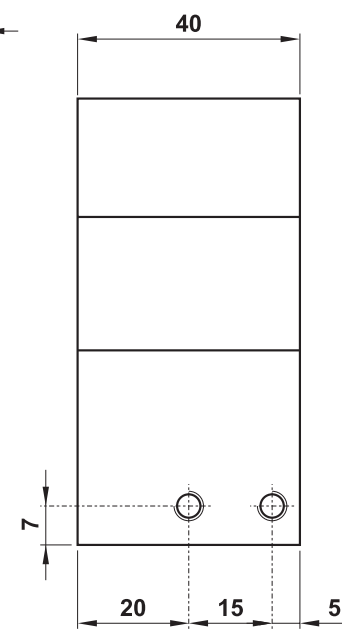
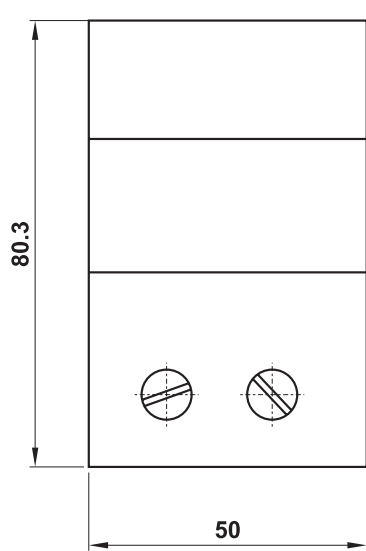
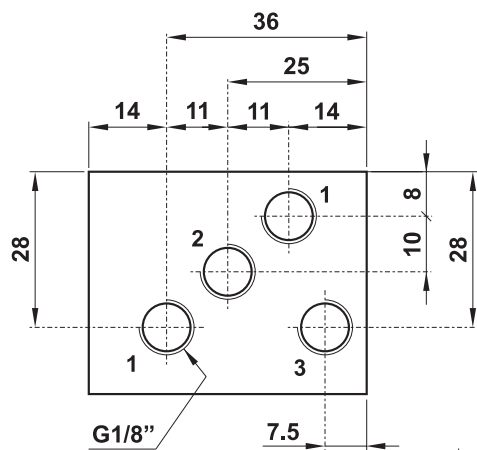
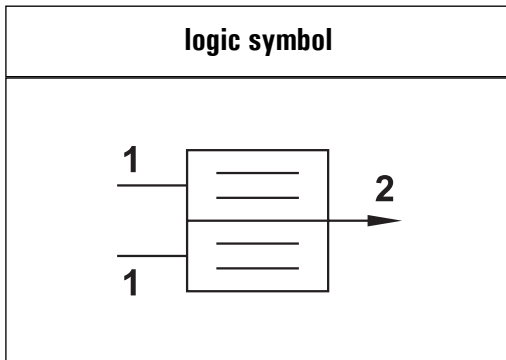
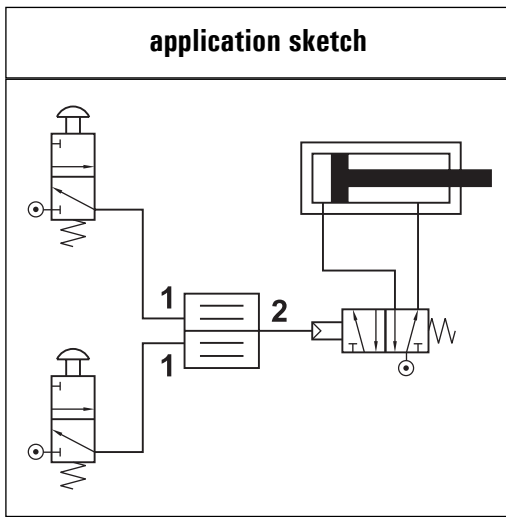
Tel. +39-02-96328519
Fax +39-02-96720095

<http://www.azpneumatica.com>
e-mail: azpneu@tin.it

declares, under his own responsibility, that the device TWO-HAND SAFETY VALVE, code 08.156.4, complies to the Machinery Directives EEC 89/392, 91/368, 93/44, 96/68 and to Norm EN 574, level 1. For this device we have got the CE-certification

nr. MAC 249 AT 312

on 06.04.98 from ANCCP s.r.l., company entitled by the Italian Industry Ministry and the EEC with number 0302.



RISPOSTA TEMPO-PRESSIONE
reaction time related to pressure

