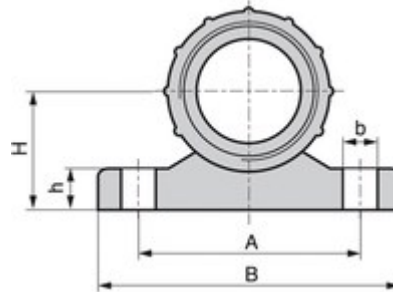


## Product Description

Space-saving



## Application range

- Mechanical engineering
- Plant engineering
- Control cabinet manufacturing
- Used in areas where SILVYN® protective conduits cannot be inserted into a machine or an appliance

## Benefits

- Space-saving

## Design

- Plastic fixing bracket
- 2 x bore hole for fixation



Technical Data

Colour delivered

Grey, RAL 7001

Temperature range

-40°C to +100°C

Material

PP

Article List

| Part number    | Connection thread M | A mm | B in mm | h mm | H    | Hole Ø (mm) | Pieces / PU |
|----------------|---------------------|------|---------|------|------|-------------|-------------|
| SILVYN® BW-K-M |                     |      |         |      |      |             |             |
| 55000911       | 20 x 1.5            | 37.5 | 50.0    | 7.5  | 20.0 | 5.7         | 50          |
| 55000921       | 25 x 1.5            | 43.0 | 57.0    | 8    | 25.0 | 5.7         | 50          |
| 55000931       | 32 x 1.5            | 53.5 | 67.0    | 8    | 27.0 | 6.7         | 50          |
| 55000941       | 40 x 1.5            | 65.5 | 79.5    | 9    | 33.0 | 6.7         | 50          |
| 55000951       | 50 x 1.5            | 69.5 | 86.0    | 9.5  | 36.5 | 6.7         | 50          |

Footnote:

Photographs are not to scale and do not represent detailed images of the respective products.