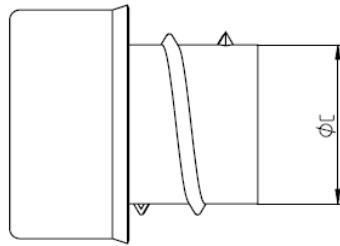


<b>DATA SHEET</b>	6180 2180
<b>SILVYN® US-AS</b>	valid from : 28.03.2007

SILVYN® US-AS Inner- / End sleeve for mounting connector SILVYN® US on conduit SILVYN® AS or end sleeve to prevent cable damage without using a connector,



ART. Nr.	PG size for SILVYN® AS	conduit Ø		smallest inner sleeve Ø C
		inner	outer	
6180 2180	7	8	10	6,5
6180 2190	9	11	14	10,0
6180 2200	11	14	17	12,5
6180 2210	13,5	16	19	14,5
6180 2220	16	18	21	16,5
6180 2230	21	23	27	21,5
6180 2240	29	31	36	29,5
6180 2250	36	40	45	38
6180 2270	48	51	56	49,0

**Material:** brass nickel-plated

For more information please see our current catalogue.  
Please do not hesitate to contact our laboratory if there any questions regarding resistance against aggressive agents and special oil.