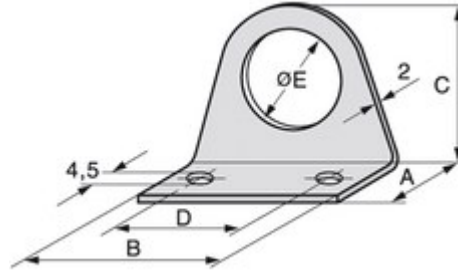


## Product Description

Space-saving



## Application range

- Mechanical engineering
- Plant engineering
- Control cabinet manufacturing
- Used in areas where SILVYN® protective conduits cannot be inserted into a machine or an appliance

## Benefits

- Space-saving

## Design

- Steel fixing bracket
- 2 x bore hole for fixation



**Technical Data**

**Material**

Steel, passivated

**Article List**

Part number	Article designation	A mm	B in mm	Overall length/ C (mm)	D (mm)	E mm	Pieces / PU
SILVYN® BW-M							
55000531	16	20.0	50.0	33.2	40.0	17.0	25
55000541	20	20.0	50.0	38.0	40.0	21.0	25
55000551	25	20.0	60.0	46.9	50.0	26.0	25
55000561	32	20.0	70.0	56.9	60.0	33.0	25
55000571	40	20.0	80.0	67.0	70.0	41.0	25
55000572	50	20.0	90.0	78.4	80.0	51.0	25

**Footnote:**

Photographs are not to scale and do not represent detailed images of the respective products.