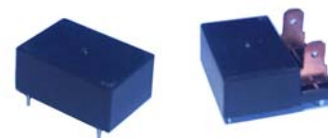


PCB Relay

TRCD/TRCDF

- Sub-miniature dimensions: 23×16.1×10.2 (L×W×H)
- High-sensitivity models available with low power consumption (200 mW)
- Conform to ROHS,ELV directive



23×16.1×10.2
25×23×10.2



06001015775



E173485

R50066938

ORDERING CODE

<u>TRCD</u>	<u>L</u>	—	<u>12VDC</u>	—	<u>S</u>	—	<u>H</u>
1	2		3		4		5
1. Relay Model					4. Sealed		
2. Coil Power					5. Contact Form		
			L=0.2W, D=0.36W, N=0.45W		H: Form A		
3. Coil Nominal Voltage							
			3,5,6,9,12,24,48VDC				

COIL DATA

Nominal Voltage(VDC)	3	5	6	9	12	24	48		
Coil Resistance(Ω ±10%) at 20°C	20	56	80	180	320	1280	5120	0.45W	
Rated Current(mA)	150	90	75	50	37.5	18.7	9.4		
Max Operate Voltage(VDC)	2.25	3.75	4.5	6.75	9	18	36		
Min Release Voltage(VDC)	0.15	0.25	0.3	0.45	0.6	1.2	2.4		
Coil Resistance(Ω ±10%) at 20°C	45	125	180	405	720	2880		0.2W	
Rated Current(mA)	66.7	40	33.3	22.2	16.7	8.3			
Max Operate Voltage(VDC)	2.25	3.75	4.5	6.75	9	18			
Min Release Voltage(VDC)	0.15	0.25	0.3	0.45	0.6	1.2			
Coil Resistance(Ω ±10%) at 20°C	25	69	100	225	400	1600	6400	0.36W	
Rated Current(mA)	120	72	60	40	30	15	7.5		
Max Operate Voltage(VDC)	2.25	3.75	4.5	6.75	9	18	36		
Min Release Voltage(VDC)	0.15	0.25	0.3	0.45	0.6	1.2	2.4		
Max Applicable Voltage	130% at 70°C, 170% at 23°C								

CONTACT DATA

Contact Form	1H
Contact Material	Silver Alloy
Load	Resistive load(COS Φ=1)
Contact Ratings	16A 250VAC 10A 250VAC/24VDC 15A 125VAC 1/2HP 125VAC TV-5A @125VAC(LAMP)
Minimum load	100mA 5VDC
Max Switching Voltage	250VAC/125VDC
Max Switching Current	16A

Max Switching Power	4000VA/480W
Contact Resistance	100m Ω Max at 6VDC 1A
Life Expectancy	Electrical: 100,000 Operations(at30Operations/minute)
	Mechanical: 10,000,000 Operations

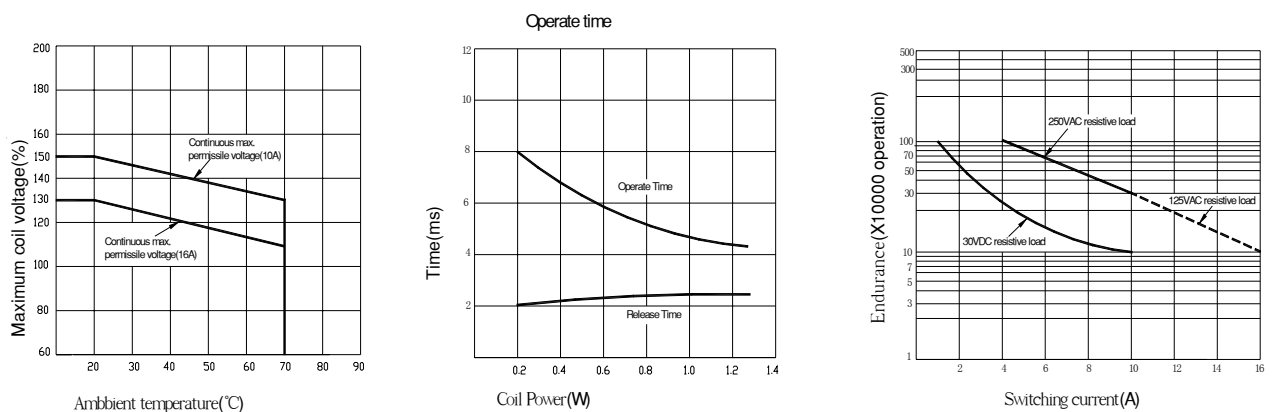
■ GENERAL DATA

Insulation Resistance	100M Ω Min at 500VDC
Dielectric Strength Between Open Contacts	750VAC(for one minute)
Between Contacts and coil	2500VAC(for one minute)
Operate Time	15ms
Release Time	8ms
Temperature Range	-40°C to +85°C
Shock Resistance	Operating Extremes: 10G
	Damage Limits: 100G
Vibration Resistance	10-55Hz, 1.5mm
Max. switching frequency	Mechanical: 18,000operations/hr
	Electrical: 1,800operations/hr
Humidity	20-85%
Weight	Approx 10g
Safety Standard	UL、TÜV、CQC

■ APPROVED STANDARDS

Model	Coiling rating	Safety Standard	Contact rating
TRCD(TRCDF)	3 to 48VDC	TÜV	16A 250VAC 10A 250VAC 10A 24VDC
		UL/cUL	10A 250VAC 15A 125VAC 1/2HP 125VAC TV-5A @125VAC (LAMP)
		CQC	16A 250VAC

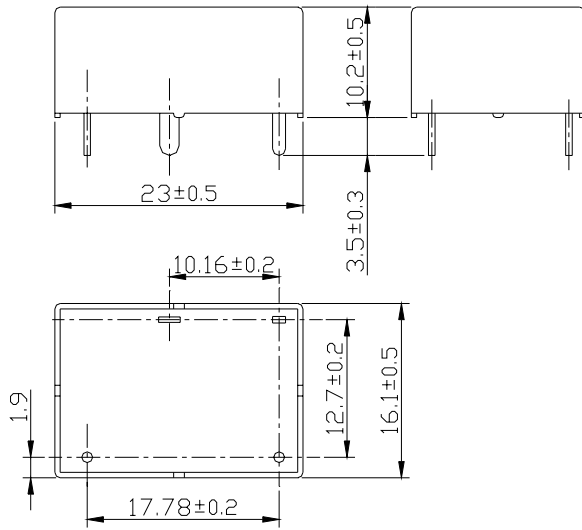
■ ENGINEERING DATA



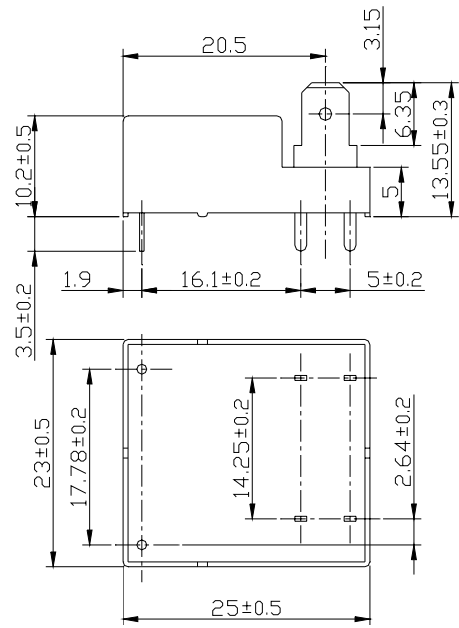
OVERALL AND MOUNTING DIMENSIONS

Outline dimensions

TRCD

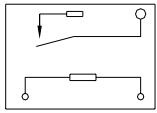


TRCDF



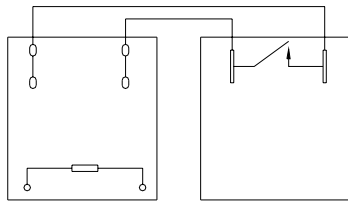
Wiring Diagrams

TRCD



(Bottom View)

TRCDF

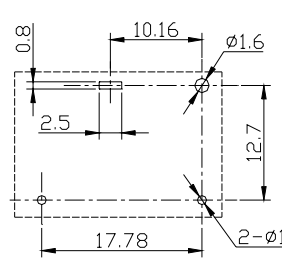


(Top View)

(Bottom View)

PC Board Layouts (Bottom View)

TRCD



TRCDF

