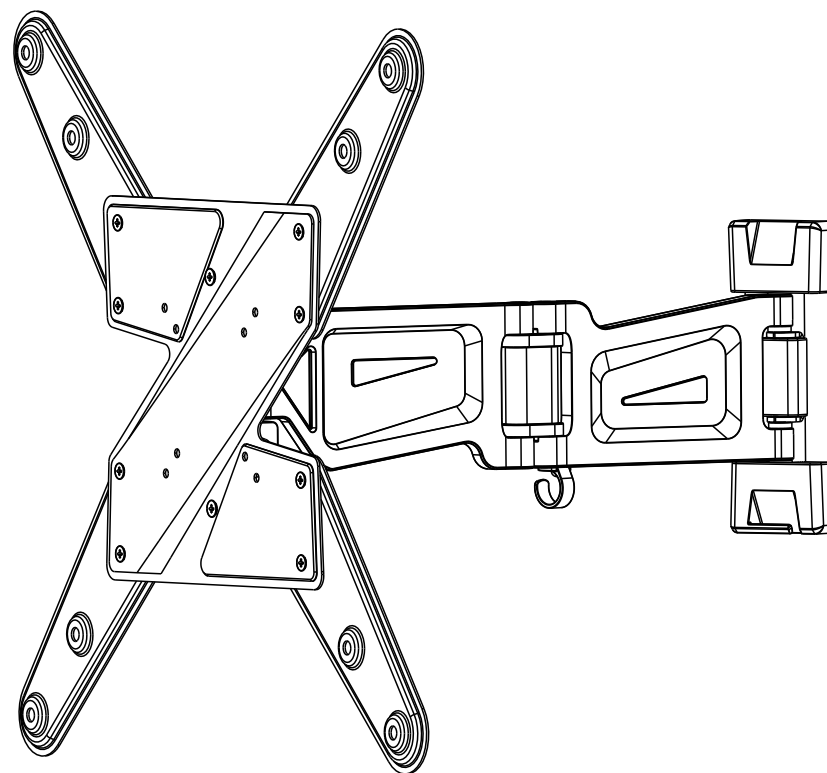


Full Motion LED, LCD TV Wall Mount



CAUTION: DO NOT EXCEED
RATED LISTED WEIGHT. SERIOUS
INJURY OR PROPERTY DAMAGE
MAY OCCUR!

LDA10-442



75x75/100x100
200x100/200x200
300x300/400x200
400x400



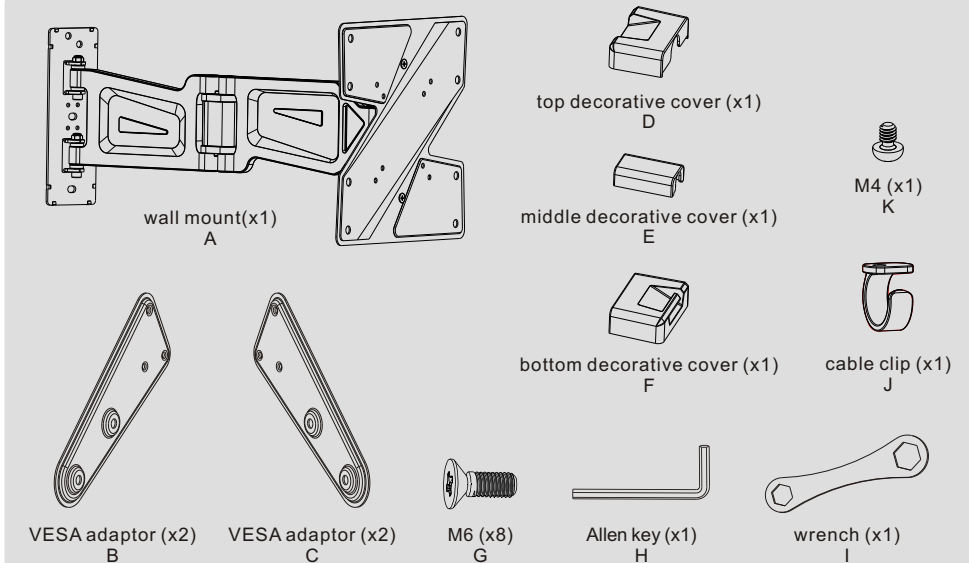
NOTE: Read the entire instruction manual before you start installation and assembly.

WARNING

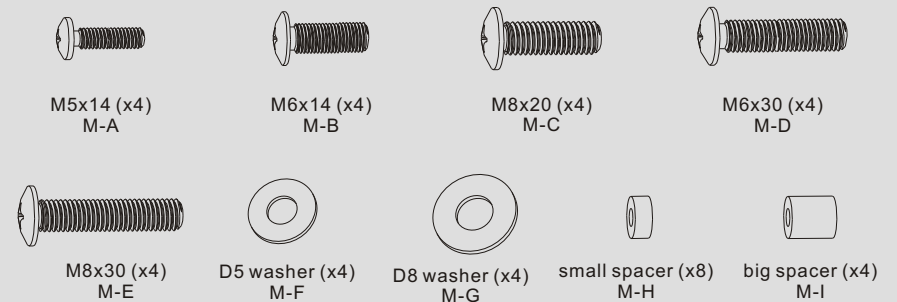
- Do not begin the installation until you have read and understood all the instructions and warnings contained in this installation sheet. If you have any questions regarding any of the instructions or warnings, please contact your local distributor.
- This mounting bracket was designed to be installed and utilised **ONLY** as specified in this manual. Improper installation of this product may cause damage or serious injury.
- This product should only be installed by someone with good mechanical ability who has basic building experience and fully understands this manual.
- Make sure that the supporting surface will safely support the combined weight of the equipment and all attached hardware and components.
- If mounting to wood wall studs, make sure that mounting screws are anchored into the center of the studs. The use of a stud finder is highly recommended.
- Always use an assistant or mechanical lifting equipment to safely lift and position the equipment.
- Tighten screws firmly, but do not over tighten. Over tightening can cause damage to the items, This greatly reduces their holding power.
- This product is intended for indoor use only. Using this product outdoors could lead to product failure and personal injury.

Component Checklist

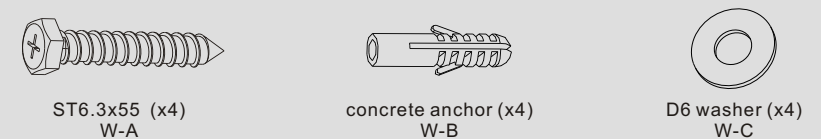
IMPORTANT: Ensure that you have received all parts according to the component checklist prior to installation. If any parts are missing or faulty, telephone your local distributor for a replacement.



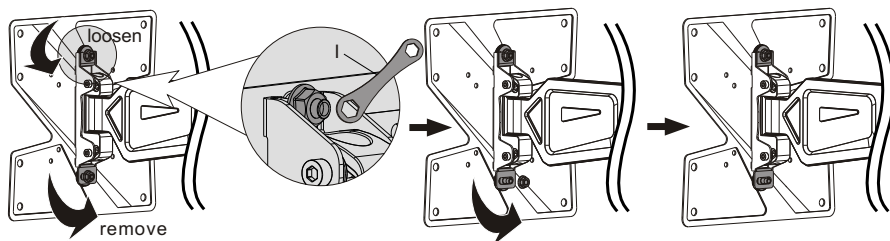
Package M



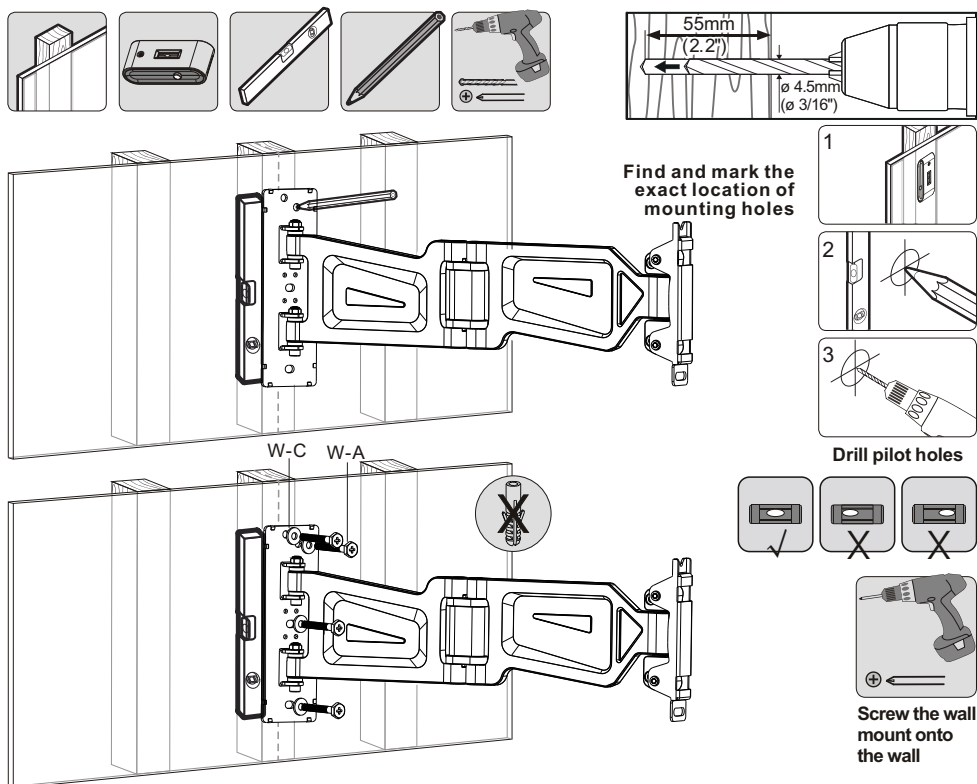
Package W



1. Separating the VESA Plate from the Wall Mount



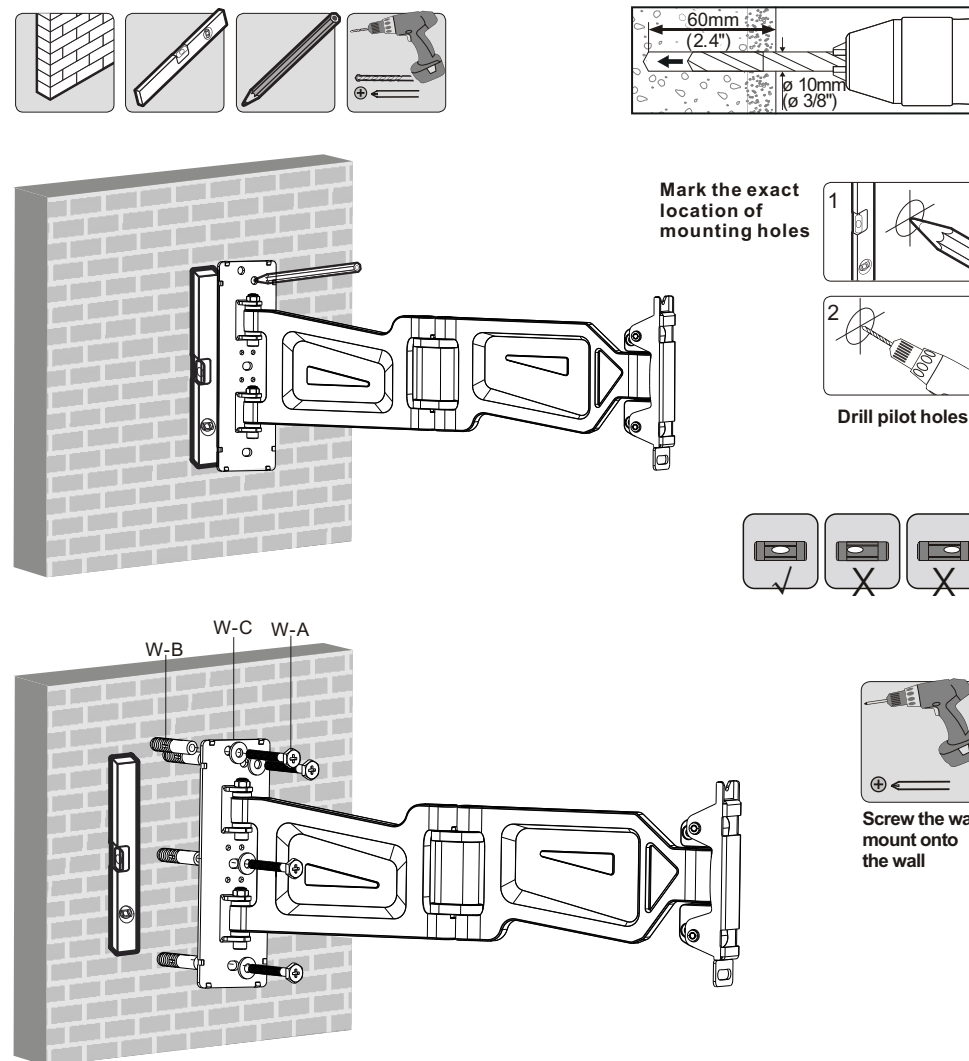
2a. For Wood Stud Wall Mounting



⚠ WARNING

- Make sure that mounting screws are anchored into the center of the studs. The use of a stud finder is highly recommended.
- Installers are responsible to provide hardware for other types of mounting situations.
- Installers must verify that the supporting surface will safely support the combined weight of the equipment and all attached hardware and components.

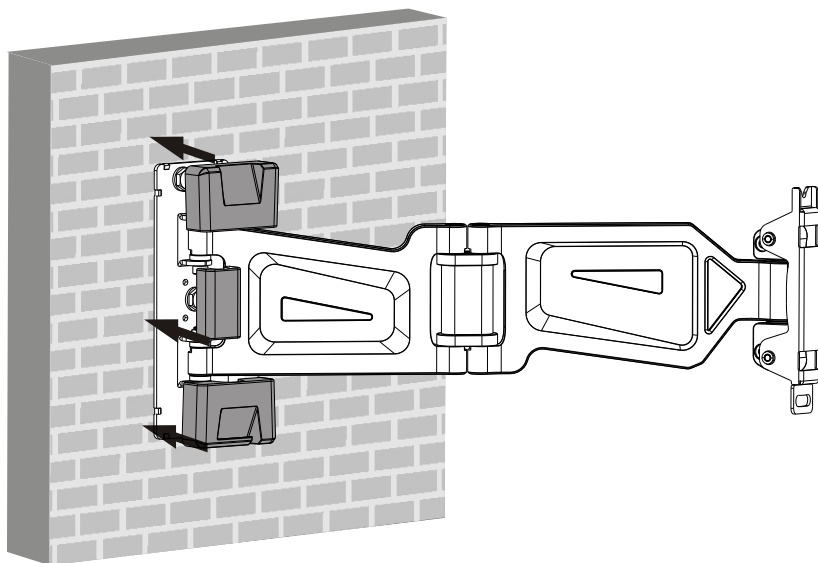
2b. For Solid Brick and Concrete Mounting



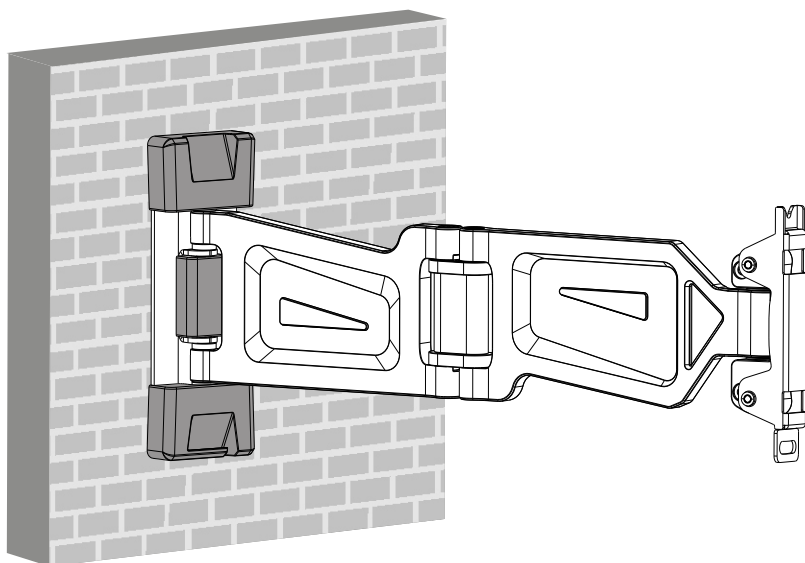
⚠ WARNING

Installers must verify that the supporting surface will safely support the combined weight of the equipment and all attached hardware and components.

3. Installing the Decorative Covers

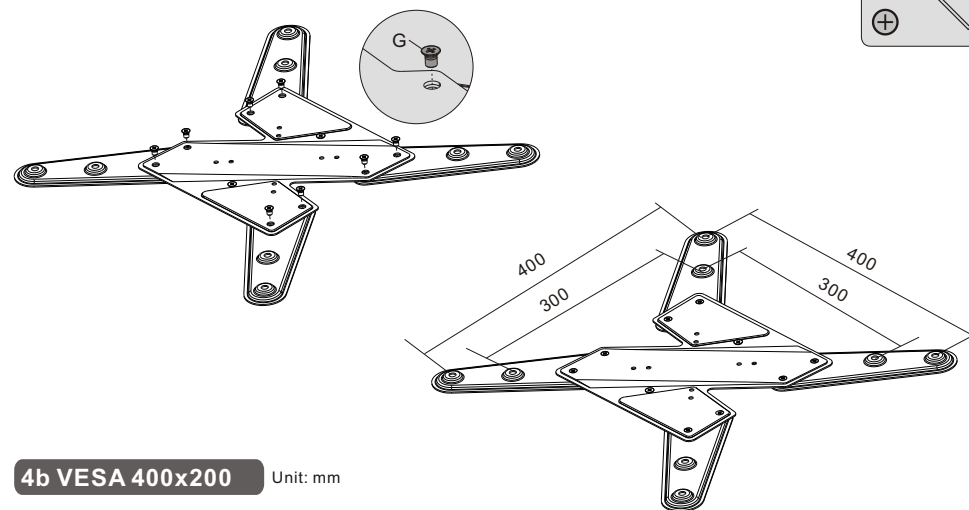
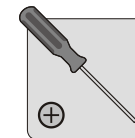


Install the decorative covers along the wall plate rail until they fit snugly onto the wall plate.

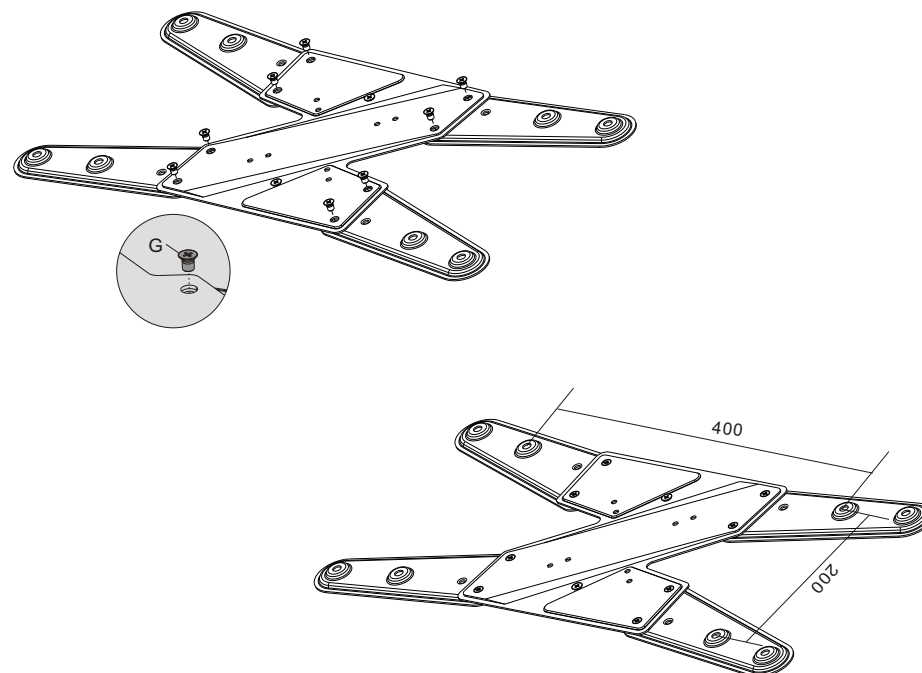


4. Assembling the VESA Adaptors

4a VESA 300x300, 400x400 Unit: mm

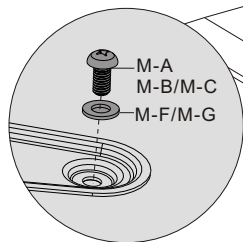
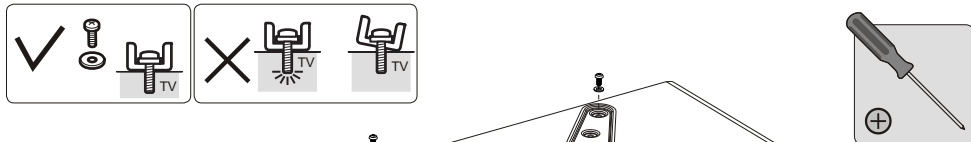


4b VESA 400x200 Unit: mm



5. Installing the VESA Plate

5-1 For Flat Back Screens

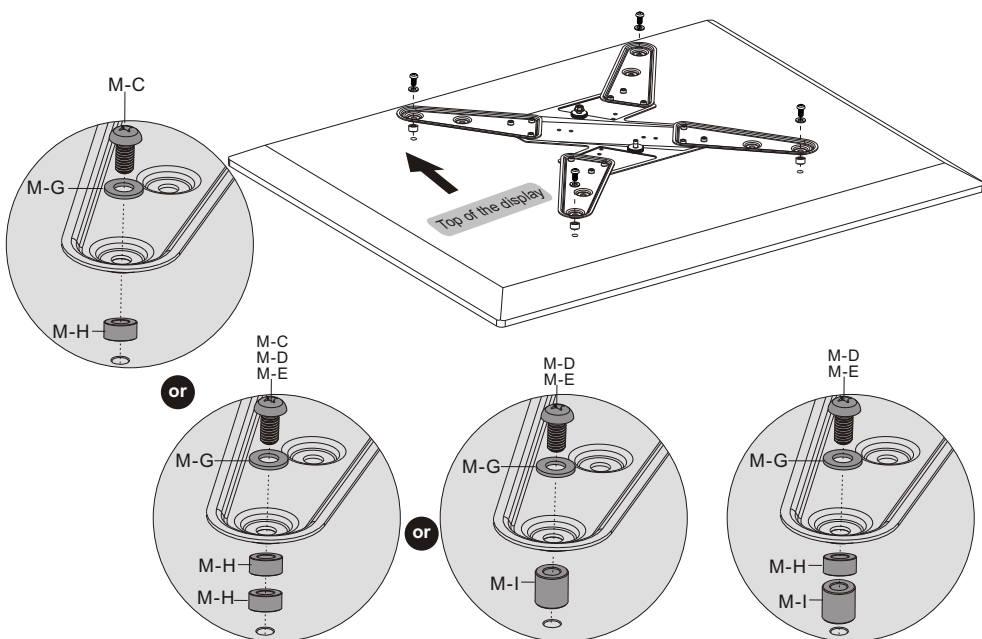


Note: Choose the appropriate screws, washers and spacers (if necessary) according to the type of screen.

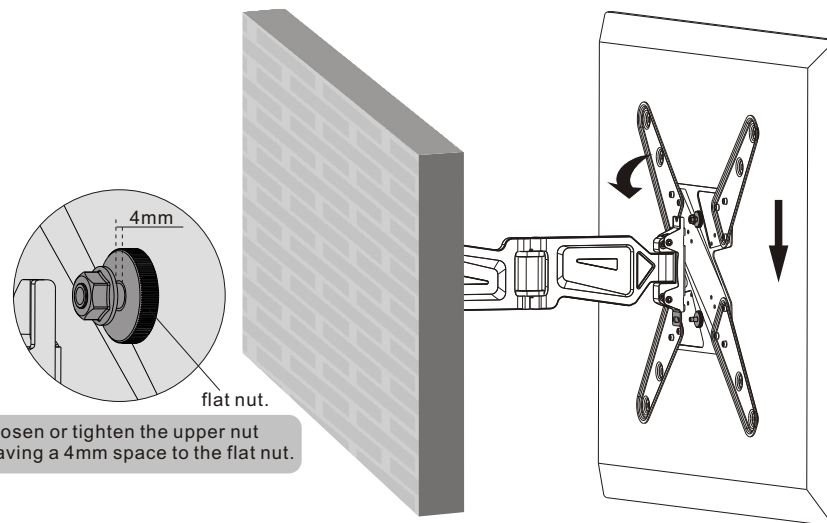
- Position the VESA plate as close as possible to the center of the display.
- Screw the VESA plate onto the display.

⚠ Tighten all screws but do not over tighten.

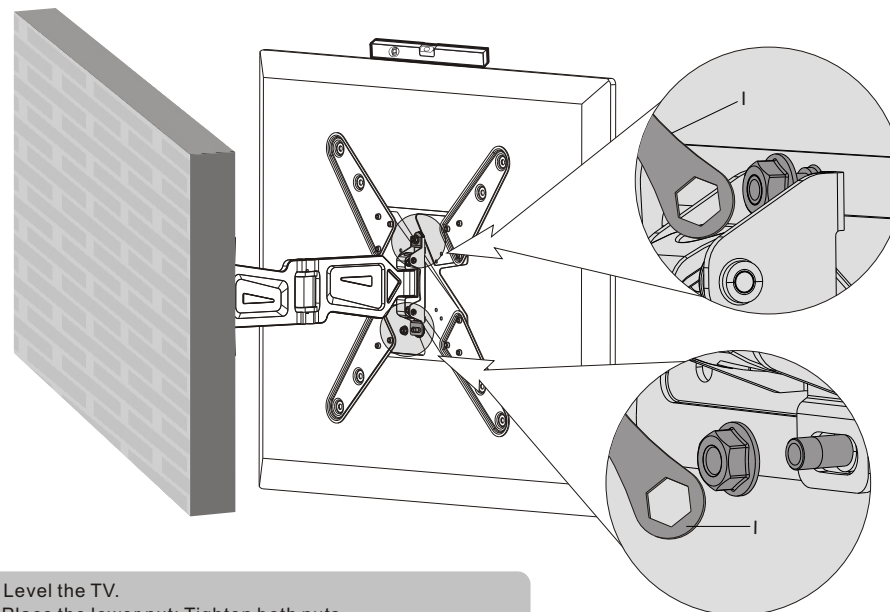
5-2 For Recessed Back Screens



6. Hooking the TV onto the Wall Mount

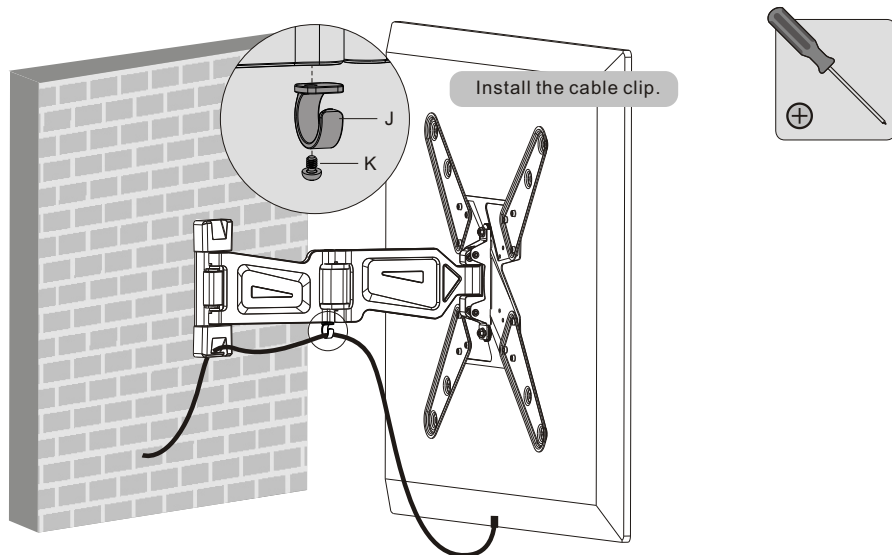


Loosen or tighten the upper nut leaving a 4mm space to the flat nut.



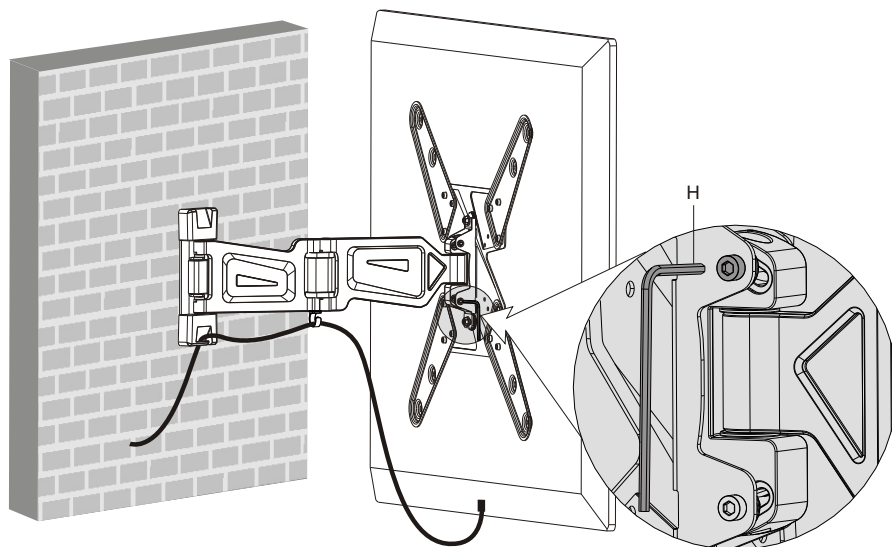
- Level the TV.
- Place the lower nut; Tighten both nuts.

7. Cable Management

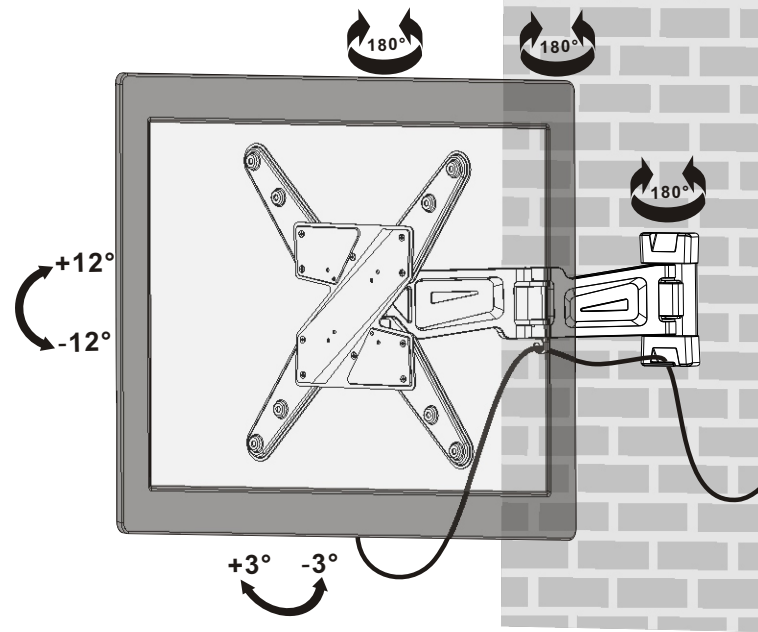


Connect the cables to your TV and route the cables through the cable clip.
Note: Leave slack in the cable for cantilever arm movement.

8. Adjustment



It is necessary to slightly loosen or tighten the adjustment screws using an Allen key according to the weight of TV installed.



Adjust to the desired position or tilt.

Maintenance

- Check that the bracket is secure and safe to use at regular intervals (at least every three months).
- Please contact your distributor if you have any questions.