

Operating Instructions

Busch-Dimmer®

Dimmer
2200 UJ-212
2210 U



1	Safety.....	3
2	Intended use	3
3	Environment.....	3
4	Technical data.....	4
5	Setup and function	4
	5.1 Features of function and equipment.....	4
	5.2 Possible combinations	4
6	Reduction of the connection load (derating).....	5
7	Installation and electrical connection	6
	7.1 Requirements for the electrician	6
	7.2 Mounting	6
	7.3 Electrical connection	7

1 Safety



Warning

Electric voltage!

Risk of death and fire due to electrical voltage of 230 V.

- Work on the 230V supply system may only be performed by authorised electricians!
- Disconnect the mains power supply prior to installation and/or disassembly!

2 Intended use

The device is to be used exclusively with the components that are supplied and licensed as described in chapter "Setup and function".

3 Environment



Consider the protection of the environment!

Used electric and electronic devices must not be disposed of with domestic waste.

- The device contains valuable raw materials which can be recycled. Therefore, dispose of the device at the appropriate collecting depot.

All packaging materials and devices bear the markings and test seals for proper disposal. Always dispose of the packaging material and electric devices and their components via the authorized collecting depots and disposal companies.

The products meet the legal requirements, in particular the laws governing electronic and electrical devices and the REACH ordinance.

(EU Directive 2002/96/EC WEEE and 2002/95/EC RoHS)



(EU REACH ordinance and law for the implementation of the ordinance (EC) No.1907/2006)


4 Technical data

General	
Nominal voltage	230 V AC ± 10%, 50 Hz
Nominal power	60 ... 400 W / VA
Short-circuit protection	T 1.6 H
Nominal current	1.74 A
Ambient temperature range	0 ...35 °C
Protection type	IP 20

5 Setup and function

The device is intended for the activation of the following types of loads:

 230 V	230 V incandescent lamps
 230 V	230 V halogen lamps



5.1 Features of function and equipment

- Complete device
- With rotary actuation and phase section
- Non-illuminable

5.2 Possible combinations

	 2200 UJ-212 2210 U
 2110 C212	X

6 Reduction of the connection load (derating)

The dimmer heats up during operation because part of the connected load is lost and converted into heat. The specified rated power is designed for dimmer installation in a solid masonry wall.

When installing the dimmer in a wall made of gas concrete, wood, or plasterboard, the maximum connection load must be reduced by 20%.

The connected load must always be reduced when several dimmers are installed one below the other or when other heat sources cause additional heating. In intensely heated-up rooms, the maximum connected load must be reduced according to the diagram.

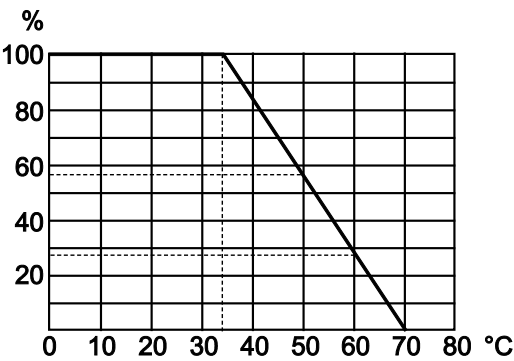


Fig. 1: Derating

Unit	Meaning
%	Nominal power
°C	Ambient temperature

7 Installation and electrical connection



Warning

Electric voltage!

Risk of death due to electrical voltage of 230 V during short-circuit in the low-voltage line.

- Low-voltage and 230 V lines must not be installed together in a flush-mounted socket!

7.1 Requirements for the electrician



Warning

Electric voltage!

Install the device only if you have the necessary electrical engineering knowledge and experience.

- Incorrect installation endangers your life and that of the user of the electrical system.
- Incorrect installation can cause serious damage to property, e.g. due to fire.

The minimum necessary expert knowledge and requirements for the installation are as follows:

- Apply the "five safety rules" (DIN VDE 0105, EN 50110):
 1. Disconnect from power;
 2. Secure against being re-connected;
 3. Ensure there is no voltage;
 4. Connect to earth and short-circuit;
 5. Cover or barricade adjacent live parts.
- Use suitable personal protective clothing.
- Use only suitable tools and measuring devices.
- Check the supply network type (TN system, IT system, TT system) to secure the following power supply conditions (classic connection to ground, protective earthing, necessary additional measures, etc.).

7.2 Mounting



Warning

Electric voltage!

Risk of death and fire due to electrical voltage of 230 V.

- Work on the 230V supply system may only be performed by authorised electricians!
- Disconnect the mains power supply prior to installation and/or disassembly!

The flush-mounted insert must only be installed in flush-mounted wall boxes according to DIN 49073-1, Part 1, or suitable surface-mounted housings.

7.3 Electrical connection



Note on adapting the connected load to the ambient temperature

In intensely heated rooms, the maximum connected load must be reduced according to the following derating diagram.

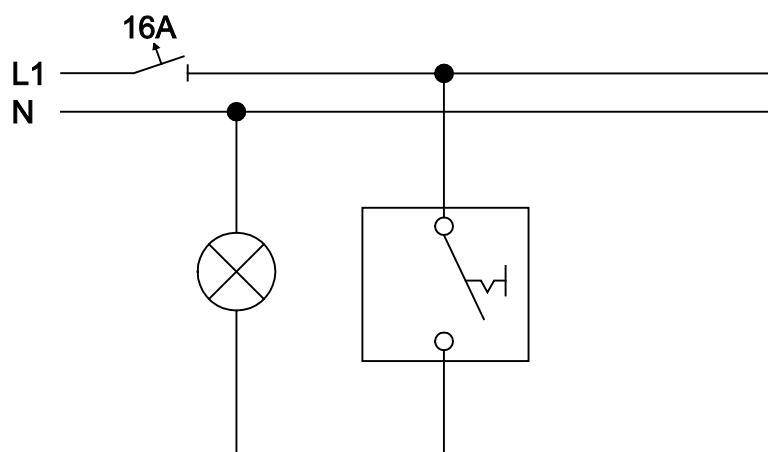


Fig. 2: Deactivation

A member of the ABB Group

Busch-Jaeger Elektro GmbH

PO box
58505 Lüdenscheid

Freisenbergstraße 2
58513 Lüdenscheid
Germany

www.BUSCH-JAEGER.com

info.bje@de.abb.com

Central sales service:

Phone: +49 (0) 2351 956-1600

Fax: +49 (0) 2351 956-1700

Notice

We reserve the right to at all times make technical changes as well as changes to the contents of this document without prior notice.

The detailed specifications agreed to at the time of ordering apply to all orders. ABB accepts no responsibility for possible errors or incompleteness in this document.

We reserve all rights to this document and the topics and illustrations contained therein. The document and its contents, or extracts thereof, must not be reproduced, transmitted or reused by third parties without prior written consent by ABB.

Copyright© 2012 Busch-Jaeger Elektro GmbH
All rights reserved